

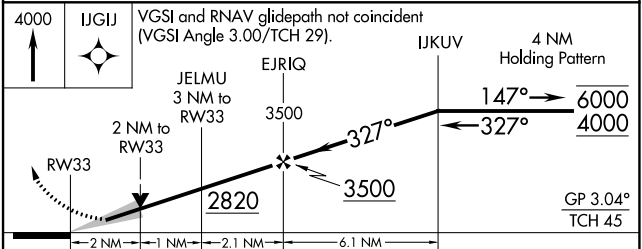
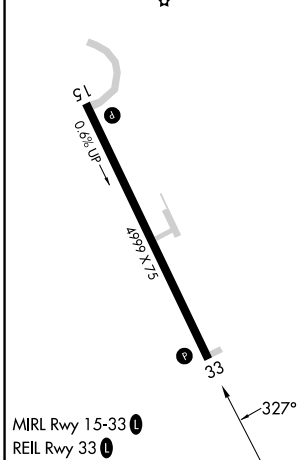
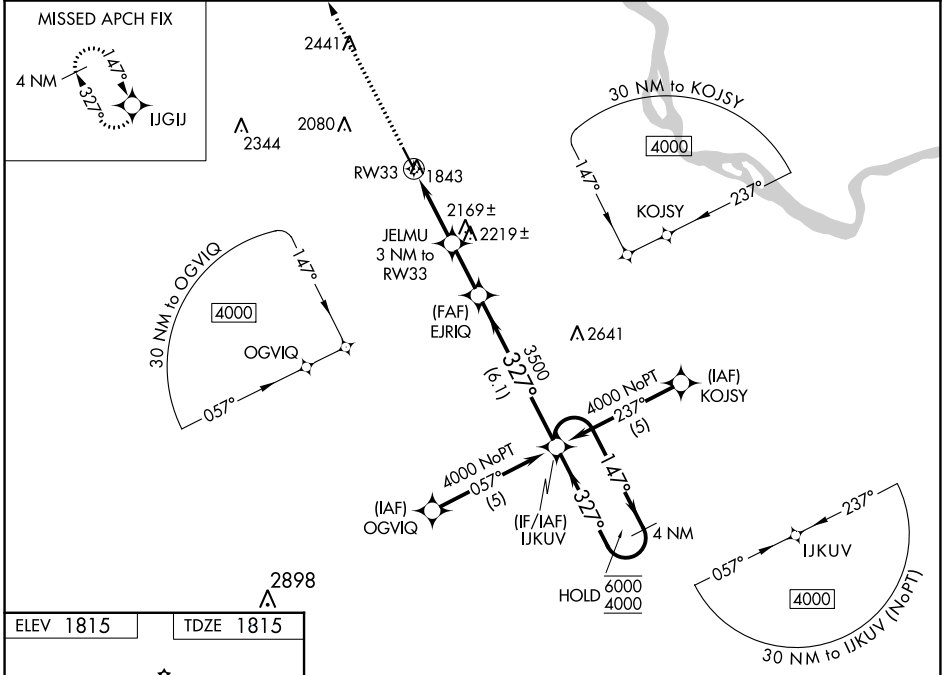
WAAS CH 53318 W33A	APP CRS 327°	Rwy Idg 4999 TDZE 1815 Apt Elev 1815
--	------------------------	---

RNAV (GPS) RWY 33

MERCER COUNTY RGNL (HZE)

RNP APCH - GPS.	MISSED APPROACH: Climb to 4000 direct IJGIJ and hold.
<p>For uncompensated Baro-VNAV systems, LNAV/VNAV NA below -18°C or above 54°C.</p>	

AWOS-3PT 118.675	MINNEAPOLIS CENTER 124.25 236.825	UNICOM 122.8 (CTAF)
----------------------------	---	-------------------------------



CATEGORY	A	B	C	D
LPV DA	2193-1 378 (400-1)			NA
LNAV/VNAV DA	2353-1½ 538 (600-1½)			NA
LNAV MDA	2480-1	665 (700-1)	2480-1⅞ 665 (700-1⅞)	NA
CIRCLING	2480-1	665 (700-1)	2480-1⅞ 665 (700-1⅞)	NA

NC-1, 26 DEC 2024 to 23 JAN 2025

NC-1, 26 DEC 2024 to 23 JAN 2025