

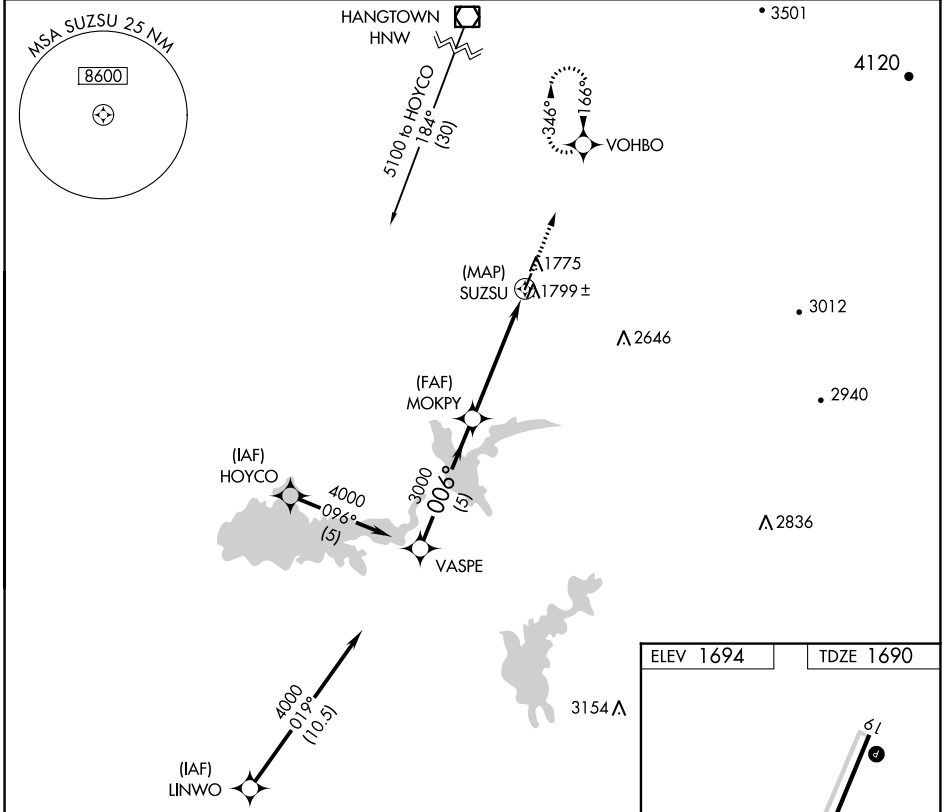
APP CRS	Rwy Idg	<b>3401</b>
<b>006°</b>	TDZE	<b>1690</b>
	Apt Elev	<b>1694</b>

# GPS RWY 1

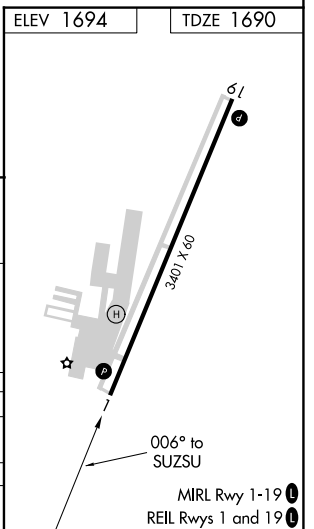
WESTOVER FLD AMADOR COUNTY (JAQ)

<p><b>▽</b> When local altimeter setting not received, use Sacramento Exec altimeter setting.</p> <p><b>△NA</b></p>	<p>MISSED APPROACH: Climb to 4500 on 006° course to VOHBO and hold.</p>
---	---

<p>AWOS-3</p> <p><b>121.125</b></p>	<p>NORCAL APP CON</p> <p><b>125.1 363.2</b></p>	<p>UNICOM</p> <p><b>123.075 (CTAF) 0</b></p>
-------------------------------------	---	--



<p>Procedure Turn NA</p>	<p>VASPE</p> <p>4000</p> <p>006°</p>	<p>MOKPY</p> <p>3000</p>	<p>SUZSU</p> <p>4500</p> <p>VOHBO</p> <p>006° crs</p>	
	<p>5 NM</p>		<p>5 NM</p>	
CATEGORY	A	B	C	D
S-1	2060-1	370 (400-1)	NA	NA
SACRAMENTO EXEC ALTIMETER SETTING MINIMUMS				
S-1	2380-1	690 (700-1)	NA	NA



SW-2, 26 DEC 2024 to 23 JAN 2025

SW-2, 26 DEC 2024 to 23 JAN 2025