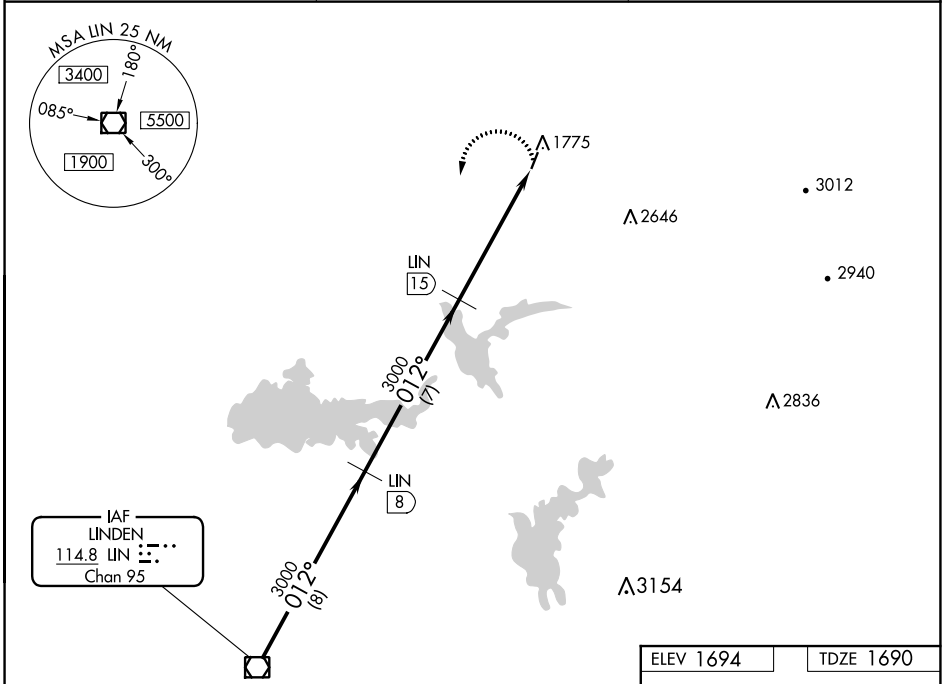


VOR/DME LIN <b>114.8</b> Chan <b>95</b>	APP CRS <b>012°</b>	Rwy Idg <b>3401</b> TDZE <b>1690</b> Apt Elev <b>1694</b>
---	------------------------	---

**VOR/DME RWY 1**  
WESTOVER FLD AMADOR COUNTY (JAQ)

**NA** If local altimeter not received, use Sacramento Exec altimeter setting. Circling Rwy 19 NA at night. **MISSED APPROACH:** Climbing left turn to 3000 via LIN R-012 to LIN VOR/DME.

AWOS-3 <b>121.125</b>	NORCAL APP CON <b>125.1 363.2</b>	UNICOM <b>123.075 (CTAF) 0</b>
--------------------------	--------------------------------------	-----------------------------------



SW-2, 26 DEC 2024 to 23 JAN 2025

SW-2, 26 DEC 2024 to 23 JAN 2025

	LIN VOR/DME		LIN 8		LIN 15		3000 LIN R-012	
	3000		3000		3000		LIN 20.4	
Procedure Turn NA	8 NM		7 NM		5.4 NM			
CATEGORY	A		B		C		D	
S-1	2080-1 390 (400-1)		2080-1¼ 390 (400-1¼)				NA	
CIRCLING	2200-1 506 (600-1)		2200-1¼ 506 (600-1¼)				NA	
SACRAMENTO EXEC ALTIMETER SETTING MINIMUMS								
S-1	2380-1 690 (700-1)		2380-1¼ 690 (700-1¼)				NA	
CIRCLING	2520-1 826 (900-1)		2520-1¼ 826 (900-1¼)				NA	

