

WAAS CH <b>73023</b> <b>W26A</b>	APP CRS <b>261°</b>	Rwy Idg TDZE Apt Elev	<b>3900</b> <b>860</b> <b>860</b>
--	------------------------	-----------------------------	---

# RNAV (GPS) RWY 26

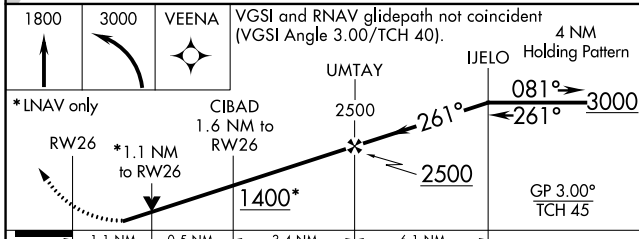
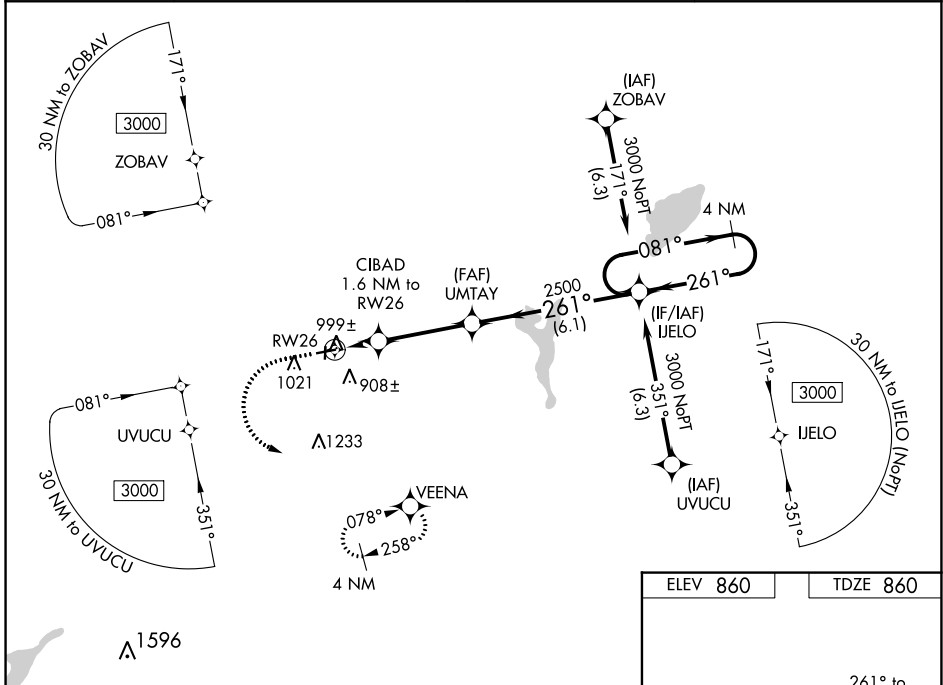
EAST TROY MUNI (57C)

**RNP APCH.**

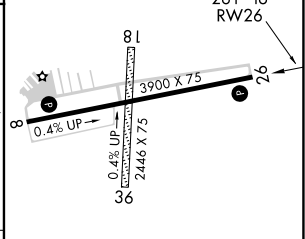
▼ For uncompensated Baro-VNAV systems, LNAV/VNAV NA below -16°C (4°F) or above 54°C (130°F). Obtain local altimeter setting on CTAF; when not received, use General Mitchell Intl altimeter setting and increase all DA 72 feet and all MDA 80 feet, increase LNAV/VNAV visibility all Cats ¼ mile. Rwy 26 helicopter visibility reduction below ¾ SM NA. Baro-VNAV and VDP NA when using General Mitchell Intl altimeter setting.

**MISSED APPROACH:** Climb to 1800 then climbing left turn to 3000 direct VEENA and hold.

AWOS-3PT <b>118.125</b>	MILWAUKEE APP CON <b>125.35 307.0</b>	GCO <b>121.725</b>	UNICOM <b>123.0 (CTAF) 0</b>
----------------------------	--	-----------------------	---------------------------------



ELEV 860	TDZE 860
----------	----------



CATEGORY	A	B	C	D
LPV DA	1110-1	250 (300-1)		NA
LNAV/VNAV DA	1161-1	301 (400-1)		NA
LNAV MDA	1260-1	400 (500-1)		NA

MIRL Rwy 8-26 0  
REIL Rws 8 and 26 0

EC-3, 26 DEC 2024 to 23 JAN 2025

EC-3, 26 DEC 2024 to 23 JAN 2025