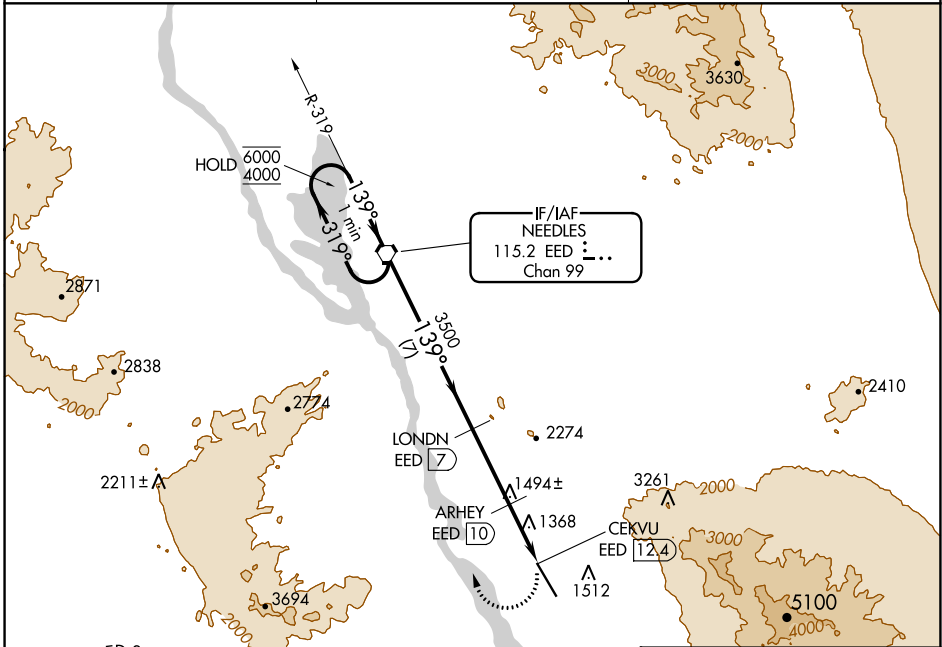


VORTAC EED 115.2 Chan 99	APP CRS 139°	Rwy Idg TDZE Apt Elev	N/A N/A 783
--	------------------------	-----------------------------	--

VOR-A
LAKE HAVASU CITY (HII)

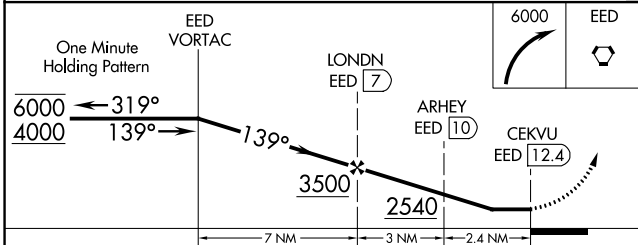
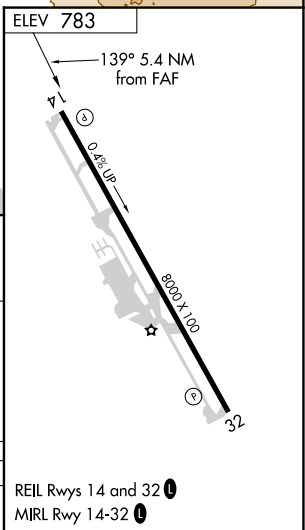
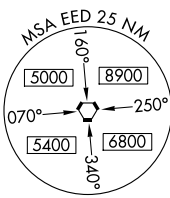
DME required.	MISSED APPROACH: Climbing right turn to 6000 direct EED VORTAC and hold, continue climb-in-hold to 6000.
Circling NA northeast of Rwy 14-32.	

AWOS-3 119.025	LOS ANGELES CENTER 134.65 360.65	UNICOM 122.7 (CTAF)
--------------------------	--	-------------------------------



SW-4, 26 DEC 2024 to 23 JAN 2025

SW-4, 26 DEC 2024 to 23 JAN 2025



CATEGORY	A	B	C	D
CIRCLING	1800-1¼ 1017 (1100-1¼)	1800-1½ 1017 (1100-1½)	1800-3 1017 (1100-3)	2180-3 1397 (1400-3)

REIL Rwy 14 and 32
MIRL Rwy 14-32