

|  |                        |   |   |
|--|------------------------|---|---|
| WAAS<br>CH <b>57938</b><br><b>W35A</b> | APP CRS<br><b>346°</b> | Rwy Idg<br>TDZE <b>538</b><br>Apt Elev <b>538</b> | <b>3651</b><br><b>538</b><br><b>538</b> |
|--|------------------------|---|---|

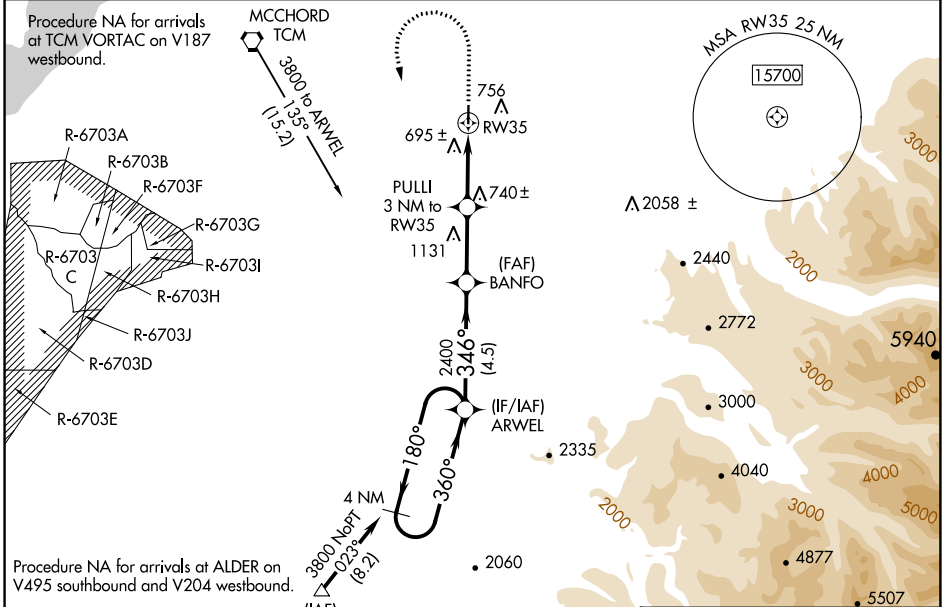
# RNAV (GPS) RWY 35

PIERCE COUNTY/THUN FLD (PLU)

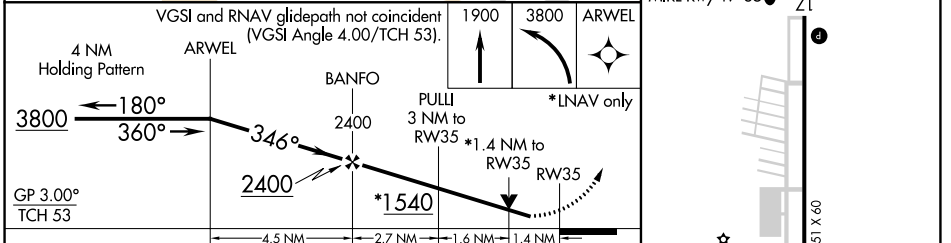
▼ For uncompensated Baro-VNAV systems, LNAV/VNAV NA below -16°C (4°F) or above 54°C (130°F). DME/DME RNP-0.3 NA. Helicopter visibility reduction below ¾ SM NA. Baro-VNAV and VDP NA with McChord Fld altimeter setting. When local altimeter not received, use McChord Fld altimeter setting and increase all DA 49 feet and increase LPV and LNAV/VNAV visibilities ¼ mile; increase all MDA 60 feet.

MISSED APPROACH: Climb to 1900 then climbing left turn to 3800 direct ARWEL and hold.

|                          |  |                           |                               |
|--------------------------|--|---------------------------|-------------------------------|
| AWOS-3<br><b>128.575</b> | SEATTLE APP CON<br><b>126.5 377.15</b> | CLNC DEL<br><b>121.85</b> | UNICOM<br><b>122.7 (CTAF)</b> |
|--------------------------|--|---------------------------|-------------------------------|



|                    |                |
|--------------------|----------------|
| ELEV 538           | TDZE 538       |
| REIL Rwy 17 and 35 | MIRL Rwy 17-35 |



| CATEGORY     | A         | B               | C | D  |
|--------------|-----------|-----------------|---|----|
| LPV DA       | 877-1 1/8 | 339 (400-1 1/8) |   | NA |
| LNAV/VNAV DA | 990-1 1/2 | 452 (500-1 1/2) |   | NA |
| LNAV MDA     | 1000-1    | 462 (500-1)     |   | NA |
| CIRCLING     | 1080-1    | 542 (600-1)     |   | NA |

NW-1, 26 DEC 2024 to 23 JAN 2025

NW-1, 26 DEC 2024 to 23 JAN 2025