

APP CRS **135°**
 Rwy Idg **3901**
 TDZE **265**
 Apt Elev **265**

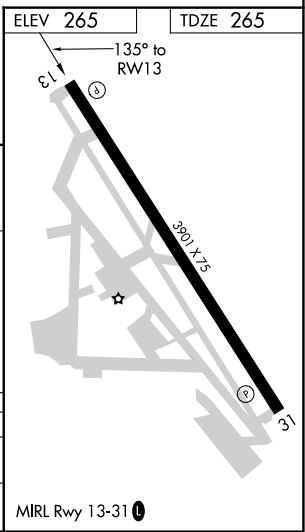
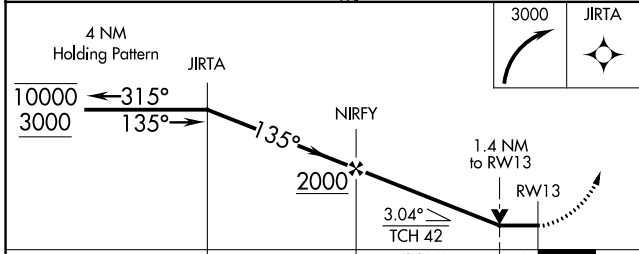
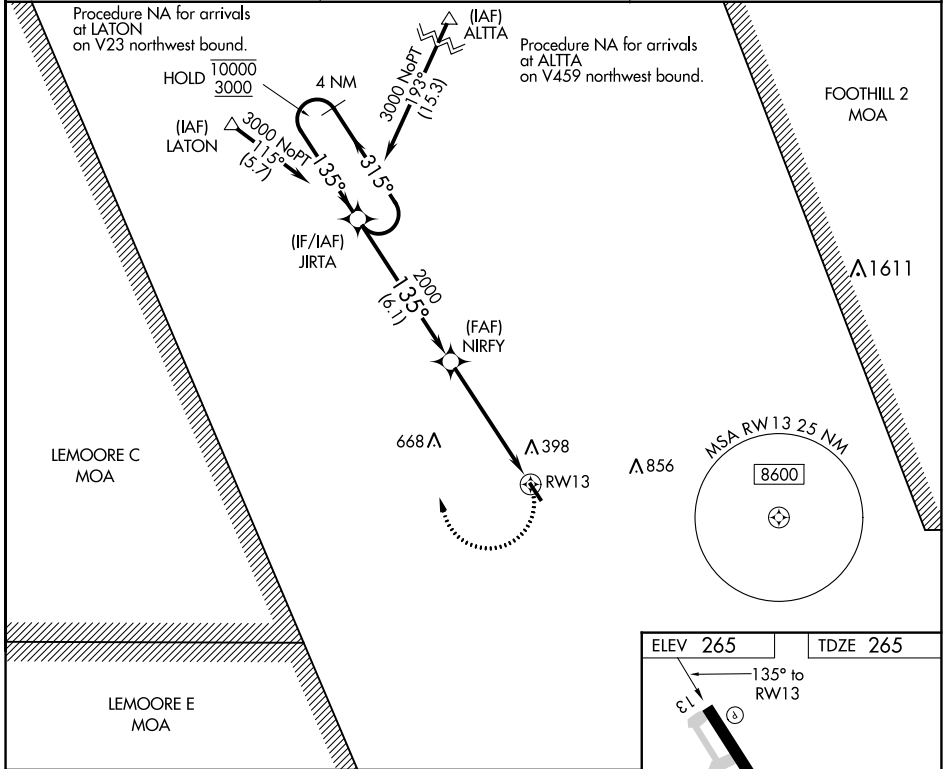
RNAV (GPS) RWY 13

MEFFORD FLD (TLR)

RNP APCH. MISSED APPROACH: Climbing right turn to 3000 direct JIRTA and hold, Continue climb-in-hold to 3000.

⚠️ NA Circling Rwy 31 NA at night. Rwy 13 helicopter visibility reduction below 3/4 SM NA. When local altimeter setting not received, use Visalia altimeter setting and increase all MDA 40 feet.

AWOS-3PT **120.0** FRESNO APP CON **118.5 268.7** UNICOM **122.7 (CTAF)** **0**



CATEGORY	A	B	C	D
LNVA MDA	740-1	475 (500-1)	740-1 3/8 475 (500-1 3/8)	NA
C CIRCLING	760-1	495 (500-1)	760-1 1/2 495 (500-1 1/2)	NA

SW-2, 26 DEC 2024 to 23 JAN 2025

SW-2, 26 DEC 2024 to 23 JAN 2025