

WAAS CH <b>63214</b> <b>W18A</b>	APP CRS <b>175°</b>	Rwy Idg <b>5200</b> TDZE <b>718</b> Apt Elev <b>733</b>
--	------------------------	---

# RNAV (GPS) RWY 18

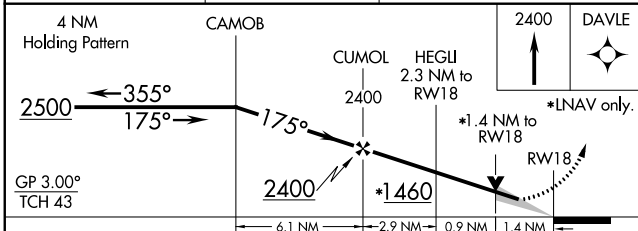
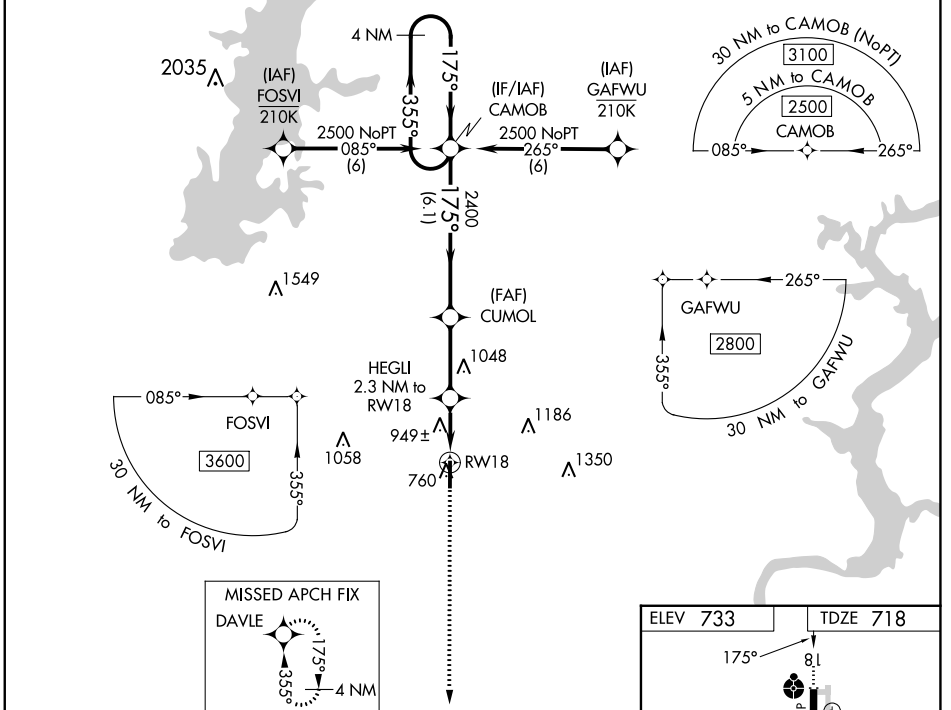
CLAREMORE RGNL (GCM)

For uncompensated Baro-VNAV systems, LNAV/VNAV NA below -16°C (4°F) or above 54°C (130°F). DME/DME RNP-0.3 NA. For inop ALS, increase LNAV/VNAV Cats A/B visibility to 1½ SM.

ODALS

MISSED APPROACH: Climb to 2400 direct DAVLE and hold.

AWOS-3PT <b>119,925</b>	TULSA APP CON <b>119.1 360,825</b>	UNICOM <b>122.7 (CTAF) 0</b>
----------------------------	---------------------------------------	---------------------------------



CATEGORY	A	B	C	D
LPV DA	968-¾	250 (300-¾)		NA
LNAV/VNAV DA	1281-1½	563 (600-1½)		NA
LNAV MDA	1200-¾	482 (500-¾)	1200-1¼ 482 (500-1¼)	NA
CIRCLING	1260-1	527 (600-1)	1380-¾ 647 (700-¾)	NA

ELEV 733 TDZE 718

Vertical profile diagram showing the descent path from 8100 feet to 3600 feet, with a 0.7% descent gradient. Key altitudes include 8100, 718, and 3600. A 7.5 x 0005 MIRA is indicated.

SC-1, 26 DEC 2024 to 23 JAN 2025

SC-1, 26 DEC 2024 to 23 JAN 2025