

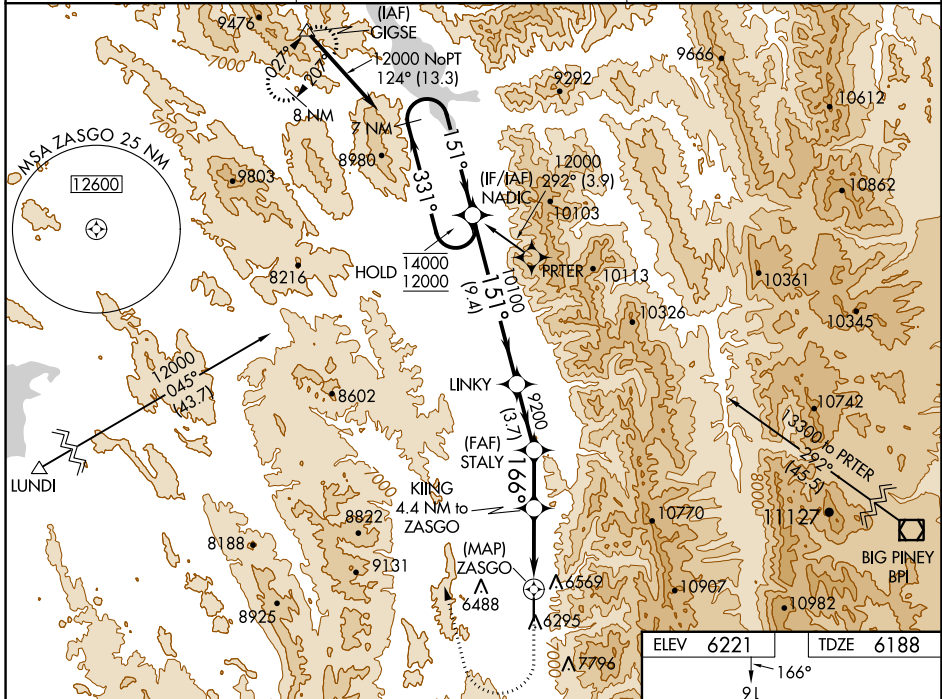
WAAS CH <b>69643</b> W <b>16A</b>	APP CRS <b>166°</b>	Rwy Idg TDZE Apt Elev	<b>7025</b> <b>6188</b> <b>6221</b>
---	------------------------	-----------------------------	---

# RNAV (GPS) RWY 16

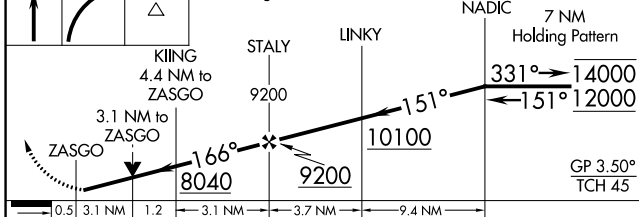
AFTON MUNI (AFO)

RNP APCH - GPS.		MISSED APPROACH: (Do not exceed 210K until GIGSE) Climb to 7400 then climbing right turn to 13300 direct GIGSE and hold.
<p>▼ Rwy 16 helicopter visibility reduction below ¾ SM NA. When Afton altimeter setting not received, procedure NA.</p> <p>⚠ -18°C</p>		<p>#Missed approach requires minimum climb of 420 feet per NM to 9000.</p> <p>*Missed approach requires minimum climb of 400 feet per NM to 9000.</p>

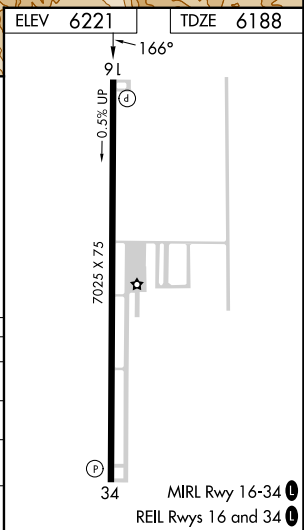
AWOS-3P <b>119.025</b>	SALT LAKE CENTER <b>128.35 239.25</b>	UNICOM <b>122.8 (CTAF)</b>
---------------------------	--	-------------------------------



7400 13300 GIGSE VGSI and RNAV glidepath not coincident (VGSI Angle 3.50/TCH 52).



CATEGORY	A	B	C	D
LPV DA*	6485-1 297 (300-1)			NA
LPV DA	7110-2½ 922 (900-2½)			NA
LNAV MDA#	7600-1¼ 1412 (1400-1¼)	7600-1½ 1412 (1400-1½)	7600-3 1412 (1400-3)	NA
LNAV MDA	7800-1¼ 1612 (1600-1¼)	7800-1½ 1612 (1600-1½)	7800-3 1612 (1600-3)	NA



NW-1, 26 DEC 2024 to 23 JAN 2025

NW-1, 26 DEC 2024 to 23 JAN 2025