

VORTAC EHF 115.4 Chan 101	APP CRS 319°	Rwy Idg TDZE Apt Elev	4000 377 378
-----------------------------------------------	------------------------	-----------------------------	-----------------------------------------

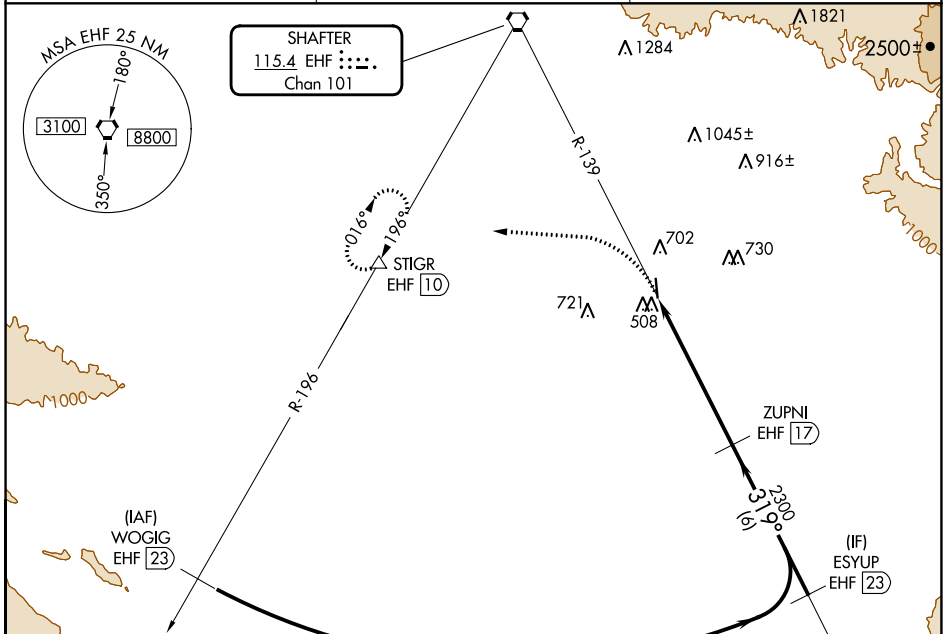
VOR/DME RWY 34

BAKERSFIELD MUNI (L45)

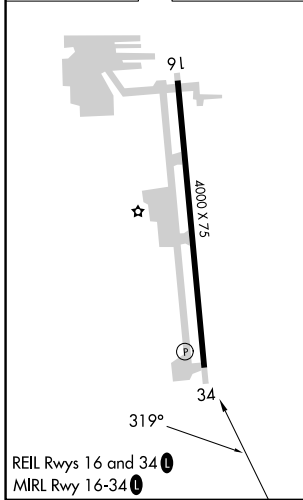
▼ Use Meadows Fld altimeter setting. When Meadows Fld altimeter setting not received, use Porterville altimeter setting and increase all MDA 80 feet, increase S-34 and Circling Cat C and D visibility ¼ mile. Visibility reduction by helicopters below ¼ SM NA. Night Landing Rwy 16 NA.

▲ NA MISSED APPROACH: Climbing left turn to 3000 on heading 260° to EHF R-196 to STIGR/EHF 10 DME and hold, continue climb-in-hold to 3000.

BFL ASOS 118.6	BAKERSFIELD APP CON★ 126.45 270.3	UNICOM 122.8 (CTAF) 0
--------------------------	---------------------------------------------	---------------------------------



ELEV 378	TDZE 377
----------	----------



3000 hdg 260°

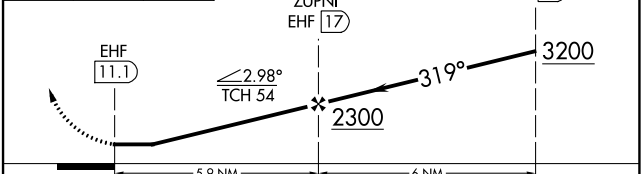
EHF R-196

STIGR

VGSI and descent angles not coincident (VGSI Angle 4.10/TCH 53).

ZUPNI EHF 17

ESYUP EHF 23



CATEGORY	A	B	C	D
S-34	900-1	523 (600-1)	900-1½	523 (600-1½)
C CIRCLING	1060-1	682 (700-1)	1120-2¼ 742 (800-2¼)	1120-2½ 742 (800-2½)

SW-3, 26 DEC 2024 to 23 JAN 2025

SW-3, 26 DEC 2024 to 23 JAN 2025