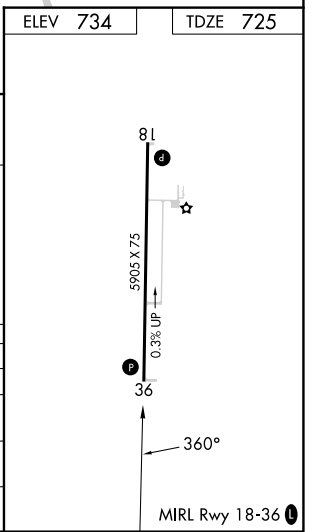
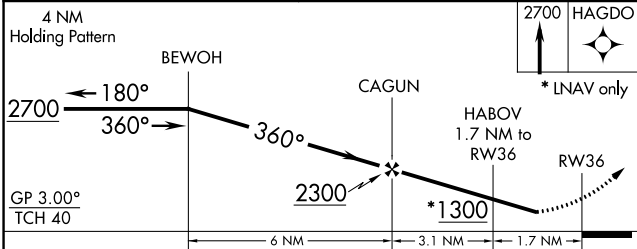
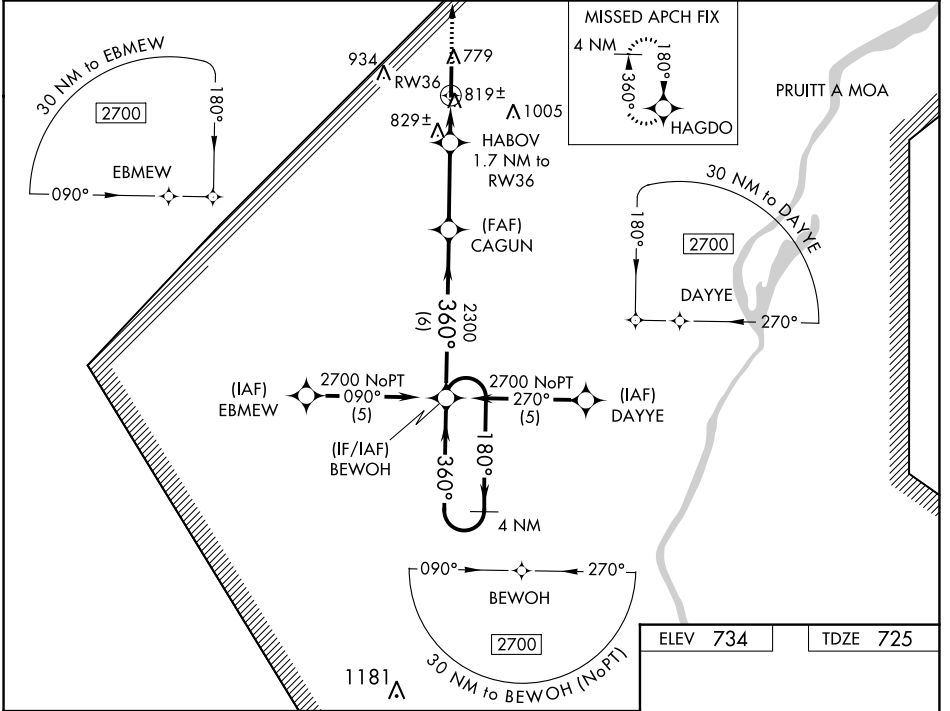


WAAS CH <b>97712</b> <b>W36A</b>	APP CRS <b>360°</b>	Rwy Idg TDZE Apt Elev	<b>5905</b> <b>725</b> <b>734</b>
--	------------------------	-----------------------------	---

# RNAV (GPS) RWY 36

MOUNT STERLING MUNI (I63)

RNP APCH.		MISSED APPROACH: Climb to 2700 direct HAGDO and hold.	
Baro-VNAV NA. Rwy 36 helicopter visibility reduction below ¼ SM NA. When local altimeter setting not received, use Quincy altimeter setting: increase Circling Cat C and D MDA 60 feet and visibility Circling Cat C and D ¼ SM.			
AWOS-3PT <b>118.325</b>	UN ASOS <b>121.425</b>	KANSAS CITY CENTER <b>126.225 317.775</b>	UNICOM <b>122.8 (CTAF) 0</b>



CATEGORY	A	B	C	D
LPV DA		1074-1¼	349 (400-1¼)	
LNAV/VNAV DA		1136-1½	411 (500-1½)	
LNAV MDA	1140-1	415 (500-1)	1140-1¼	415 (500-1¼)
CIRCLING	1200-1	466 (500-1)	1360-1¾ 626 (700-1¾)	1360-2 626 (700-2)

EC-3, 26 DEC 2024 to 23 JAN 2025

EC-3, 26 DEC 2024 to 23 JAN 2025