

LOC/DME I-LHZ <b>109.35</b> Chan 30(Y)	APP CRS <b>046°</b>	Rwy Idg TDZE Apt Elev	<b>5498</b> <b>368</b> <b>368</b>
--	------------------------	-----------------------------	---

# ILS or LOC RWY 5

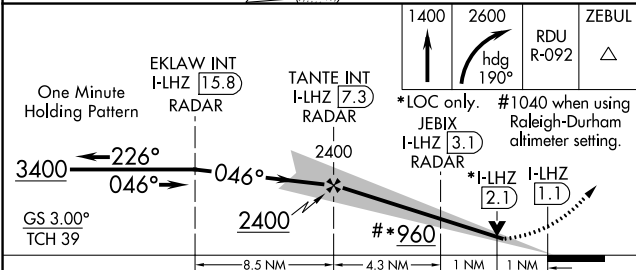
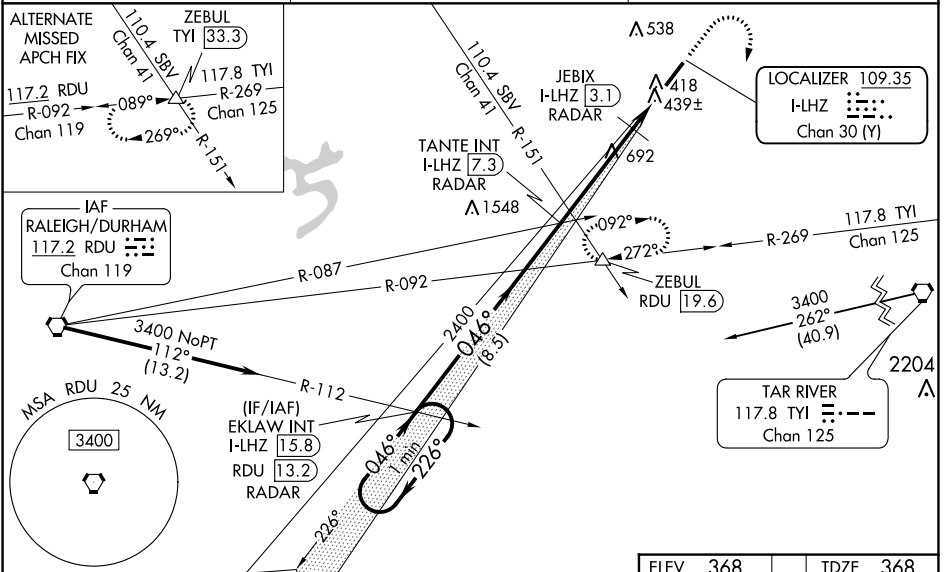
TRIANGLE NORTH EXEC (LHZ)

DME or RADAR required.

**NA** VDP NA when using Raleigh-Durham altimeter setting. When local altimeter setting not received, use Raleigh-Durham altimeter setting and increase ILS DA to 633 feet and all MDAs 80 feet; increase S-LOC and Circling visibility Cats C/D ¼ SM and JEBIX Fix Minimums: Circling visibility Cat C/D ¼ SM. For inop ALS when using Raleigh-Durham altimeter setting, increase S-ILS all Cats visibility to ½ SM, S-LOC Cats C/D visibility to 1½ SM and JEBIX Fix Minimums S-LOC Cats C/D visibility to 1½ SM.

**MALS**  
MISSED APPROACH: Climb to 1400 then climbing right turn to 2600 on heading 190° and on RDU VORTAC R-092 to ZEBUL INT/RDU 19.6 DME and hold.

AWOS-3 <b>118.325</b>	RALEIGH APP CON <b>125.3 353.675</b>	UNICOM <b>123.0 (CTAF)</b>
--------------------------	---	-------------------------------



ELEV 368	TDZE 368
FAF to MAP 6.3 NM	
Knots	60 90 120 150 180
Min:Sec	6:18 4:12 3:09 2:31 2:06

CATEGORY	A	B	C	D
S-ILS 5		568-½	200 (200-½)	
S-LOC 5	960-½	592 (600-½)	960-1¼	592 (600-1¼)
CIRCLING	960-1	592 (600-1)	980-1¾ 612 (700-1¾)	1000-2 632 (700-2)
JEBIX FIX MINIMUMS				
S-LOC 5	700-½	332 (400-½)	700-¾	332 (400-¾)
CIRCLING	800-1 432 (500-1)	840-1 472 (500-1)	980-1¾ 612 (700-1¾)	1000-2 632 (700-2)

SE-2, 26 DEC 2024 to 23 JAN 2025

SE-2, 26 DEC 2024 to 23 JAN 2025