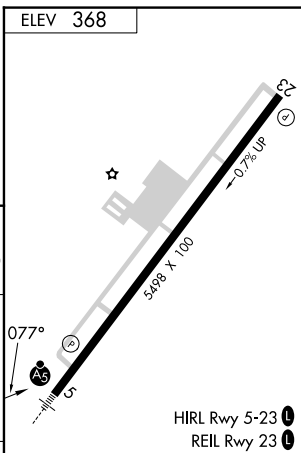
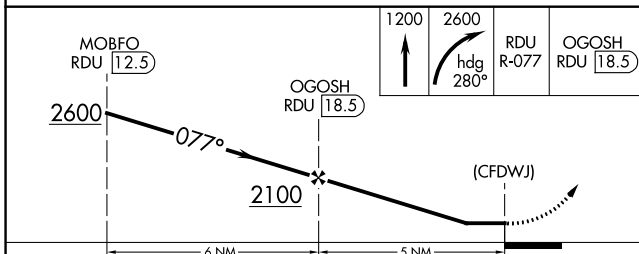
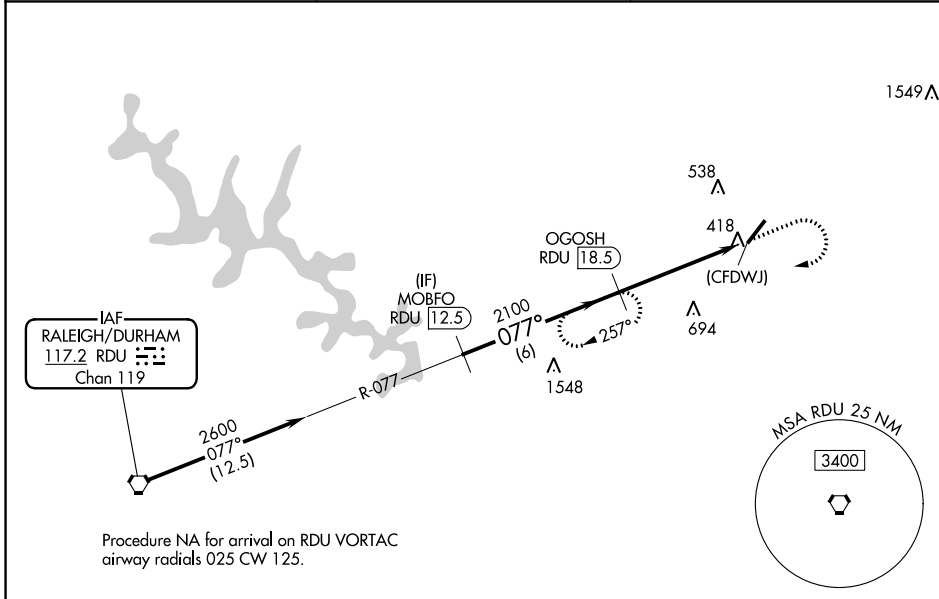


VORTAC RDU <b>117.2</b> Chan <b>119</b>	APP CRS <b>077°</b>	Rwy Idg TDZE Apt Elev <b>N/A</b> <b>N/A</b> <b>368</b>
---	------------------------	---

**VOR-A**  
TRIANGLE NORTH EXEC (L.H.Z)

DME required.	MISSED APPROACH: Climb to 1200 then climbing right turn to 2600 on heading 280° and on RDU VORTAC R-077 to OGOSH/RDU 18.5 DME and hold.
<p>⚠ When local altimeter not received, use Raleigh-Durham Intl altimeter setting and increase all MDA 80 feet and Cats B/C visibility ¼ SM.</p>	

AWOS-3 <b>118.325</b>	RALEIGH APP CON <b>125.3 353.675</b>	UNICOM <b>123.0 (CTAF) 0</b>
--------------------------	---	---------------------------------



CATEGORY	A	B	C	D	FAF to MAP 5 NM						
	1260-1¼ 892 (900-1¼)		1260-2¾ 892 (900-2¾)		1260-3 892 (900-3)	Knots	60	90	120	150	180
CIRCLING						Min:Sec	5:00	3:20	2:30	2:00	1:40

SE-2, 26 DEC 2024 to 23 JAN 2025

SE-2, 26 DEC 2024 to 23 JAN 2025