

APP CRS	Rwy Idg	5000
357°	TDZE	107
	Apt Elev	107

RNAV (GPS) RWY 36

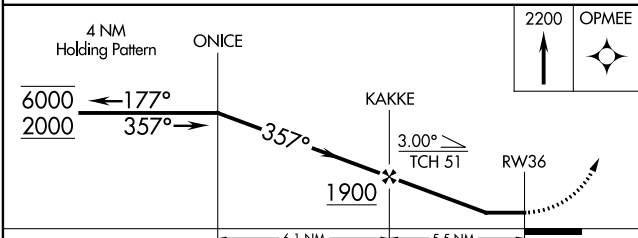
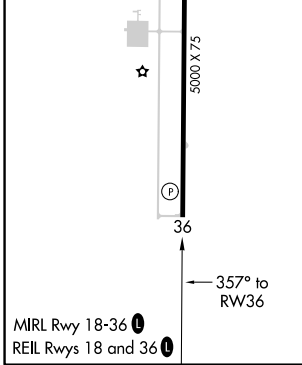
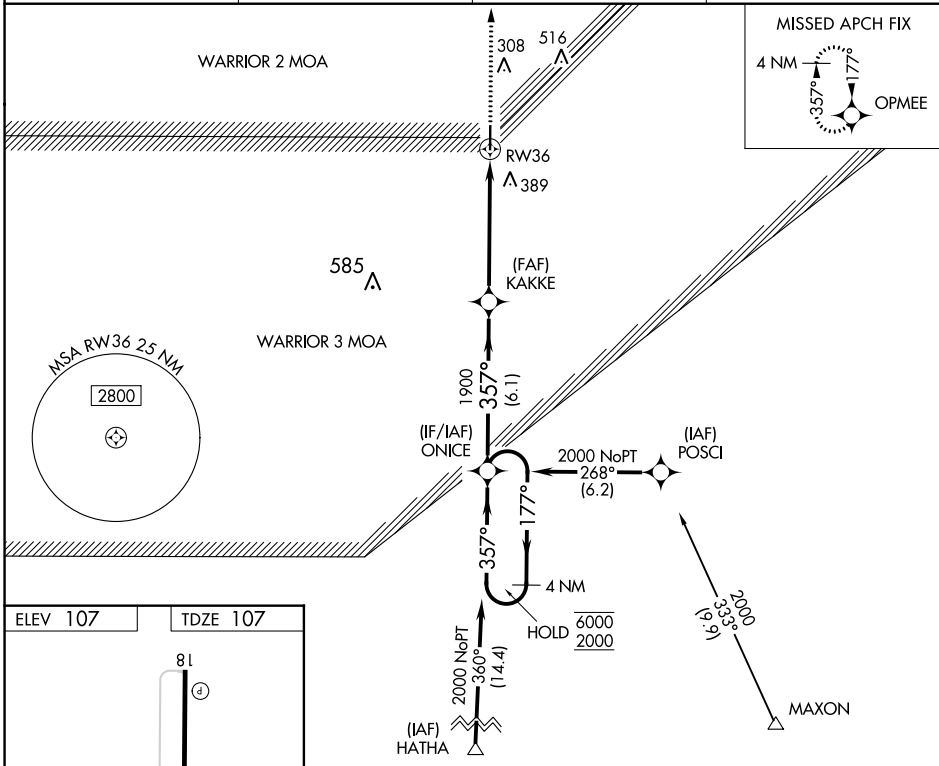
ALLEN PARISH (ACP)

RNP APCH - GPS.

▼ Procedure NA at night. Rwy 36 helicopter visibility reduction below 1 SM NA.
▲ When local altimeter setting not received, use Alexandria Intl altimeter setting: increase all MDAs 100 feet and visibility LNAV Cat C ¼ SM and Circling Cat C ½ SM.

MISSED APPROACH: Climb to 2200 direct OPMEE and hold.

AWOS-3PT 118.275	POLK APP CON 123.7 261.3	GCO 135.075	UNICOM 122.8 (CTAF) ①
----------------------------	------------------------------------	-----------------------	--



CATEGORY	A	B	C	D
LNAV MDA	540-1	433 (500-1)	540-1¼ 433 (500-1¼)	NA
CIRCLING	560-1 453 (500-1)	700-1 593 (600-1)	760-1¾ 653 (700-1¾)	NA

SC-4, 26 DEC 2024 to 23 JAN 2025

SC-4, 26 DEC 2024 to 23 JAN 2025