

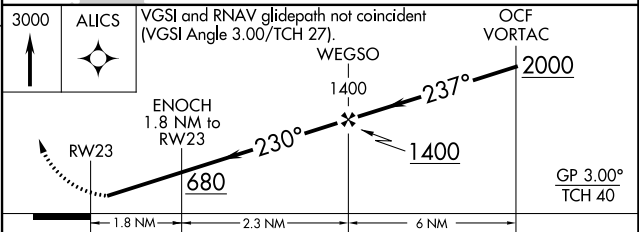
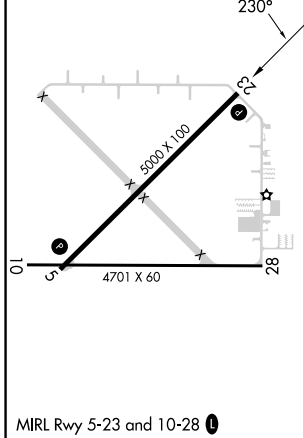
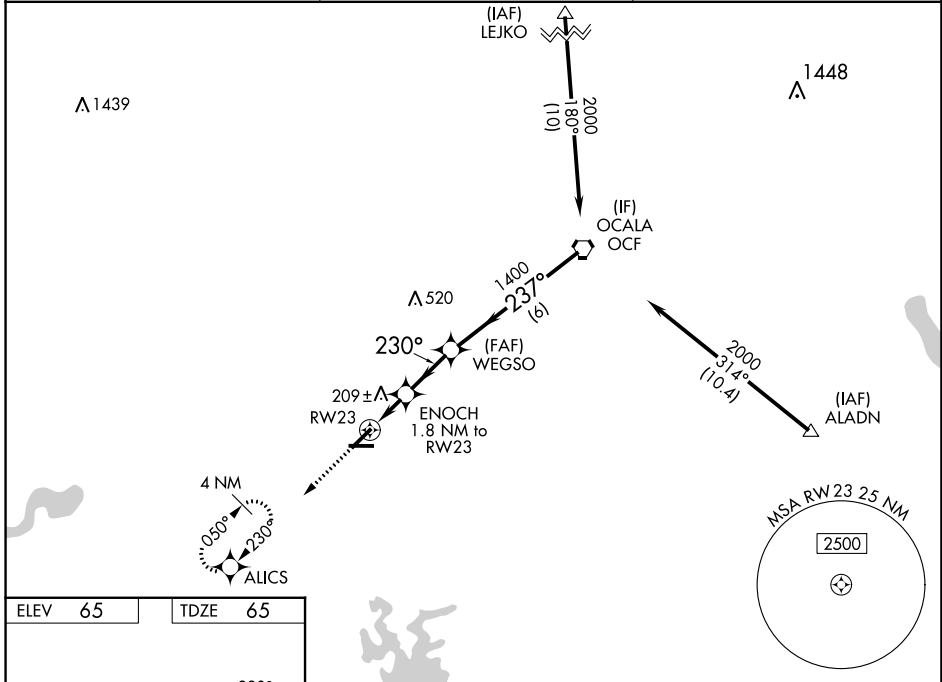
WAAS CH <b>48828</b> <b>W23A</b>	APP CRS <b>230°</b>	Rwy Idg <b>5000</b> TDZE <b>65</b> Apt Elev <b>65</b>
--	------------------------	---

# RNAV (GPS) RWY 23

MARION COUNTY (X35)

RNP APCH - GPS. ▼ ▲ NA Rwy 23 helicopter visibility reduction below ¾ SM NA. Baro-VNAV NA. Use Ocala altimeter setting; when not received, use Leesburg altimeter setting and increase LPV DA to 424 feet; increase LNAV/VNAV DA to 579 feet; increase all MDAs 60 feet and LNAV visibility Cat C/D ½ SM, and Circling visibility Cat D ¼ SM. Circling Rwy 5, 10, 28 NA at night.	MISSED APPROACH: Climb to 3000 direct ALICS and hold, continue climb-in-hold to 3000.
--	---

OCF AWOS-3PT <b>128.125</b>	JACKSONVILLE APP CON <b>118.6 251.15</b>	UNICOM <b>122.8 (CTAF) 0</b>
--------------------------------	---	---------------------------------



CATEGORY	A	B	C	D
LPV DA		374-1	309 (400-1)	
LNAV/VNAV DA		529-1⅜	464 (500-1⅝)	
LNAV MDA	540-1	475 (500-1)	540-1⅜	475 (500-1⅝)
CIRCLING	540-1	475 (500-1)	580-1½ 515 (600-1½)	760-2¼ 695 (700-2¼)

SE-3, 26 DEC 2024 to 23 JAN 2025

SE-3, 26 DEC 2024 to 23 JAN 2025