

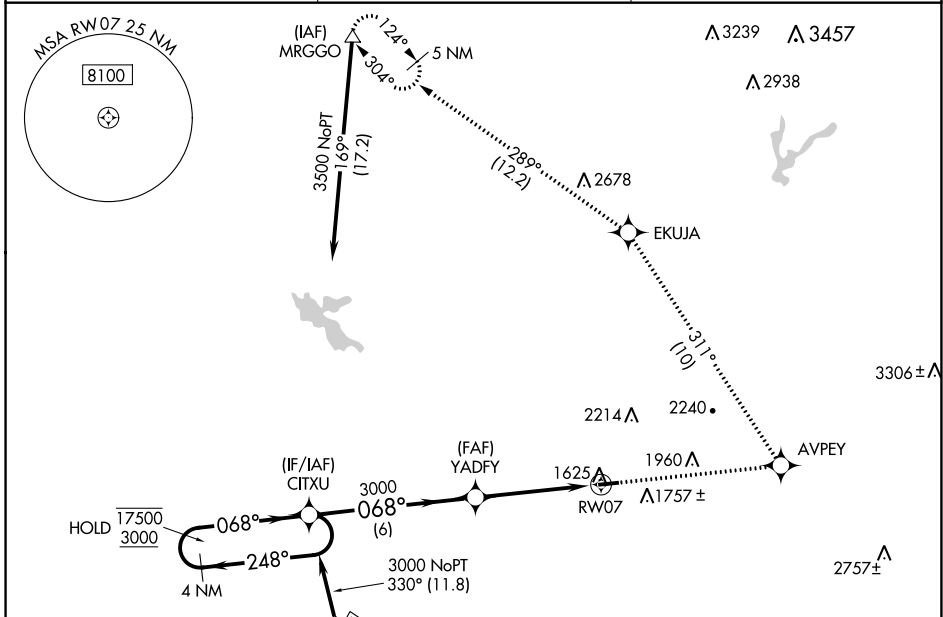
WAAS CH 90515 W07A	APP CRS 068°	Rwy Idg TDZE 1532 Apt Elev 1538	3500
--	------------------------	---	-------------

RNAV (GPS) RWY 7

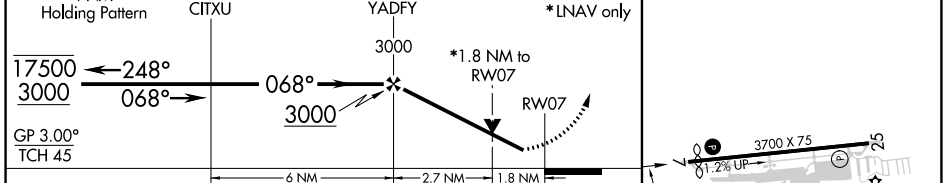
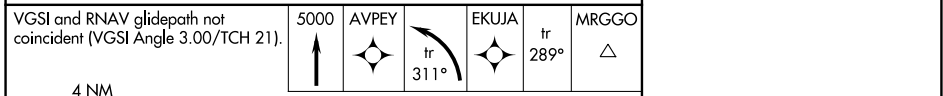
AUBURN MUNI (AUN)

RNP APCH.
 ⚠ Circling Rwy 25 NA at night. Rwy 7 helicopter visibility reduction below 3/4 SM NA. For uncompensated Baro-VNAV systems, LNAV/VNAV NA below -18°C or above 54°C.
 MISSED APPROACH: Climb to 5000 direct AVPEY and left turn on track 311° to EKUJA and on track 289° to MRGGO and hold.

AWOS-3 119.375	NORCAL APP CON 125.4 317.5	UNICOM 122.7 (CTAF) 0
--------------------------	--------------------------------------	---------------------------------



ELEV 1538	TDZE 1532
-----------	-----------



CATEGORY	A	B	C	D
LPV DA	1848-1¼	316 (400-1¼)		NA
LNAV/VNAV DA	1968-1¾	436 (500-1¾)		NA
LNAV MDA	2100-1	568 (600-1)		NA
CIRCLING	2200-1 662 (700-1)	2400-1¼ 862 (900-1¼)		NA

MIRL Rwy 7-25 0

SW-2, 26 DEC 2024 to 23 JAN 2025

SW-2, 26 DEC 2024 to 23 JAN 2025