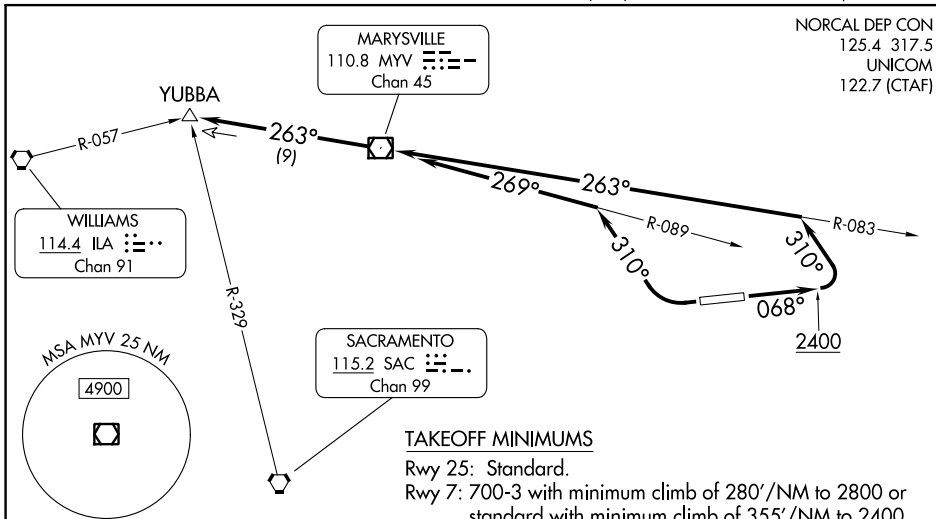


YUBBA ONE DEPARTURE (OBSTACLE)

AL-9143 (FAA)

AUBURN MUNI (AUN)
AUBURN, CALIFORNIA

NORCAL DEP CON
125.4 317.5
UNICOM
122.7 (CTAF)



TAKEOFF OBSTACLE NOTES

Rwy 7: Tree 98' from DER, 447' left of centerline, 1541' MSL. Building, tree beginning 99' from DER, 234' right of centerline, up to 24' AGL/1553' MSL. Tree 959' from DER, 241' right of centerline, 1578' MSL. Tree 992' from DER, 431' right of centerline, 1602' MSL. Trees beginning 1035' from DER, 139' right of centerline, up to 1614' MSL. Trees beginning 1103' from DER, 244' right of centerline, up to 1587' MSL. Trees beginning 1266' from DER, 263' right of centerline, up to 1676' MSL. Pole, electrical system, trees beginning 1366' from DER, 253' right of centerline, up to 60' AGL/1679' MSL. Trees beginning 1514' from DER, 56' right of centerline, up to 1681' MSL. Tree 5369' from DER, 1805' left of centerline, 1684' MSL. Trees beginning 5546' from DER, 1593' left of centerline, up to 1735' MSL. Trees beginning 1 NM from DER, 1140' left of centerline, up to 1779' MSL. Trees beginning 1.1 NM from DER, 983' right of centerline, up to 1726' MSL. Tree, pole beginning 1.3 NM from DER, 1113' right of centerline, up to 1773' MSL. Trees beginning 1.4 NM from DER, 918' left of centerline, up to 1796' MSL. Trees, transmission line, tank, building beginning 1.5 NM from DER, 372' left of centerline, up to 1801' MSL. Trees beginning 1.6 NM from DER, 535' left of centerline, up to 1915' MSL. Tree, traverse way beginning 1.7 NM from DER, 1523' left of centerline, up to 1859' MSL. Electrical system, trees beginning 2.1 NM from DER, 2928' left of centerline, up to 62' AGL/2059' MSL. Tree 2.2 NM from DER, 3991' left of centerline, 2151' MSL. Trees beginning 2.3 NM from DER, 3015' left of centerline, up to 2105' MSL. Tree 2.4 NM from DER, 4231' left of centerline, 1986' MSL.

Rwy 25: Rising terrain 26' from DER, 286' right of centerline, 1496' MSL. Trees beginning 31' from DER, 477' left of centerline, up to 1532' MSL. Tree, rising terrain, fences, vertical structure, building beginning 89' from DER, 199' right of centerline, up to 1529' MSL. Trees beginning 774' from DER, 419' right of centerline, up to 1538' MSL. Tree 1023' from DER, 652' right of centerline, 1539' MSL. Trees beginning 1678' from DER, 207' right of centerline, up to 1547' MSL.

NOTE: Chart not to scale.

DEPARTURE ROUTE DESCRIPTION

TAKEOFF RUNWAY 7: Climb on heading 068° to 2400, then climbing left turn heading 310° to intercept MYV VOR/DME R-083 to MYV VOR/DME and on MYV VOR/DME R-263 to YUBBA INT before proceeding on course.

TAKEOFF RUNWAY 25: Climbing right turn on heading 310° to intercept MYV VOR/DME R-089 to MYV VOR/DME and on MYV VOR/DME R-263 to YUBBA INT before proceeding on course.

VCOA RUNWAY 7: Obtain ATC approval for VCOA when requesting IFR clearance. Climb in visual conditions to cross Auburn Muni Airport at or above 2500 on heading 275° to intercept MYV VOR/DME R-094 to MYV VOR/DME and on MYV VOR/DME R-263 to YUBBA INT before proceeding on course.

YUBBA ONE DEPARTURE (OBSTACLE)

SW-2, 26 DEC 2024 to 23 JAN 2025

SW-2, 26 DEC 2024 to 23 JAN 2025