

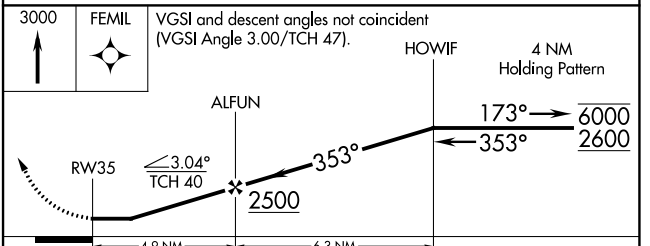
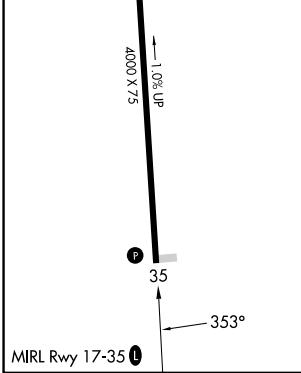
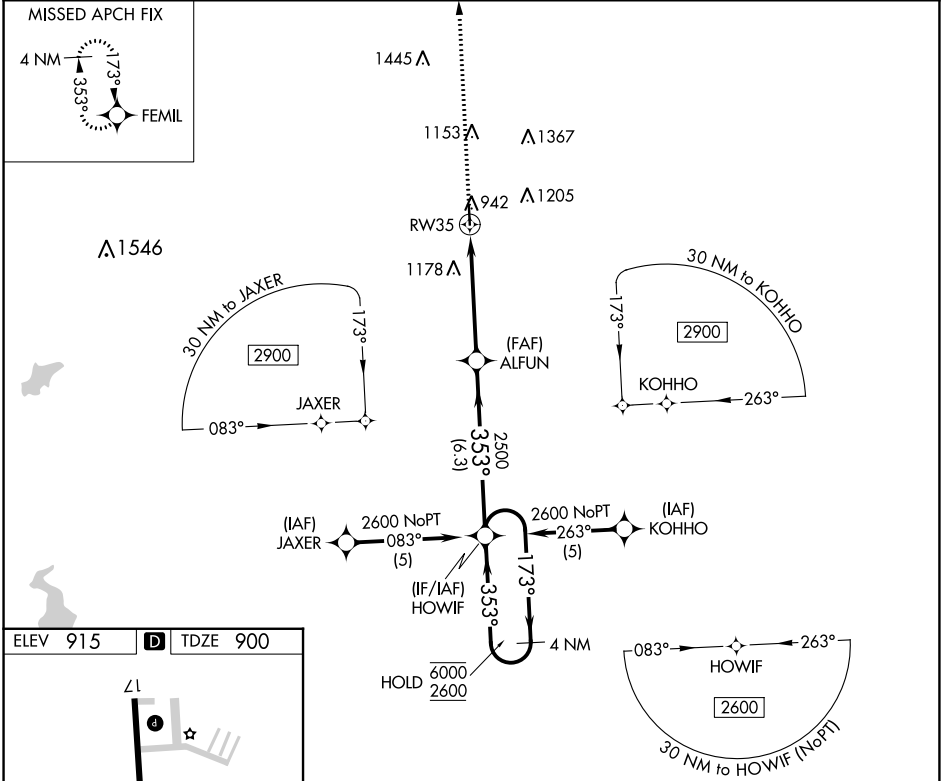
APP CRS	Rwy Idg	<b>4000</b>
<b>353°</b>	TDZE	<b>900</b>
	Apt Elev	<b>915</b>

# RNAV (GPS) RWY 35

LAWRENCE SMITH MEML (L.R.Y)

RNP APCH.	MISSED APPROACH: Climb to 3000 direct FEMIL and hold.
<p>▼ Procedure NA at night.</p> <p>▲ Rwy 35 helicopter visibility reduction below 1 SM NA.</p>	

AWOS-3PT <b>119.975</b>	KANSAS CITY CENTER <b>125.55 327.0</b>	UNICOM <b>123.0</b> (CTAF) <b>0</b>
----------------------------	---	--



CATEGORY	A	B	C	D
LNAV MDA	1380-1	480 (500-1)	1380-1 $\frac{3}{8}$ 480 (500-1 $\frac{3}{8}$ )	NA
CIRCLING	1400-1 485 (500-1)	1460-1 545 (600-1)	1520-1 $\frac{3}{4}$ 605 (700-1 $\frac{3}{4}$ )	NA

NC-3, 26 DEC 2024 to 23 JAN 2025

NC-3, 26 DEC 2024 to 23 JAN 2025