

APP CRS	Rwy Idg	4404
172°	TDZE	3454
	Apt Elev	3454

RNAV (GPS) RWY 17

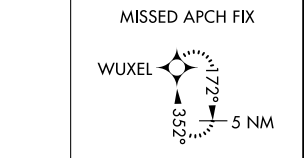
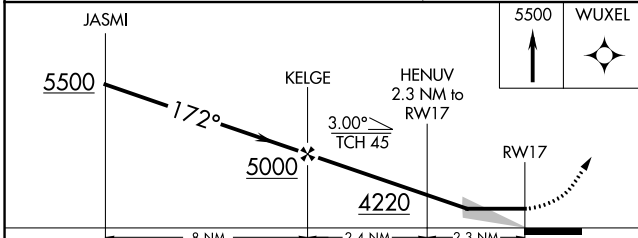
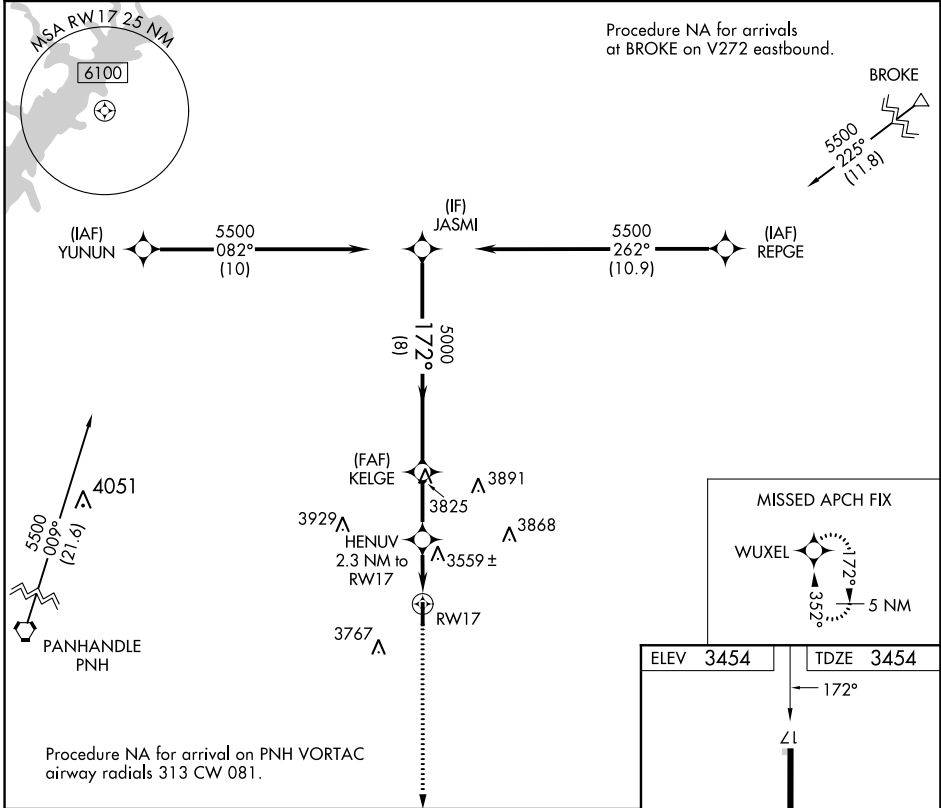
PANHANDLE-CARSON COUNTY (T45)

RNP APCH - GPS.

NA Use Rick Husband Amarillo Intl altimeter setting; when not received, use Borger altimeter setting and increase all MDA 40 feet.

MISSED APPROACH: Climb to 5500 direct WUXEL and hold.

AMA ASOS 118.85 350.3	AMARILLO APP CON* 119.5 307.0	UNICOM 122.7 (CTAF)	123.5 0
---------------------------------	---	-------------------------------	-----------------------



ELEV	3454	TDZE	3454
		172°	
		4404 x 60	
		35	
MIRL Rwy 17-35 0			

CATEGORY	A	B	C	D
LNAV MDA	3900-1	446 (500-1)	3900-1 $\frac{1}{8}$ 446 (500-1 $\frac{1}{8}$)	NA
C CIRCLING	4140-1	686 (700-1)	4140-2 686 (700-2)	NA

SC-2, 26 DEC 2024 to 23 JAN 2025

SC-2, 26 DEC 2024 to 23 JAN 2025