

WAAS CH <b>93723</b> <b>W01A</b>	APP CRS <b>008°</b>	Rwy Idg TDZE Apt Elev	<b>5000</b> <b>436</b> <b>436</b>
--	------------------------	-----------------------------	---

# RNAV (GPS) RWY 1

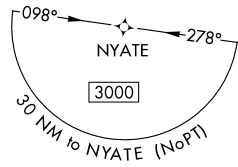
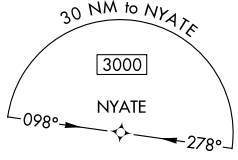
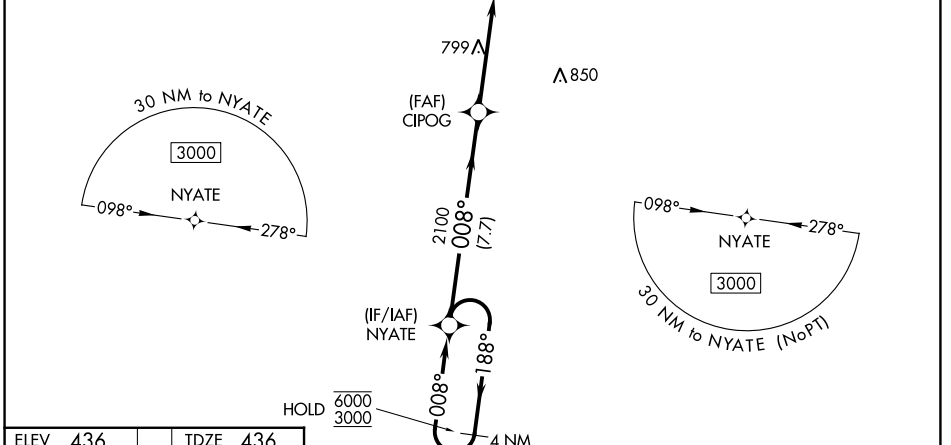
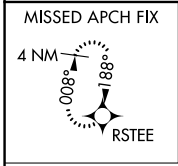
FAYETTE COUNTY (FYE)

RNP APCH - GPS.

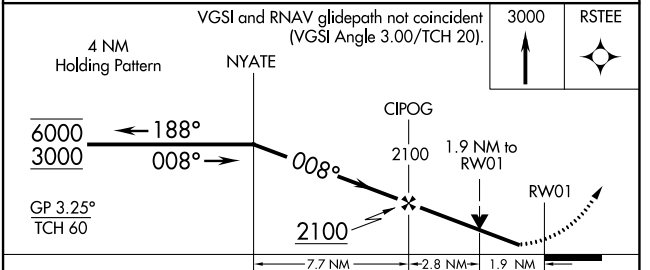
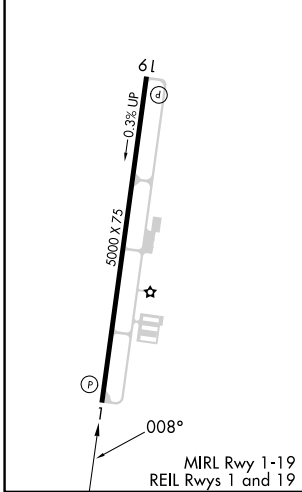
Baro-VNAV and VDP NA when using Memphis Intl altimeter setting. Rwy 1 helicopter visibility reduction below 3/4 SM NA. For uncompensated Baro-VNAV systems, LNAV/VNAV NA below -15°C or above 54°C. When local altimeter setting not received, use Memphis Intl altimeter setting: increase LPV DA to 843 feet and all visibilities 1/8 SM; increase LNAV/VNAV DA to 905 feet and all visibilities 1/4 SM; increase all MDA 100 feet and visibility LNAV Cat C 1/4 SM and Circling Cat C 1/2 SM.

MISSED APPROACH: Climb to 3000 direct RSTEE and hold.

AWOS-3 <b>119.875</b>	MEMPHIS APP CON <b>125.8 338.3</b>	CTAF <b>122.9</b>
--------------------------	---------------------------------------	----------------------



ELEV <b>436</b>	TDZE <b>436</b>
-----------------	-----------------



CATEGORY	A	B	C	D
LPV DA		747-1	311 (400-1)	NA
LNAV/VNAV DA		809-1 1/8	373 (400-1 1/8)	NA
LNAV MDA	1060-1	624 (700-1)	1060-1 3/4 624 (700-1 1/4)	NA
CIRCLING	1060-1	624 (700-1)	1160-2 724 (800-2)	NA

SE-1, 26 DEC 2024 to 23 JAN 2025

SE-1, 26 DEC 2024 to 23 JAN 2025