

| | | |
|---|------------------------|---|
| LOC/DME I-GHO 110.75 Chan 44 (Y) | APP CRS 092° | Rwy Idg 4300 TDZE 22 Apt Elev 22 |
|---|------------------------|---|

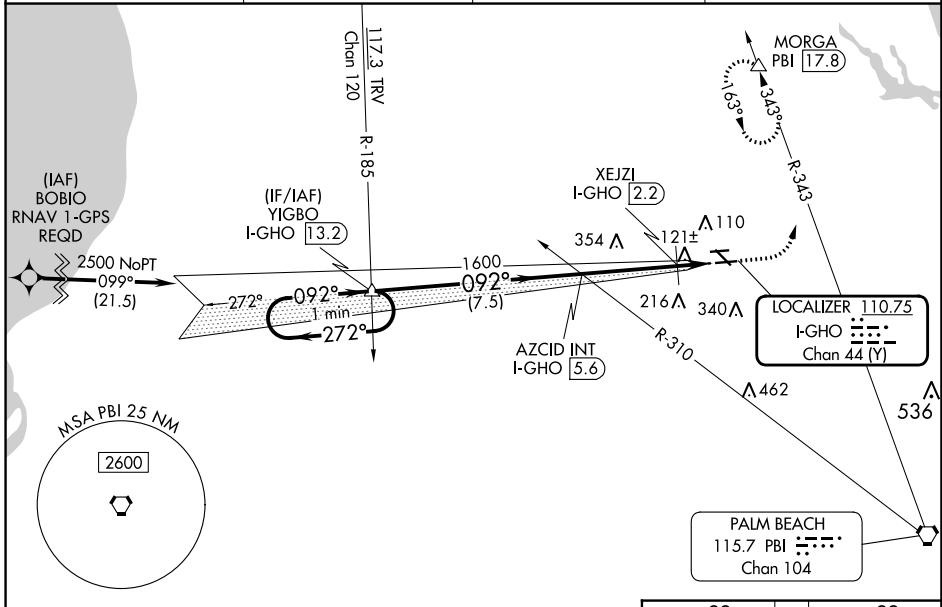
ILS or LOC RWY 9R

NORTH PALM BEACH COUNTY GENERAL AVIATION (F45)

⚠ NA Circling NA to Rwys 9L and 27R. DME required. When local altimeter setting not received, use Palm Beach Intl altimeter setting and increase all DA to 300 and all visibilities 1/8 SM; increase all MDAs 40 feet; increase XEJZI Fix Minimums S-LOC 9R Cats C/D visibility 1/8 SM. Rwy 9R helicopter visibility reduction below 3/4 SM NA.

MISSED APPROACH: Climb to 500 then climbing left turn to 2000 on hdg 033° and on PBI VORTAC R-343 to MORGA PBI 17.8 DME and hold.

| | | | |
|--------------------------|--|----------------------------|---------------------------------|
| AWOS-3 119.975 | PALM BEACH APP CON 128.3 317.4 | CLNC DEL 120.825 | UNICOM 123.075 (CTAF) |
|--------------------------|--|----------------------------|---------------------------------|



SE-3, 26 DEC 2024 to 23 JAN 2025

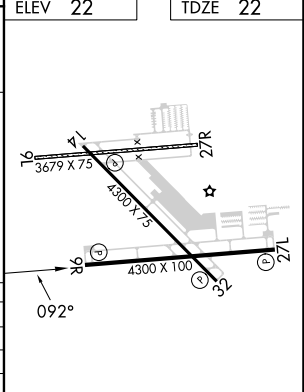
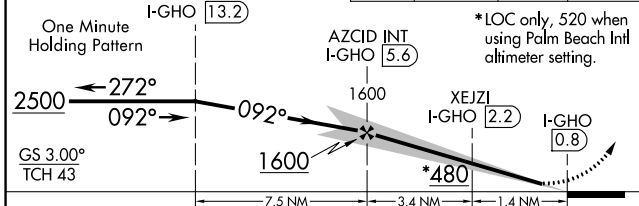
SE-3, 26 DEC 2024 to 23 JAN 2025

VGSI and ILS glidepath not coincident (VGSI Angle 3.00/TCH 40).

ELEV 22 | TDZE 22

500 | 2000 | hdg 033°

PBI R-343 | MORGA



| CATEGORY | A | B | C | D |
|--------------------|----------------------|----------------------|----------------------|------------------------------|
| S-ILS 9R | | 272-3/4 | 250 (300-3/4) | |
| S-LOC 9R | 480-1 | 458 (500-1) | 480-1 3/8 | 458 (500-1 1/8) |
| C CIRCLING | 480-1 | 458 (500-1) | 700-2 678 (700-2) | 720-2 1/4 698 (700-2 1/4) |
| XEJZI FIX MINIMUMS | | | | |
| S-LOC 9R | 420-1 | 398 (400-1) | 420-1 1/8 | 398 (400-1 1/8) |
| C CIRCLING | 460-1 438 (500-1) | 480-1 458 (500-1) | 700-2 678 (700-2) | 720-2 1/4 698 (700-2 1/4) |

MIRL Rwys 9R-27L and 14-32 **Ⓛ**
REIL Rwys 9R, 14, 27L and 32 **Ⓛ**

FAF to MAP 4.8 NM

| | | | | | |
|---------|------|------|------|------|------|
| Knots | 60 | 90 | 120 | 150 | 180 |
| Min:Sec | 4:48 | 3:12 | 2:24 | 1:55 | 1:36 |