

VORTAC CVA <b>113.8</b> Chan <b>85</b>	APP CRS <b>036°</b>	Rwy Idg TDZE Apt Elev	<b>N/A</b> <b>N/A</b> <b>616</b>
--	------------------------	-----------------------------	--

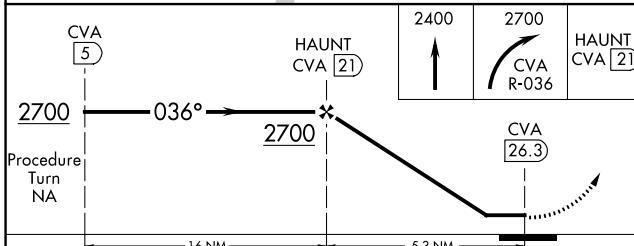
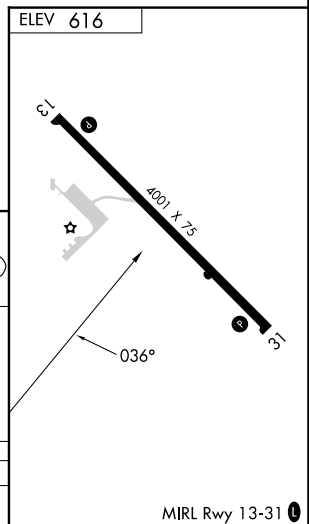
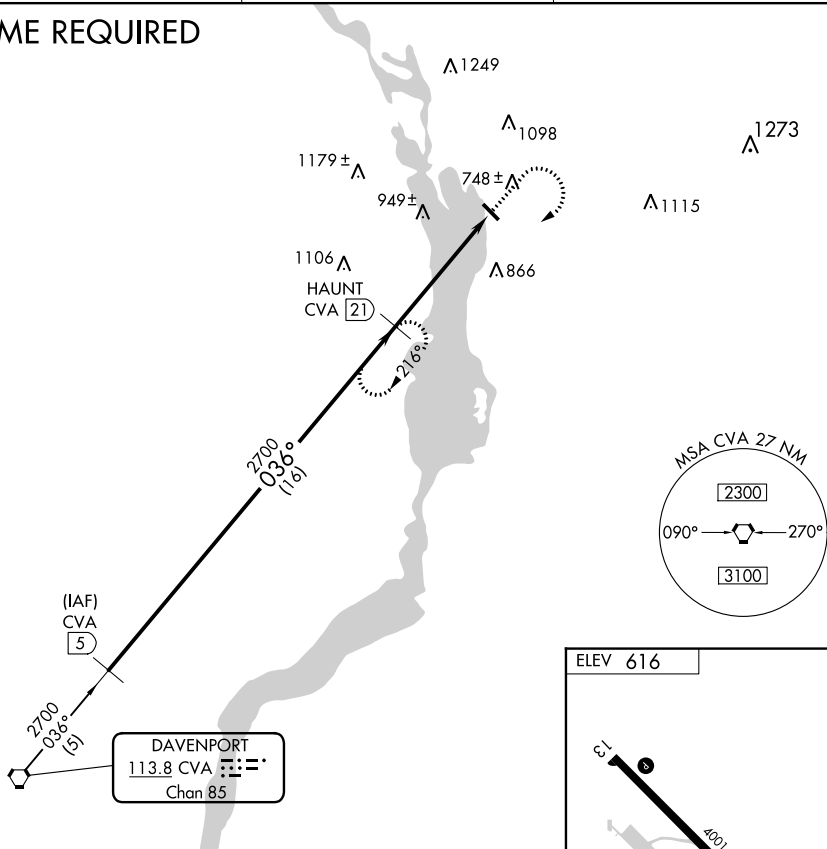
**VOR-A**  
TRI-TOWNSHIP (SFY)

⚠️ **NA** When local altimeter setting not received, use Sterling/Rockfalls alimeter setting and increase all MDA 80 feet. Procedure NA at night. Rwy 13, 31 helicopter visibility reduction below 1 SM NA. DME required.

**MISSED APPROACH:** Climb to 2400 then climbing right turn to 2700 on CVA VORTAC R-036 to HAUNT and hold.

AWOS-3PT <b>118.650</b>	QUAD CITY APP CON* <b>125.95 257.8</b>	UNICOM <b>122.7 (CTAF)</b>
----------------------------	---	-------------------------------

**DME REQUIRED**



CATEGORY	A	B	C	D
CIRCLING	1300-1 684 (700-1)	1300-1¼ 684 (700-1¼)	NA	

EC-3, 26 DEC 2024 to 23 JAN 2025

EC-3, 26 DEC 2024 to 23 JAN 2025