

WAAS CH <b>99608</b> <b>W21A</b>	APP CRS <b>213°</b>	Rwy Idg TDZE Apt Elev	<b>3579</b> <b>1033</b> <b>1033</b>
----------------------------------------	------------------------	-----------------------------	-------------------------------------------

# RNAV (GPS) RWY 21

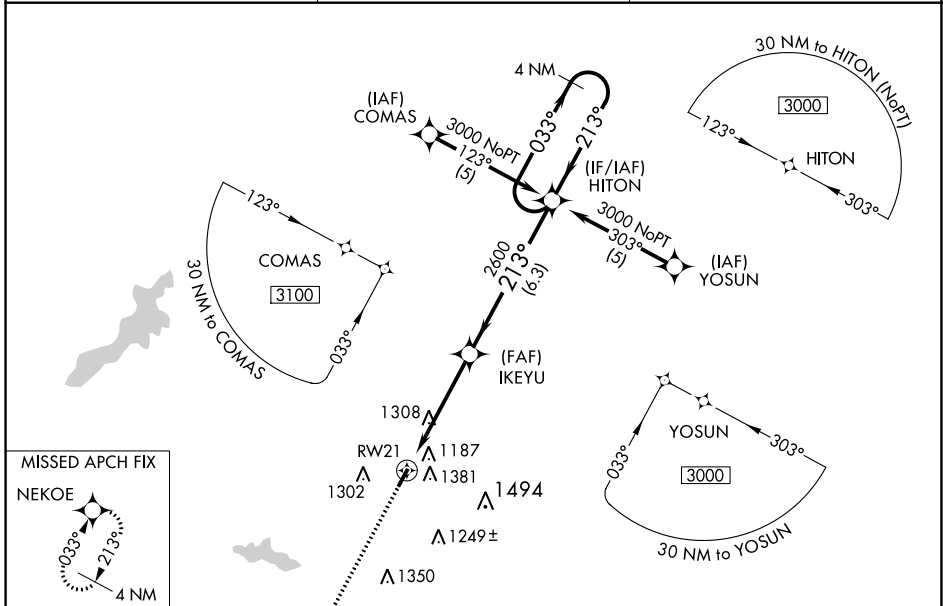
CLINTON FLD (I66)

RNP APCH.

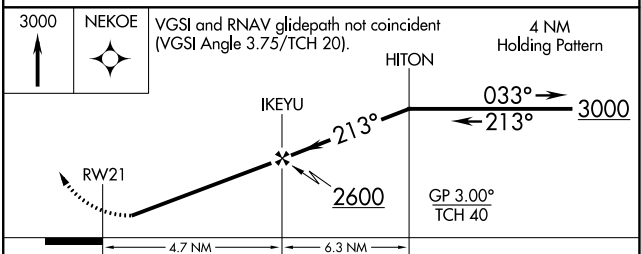
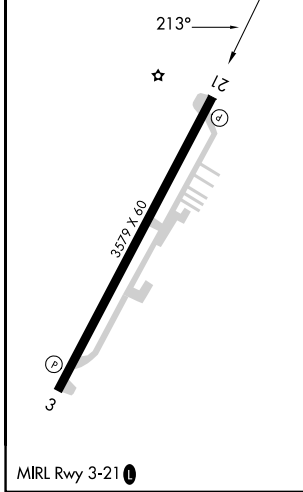
**NA** Baro-VNAV NA when using Wilmington Air Park altimeter setting. For uncompensated Baro-VNAV systems, LNAV/VNAV NA below -17°C or above 54°C. When local altimeter setting not received, use Wilmington Air Park altimeter setting and increase all DA/MDA 20 feet. Rwy 21 helicopter visibility reduction below ¾ SM NA.

MISSED APPROACH:  
Climb to 3000 direct NEKOE and hold.

AWOS-3 <b>124.175</b>	COLUMBUS APP CON <b>118.85 269.275</b>	UNICOM <b>122.725 (CTAF)</b>
--------------------------	-------------------------------------------	---------------------------------



ELEV 1033	TDZE 1033
-----------	-----------



CATEGORY	A	B	C	D
LPV DA	1491-1 ¾	458 (500-1¾)		NA
LNAV/VNAV DA	1589-2	556 (600-2)		NA
LNAV MDA	1640-1	607 (700-1)	1640-1¾ 607 (700-1¾)	NA
CIRCLING	1740-1	707 (800-1)	1740-2 707 (800-2)	NA

EC-2, 26 DEC 2024 to 23 JAN 2025

EC-2, 26 DEC 2024 to 23 JAN 2025