

LOC/DME I-JQF 111.95 Chan 56(Y)	APP CRS 196°	Rwy Idg 6350 TDZE 699 Apt Elev 704
---	------------------------	---

ILS or LOC RWY 20

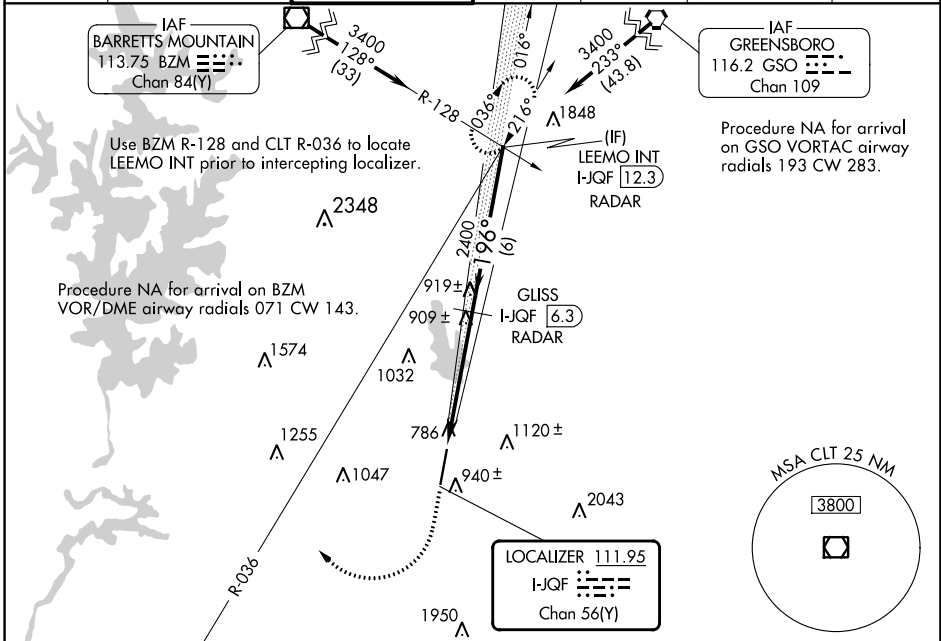
CONCORD-PADGETT RGNL (JQF)

DME or RADAR required for LOC only.

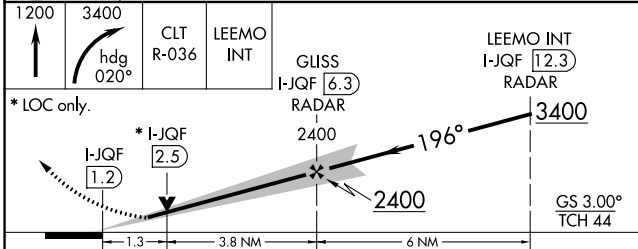
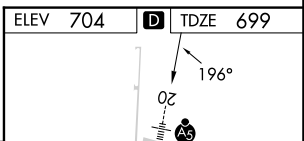
MALS MISSED APPROACH: Climb to 1200 then climbing right turn to 3400 on heading 020° and CLT VOR/DME R-036 to LEEMO INT/I-JQF 12.3 DME/RADAR and hold.

NA For inop ALS, increase S-LOC 20 Cat A/B visibility to 1 SM, Cat C/D visibility to 1 3/4 SM. Rwy 20 helicopter visibility reduction below 3/4 SM NA. S-ILS inop table does not apply.

ATIS* 133.675	CHARLOTTE APP CON 128.325 307.8	CONCORD TOWER* 134.65 (CTAF)	GND CON 121.85	CLNC DEL 118.55	CLNC DEL 127.25 (when twr closed)	UNICOM 122.95
-------------------------	---	--	--------------------------	---------------------------	--	-------------------------



ELEV 704	TDZE 699
----------	----------



CATEGORY	A	B	C	D
S-ILS 20		1026-3/4	327 (400-3/4)	
S-LOC 20	1160-3/4	461 (500-3/4)	1160-1	461 (500-1)
C CIRCLING	1300-1	596 (600-1)	1480-2 1/4 776 (800-2 1/4)	1480-2 1/2 776 (800-2 1/2)

FAF to MAP 5.1 NM					
Knots	60	90	120	150	180
Min:Sec	5:06	3:24	2:33	2:02	1:42

TDZL Rwy 20

REIL Rwy 2

HIRL Rwy 2-20

SE-2, 26 DEC 2024 to 23 JAN 2025

SE-2, 26 DEC 2024 to 23 JAN 2025