

(KER4.KER) 24081
KERMIT FOUR DEPARTURE

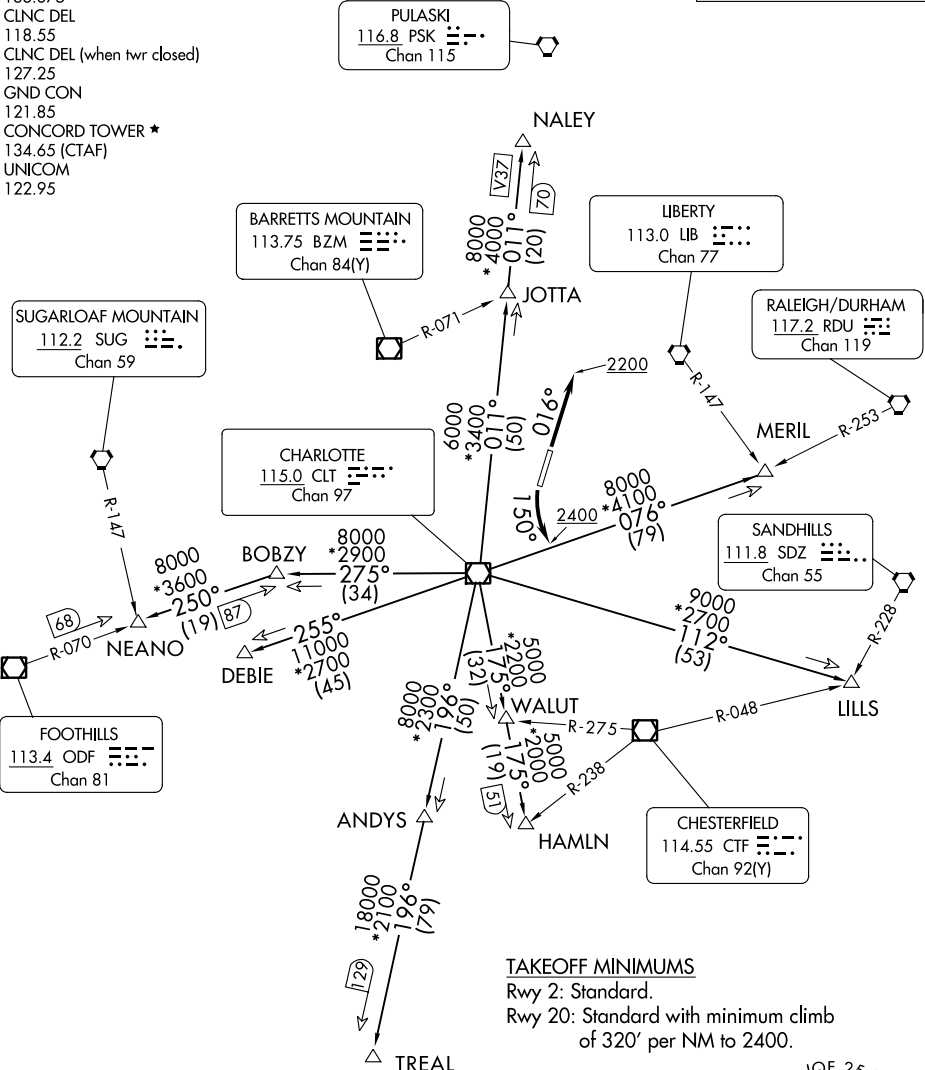
AL-9155 (FAA)

CONCORD-PADGETT RGNL (JQF)
 CONCORD, NORTH CAROLINA

CHARLOTTE DEP CON
 128.325 307.8
 ATIS ★
 133.675
 CLNC DEL
 118.55
 CLNC DEL (when twr closed)
 127.25
 GND CON
 121.85
 CONCORD TOWER ★
 134.65 (CTAF)
 UNICOM
 122.95

RADAR and DME required.

**TOP ALTITUDE:
 3000**



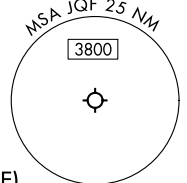
TAKEOFF MINIMUMS

Rwy 2: Standard.
 Rwy 20: Standard with minimum climb
 of 320' per NM to 2400.

NOTE: For turbo jet aircraft only.
 NOTE: Upon reaching 10000 MSL, accelerate to
 and maintain 280K, if unable advise ATC.
 NOTE: Transponder code will be issued via Concord ATCT
 or Charlotte clearance delivery.

NOTE: Chart not to scale.

(CONTINUED ON FOLLOWING PAGE)



KERMIT FOUR DEPARTURE
 (KER4.KER) 21MAR24

CONCORD, NORTH CAROLINA
 CONCORD-PADGETT RGNL (JQF)

SE-2, 26 DEC 2024 to 23 JAN 2025

SE-2, 26 DEC 2024 to 23 JAN 2025

KERMIT FOUR DEPARTURE



DEPARTURE ROUTE DESCRIPTION

TAKEOFF RUNWAY 2: Climb on heading 016° to 2200, thence

TAKEOFF RUNWAY 20: Climbing left turn heading 150° to 2400, thence

. . . . on RADAR vectors to intercept filed/assigned transition or enroute fix/navaid.

Maintain 3000, expect filed altitude/flight level 10 minutes after departure.

ANDYS TRANSITION (KER4.ANDYS): From over CLT VOR/DME on CLT R-196 to ANDYS.

DEBIE TRANSITION (KER4.DEBIE): From over CLT VOR/DME on CLT R-255 to DEBIE.

HAMLN TRANSITION (KER4.HAMLN): From over CLT VOR/DME on CLT R-175 to HAMLN.

JOTTA TRANSITION (KER4.JOTTA): From over CLT VOR/DME on CLT R-011 to JOTTA.

LILLS TRANSITION (KER4.LILLS): From over CLT VOR/DME on CLT R-112 to LILLS.

MERIL TRANSITION (KER4.MERIL): From over CLT VOR/DME on CLT R-076 to MERIL.

NALEY TRANSITION (KER4.NALEY): From over CLT VOR/DME on CLT R-011 to NALEY.

NEANO TRANSITION (KER4.NEANO): From over CLT VOR/DME on CLT R-275 to BOBZY,
then on ODF R-070 to NEANO.

TREAL TRANSITION (KER4.TREAL): From over CLT VOR/DME on CLT R-196 to TREAL.

SE-2, 26 DEC 2024 to 23 JAN 2025

SE-2, 26 DEC 2024 to 23 JAN 2025