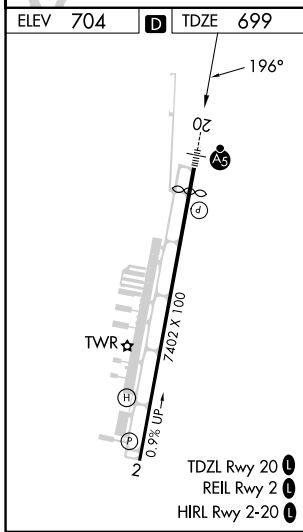
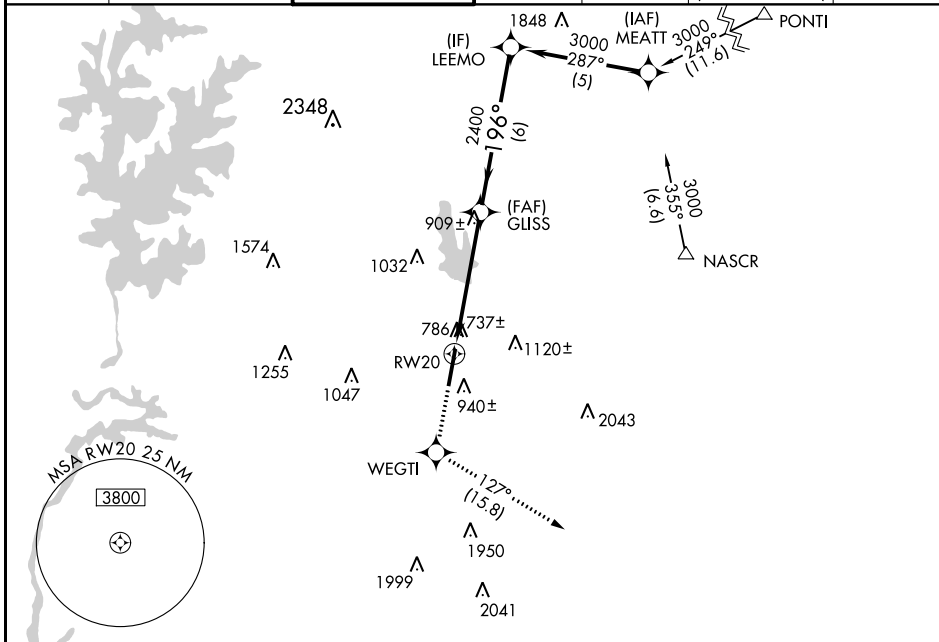


WAAS CH 56499 W20A	APP CRS 196°	Rwy Idg TDZE Apt Elev	6350 699 704
--	------------------------	-----------------------------	---

RNAV (GPS) RWY 20

CONCORD-PADGETT RGNL (JQF)

RNP APCH-GPS.		MALSR		MISSED APPROACH: Climb to 3000 direct WEGTI and on track 127° to LOCAS and hold.	
<p>▼ For uncompensated Baro-VNAV systems, LNAV/VNAV NA below -16°C or above 54°C. For inop ALS, increase LNAV/VNAV visibility all Cats to 1$\frac{3}{8}$ SM. Rwy 20 helicopter visibility reduction below $\frac{3}{4}$ SM NA.</p>		<p>▲ ATIS* 133.675</p>		<p>▲ CHARLOTTE APP CON 128.325 307.8</p>	
<p>▲ CONCORD TOWER* 134.65 (CTAF) 0</p>		<p>▲ GND CON 121.85</p>		<p>▲ CLNC DEL 118.55</p>	
<p>▲ CLNC DEL 127.25 (when twr closed)</p>		<p>▲ UNICOM 122.95</p>			



ELEV 704	D	TDZE 699	LOCAS 093° 4 NM 273°	
3000	WEGTI	LOCAS	LEEMO	
↑	✦	↑ tr 127°	3000	
*LNAV only.				
RW20	*1.8 NM to RW20	GLISS 2400	196°	3000
1.8 NM		3.3 NM		GP 3.00° TCH 44
1.8 NM		6 NM		
CATEGORY	A	B	C	D
LPV DA		1026- $\frac{3}{4}$	327 (400- $\frac{3}{4}$)	
LNAV/VNAV DA		1222-1 $\frac{1}{4}$ 523 (600-1 $\frac{1}{4}$)		
LNAV MDA	1300- $\frac{3}{4}$	601 (600- $\frac{3}{4}$)	1300-1 $\frac{3}{8}$	601 (600-1 $\frac{3}{8}$)
C CIRCLING	1300-1	596 (600-1)	1480-2 $\frac{1}{4}$ 776 (800-2 $\frac{1}{4}$)	1480-2 $\frac{1}{2}$ 776 (800-2 $\frac{1}{2}$)

SE-2, 26 DEC 2024 to 23 JAN 2025

SE-2, 26 DEC 2024 to 23 JAN 2025