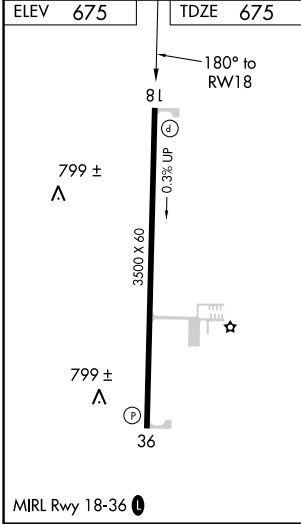
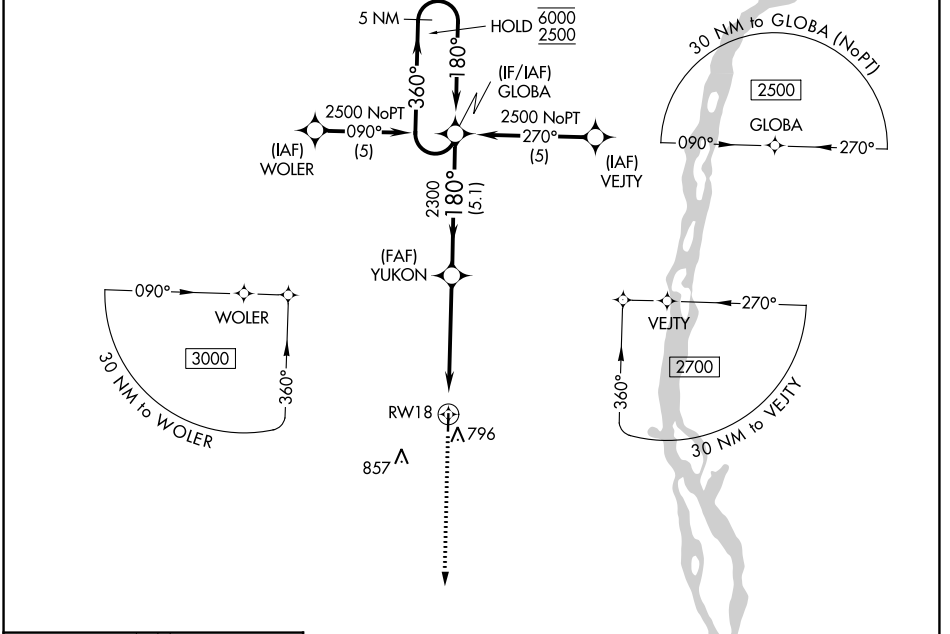


WAAS CH 50401 W18A	APP CRS 180°	Rwy Idg TDZE Apt Elev	3500 675 675
--	------------------------	-----------------------------	---

RNAV (GPS) RWY 18

LEWIS COUNTY RGNL (6M6)

RNP APCH.		MISSED APPROACH: Climb to 2300 direct GRITE and hold.	
UIN ASOS 121.425	KANSAS CITY CENTER 126.225 317.775	UNICOM 122.7 (CTAF) 0	



ELEV 675	TDZE 675	1643 Δ	
		4 NM Holding Pattern	
		GP 3.00° TCH 40	
CATEGORY	A	B	C
LPV DA	1035-1¼	360 (400-1¼)	NA
LNAV/VNAV DA	1082-1½	407 (500-1½)	NA
LNAV MDA	1220-1	545 (600-1)	NA

NC-3, 26 DEC 2024 to 23 JAN 2025

NC-3, 26 DEC 2024 to 23 JAN 2025