

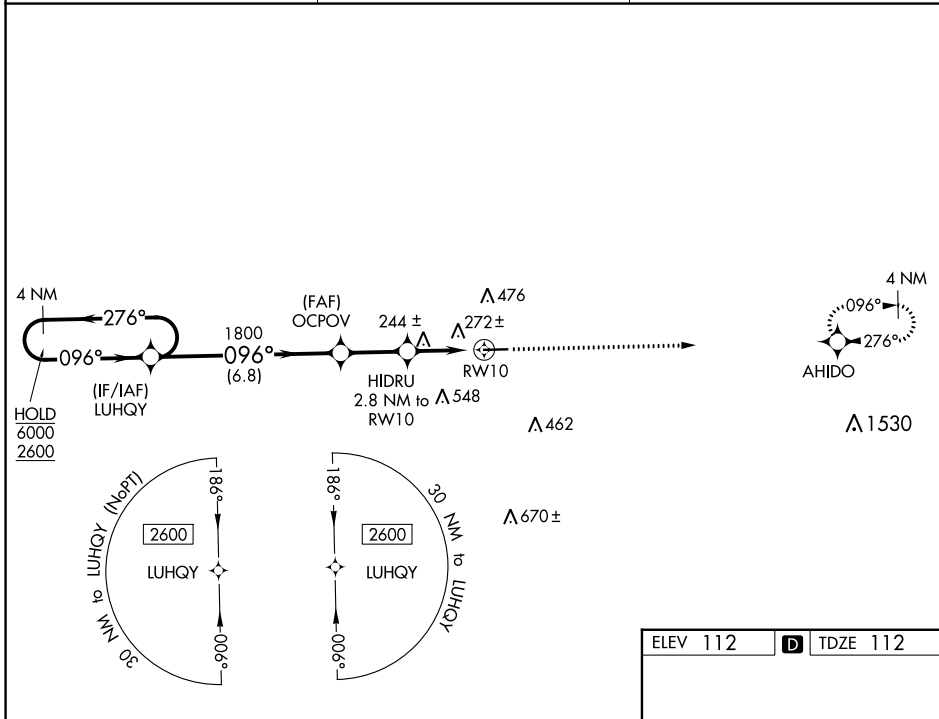
WAAS CH <b>45914</b> <b>W10A</b>	APP CRS <b>096°</b>	Rwy Idg TDZE Apt Elev	<b>5001</b> <b>112</b> <b>112</b>
--	------------------------	-----------------------------	---

# RNAV (GPS) RWY 10

CLAXTON-EVANS COUNTY (C'WV)

RNP APCH GPS.	MISSED APPROACH: Climb to 2600 direct AHIDO and hold.
<p>▼ Straight-In Rwy 10 NA at night.</p> <p>▲ Rwy 10 helicopter visibility reduction below 1 SM NA.</p>	

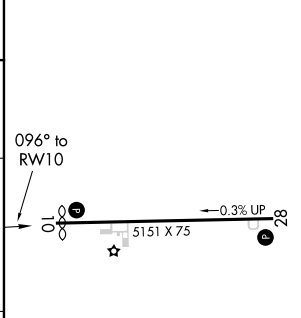
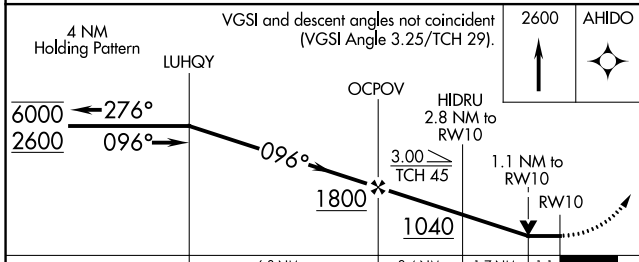
AWOS-3 <b>120.075</b>	JACKSONVILLE CENTER <b>132.925 363.2</b>	UNICOM <b>122.8</b> (CTAF) <b>1</b>
--------------------------	---	--



SE-4, 26 DEC 2024 to 23 JAN 2025

SE-4, 26 DEC 2024 to 23 JAN 2025

ELEV 112	<b>D</b> TDZE 112
----------	-------------------



CATEGORY	A	B	C	D
LP MDA	500-1	388 (400-1)	500-1 $\frac{1}{8}$	388 (400-1 $\frac{1}{8}$ )
LNAV MDA	540-1	428 (500-1)	540-1 $\frac{1}{4}$	428 (500-1 $\frac{1}{4}$ )
<b>C</b> CIRCLING	580-1 468 (500-1)	780-1 668 (700-1)	860-2 $\frac{1}{4}$ 748 (800-2 $\frac{1}{4}$ )	860-2 $\frac{1}{2}$ 748 (800-2 $\frac{1}{2}$ )

MIRL Rwy 10-28 **1**  
REIL Rwys 10 and 28 **1**