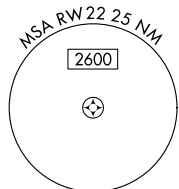


APP CRS	Rwy Idg	N/A
216°	TDZE	N/A
	Apt Elev	421

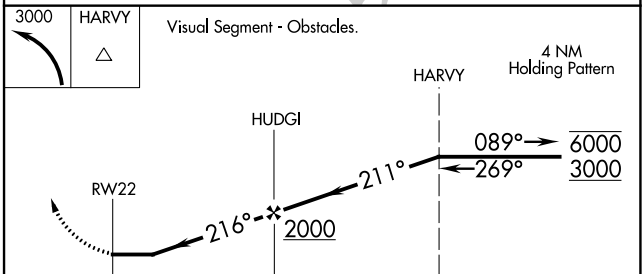
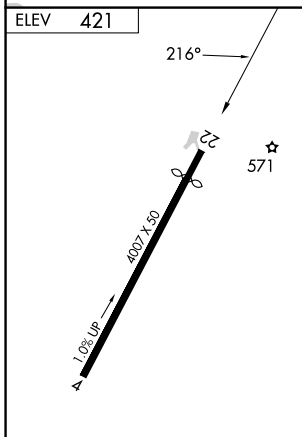
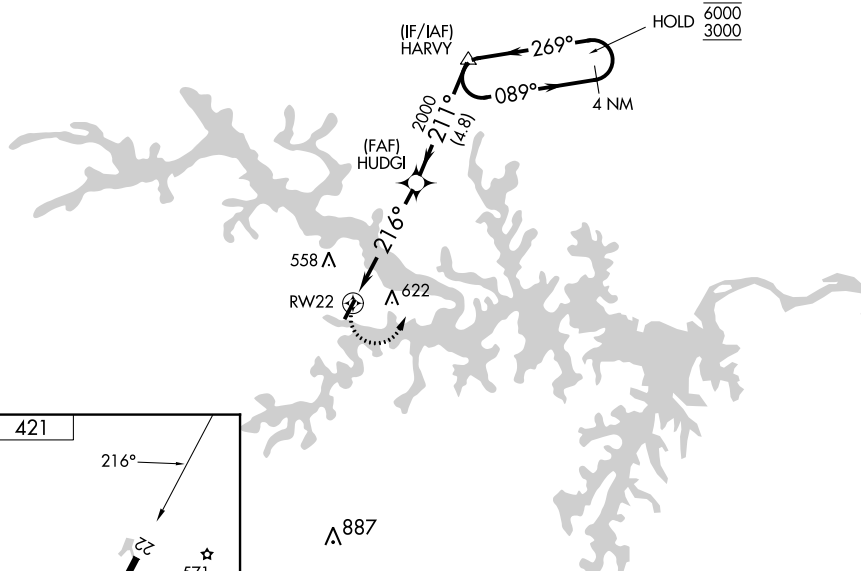
RNAV (GPS)-B

LAKE COUNTRY RGNL (W63)

RNP APCH - GPS.		MISSED APPROACH: Climbing left turn to 3000 direct HARVY and hold.
<p>▼ Rwy 22 helicopter visibility reduction below 1 SM NA.</p> <p>▲ Procedure NA at night. When local altimeter setting not received, use Chase City altimeter setting and increase all MDA 40 feet.</p>		
AWOS-3 118.225	WASHINGTON CENTER 118.75 377.1	CTAF 122.9



NoPT for arrival at HARVY on V3 southwest bound and on V266 westbound.



MIRL Rwy 4-22	C CIRCLING	1440-3	1019 (1100-3)	NA
---------------	-------------------	--------	---------------	----

NE-3, 26 DEC 2024 to 23 JAN 2025

NE-3, 26 DEC 2024 to 23 JAN 2025