

WAAS CH 45707 W33A	APP CRS 327°	Rwy ldg TDZE 1162 Apt Elev 1165
--	------------------------	---

RNAV (GPS) RWY 33

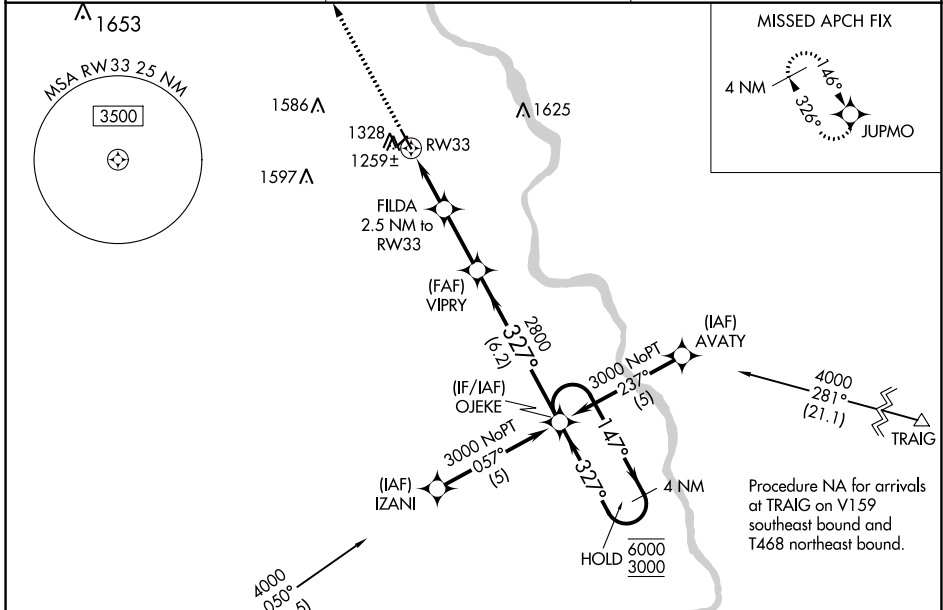
NEBRASKA CITY MUNI (AFK)

RNP APCH - GPS.

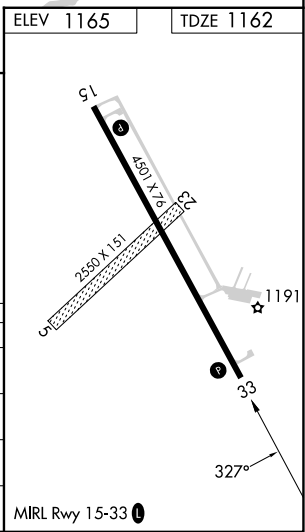
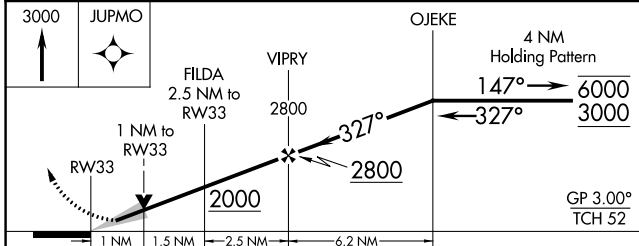
⚠ Circling NA to Rws 5 and 23. For uncompensated Baro-VNAV systems, LNAV/VNAV NA below -17°C or above 54°C.

MISSED APPROACH: Climb to 3000 direct JUPMO and hold.

AWOS-3PT 128.325	OMAHA APP CON 135.875 354.05	UNICOM 122.7 (CTAF) 0
----------------------------	--	---------------------------------



ELEV 1165	TDZE 1162
-----------	-----------



CATEGORY	A	B	C	D
LPV DA	1362-1 200 (200-1)			NA
LNAV/VNAV DA	1421-1 259 (300-1)			NA
LNAV MDA	1520-1 358 (400-1)			NA
C CIRCLING	1640-1 475 (500-1)			NA

NC-2, 26 DEC 2024 to 23 JAN 2025

NC-2, 26 DEC 2024 to 23 JAN 2025