

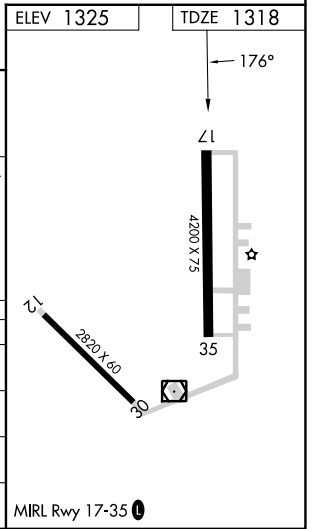
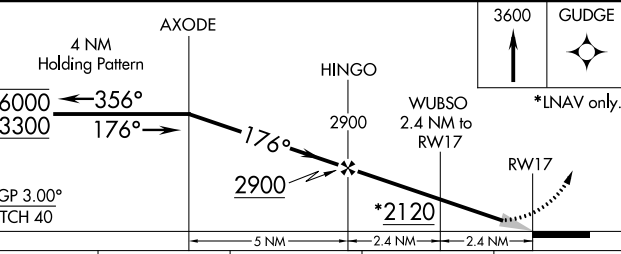
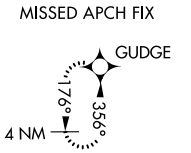
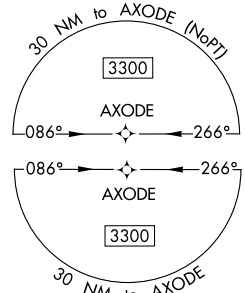
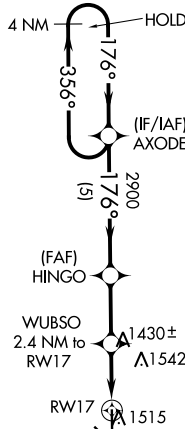
WAAS CH <b>58034</b> <b>W17A</b>	APP CRS <b>176°</b>	Rwy Idg TDZE Apt Elev	<b>4200</b> <b>1318</b> <b>1325</b>
--	------------------------	-----------------------------	---

# RNAV (GPS) RWY 17

SCRIBNER STATE (SCB)

RNP APCH.		MISSED APPROACH: Climb to 3600 direct GUDGE and hold.
▽ Baro-VNAV NA. Use Fremont altimeter setting, when not received, use ▲NA Wahoo altimeter setting and increase LPV DA to 1592 feet, LNAV/VNAV DA to 1638 feet and all MDAs 40 feet, increase LPV Cats A/B visibility 1/8 SM.		
FET AWOS-3 <b>121.275</b>	OMAHA APP CON <b>135.875 354.05</b>	CTAF <b>122.9</b>

1871 A



CATEGORY	A	B	C	D
LPV DA	1568-3/4	250 (300-3/4)		NA
LNAV/VNAV DA	1614-1	296 (300-1)		NA
LNAV MDA	1740-1	422 (500-1)		NA
<b>C</b> CIRCLING	1900-1	575 (600-1)		NA

NC-2, 26 DEC 2024 to 23 JAN 2025

NC-2, 26 DEC 2024 to 23 JAN 2025