

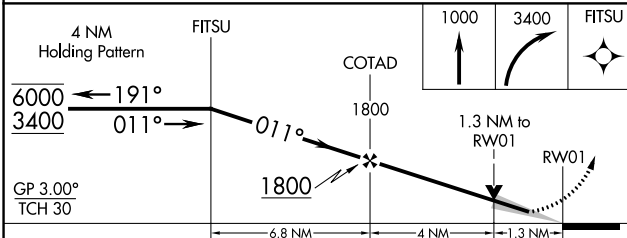
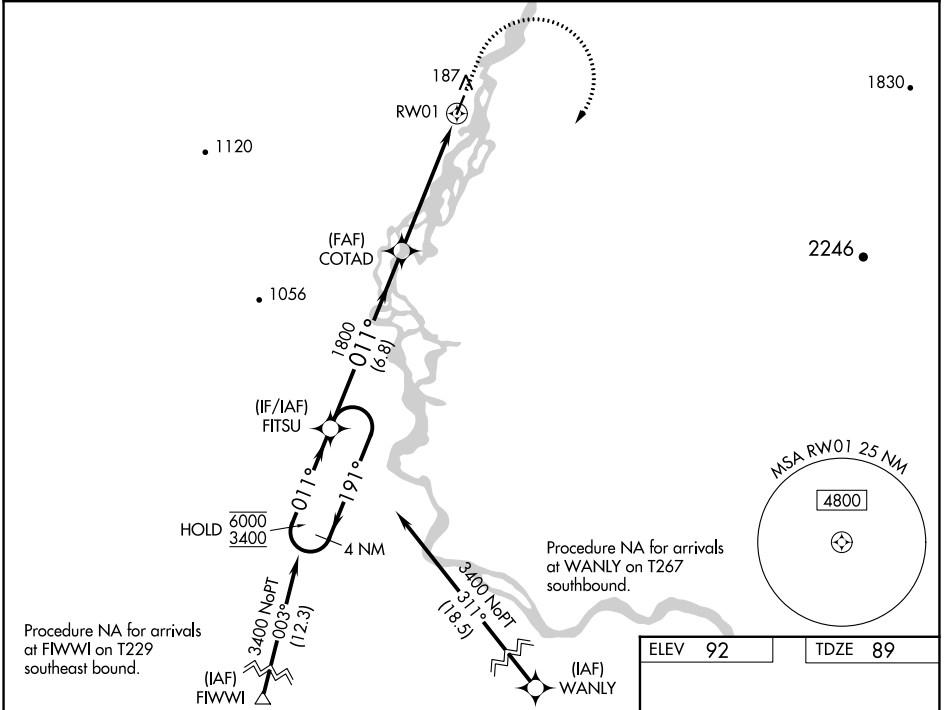
WAAS CH 61142 W01A	APP CRS 011°	Rwy Idg 3992 TDZE 89 Apt Elev 92
--	------------------------	---

RNAV (GPS) RWY 1

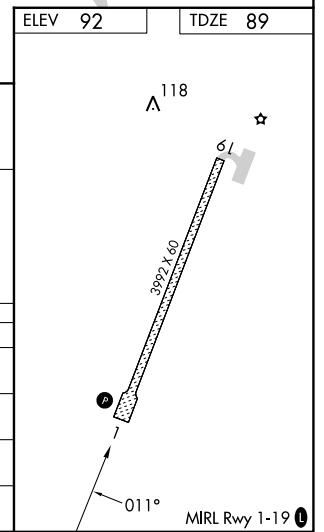
NOATAK (WTK)(PAWN)

RNP APCH-GPS.	MISSED APPROACH: Climb to 1000 then climbing right turn to 3400 direct FITSU and hold.
<p>▼ For uncompensated Baro-VNAV systems, procedure NA below -22°C or above 54°C. Circling Rwy 19 NA at night.</p>	

AWOS-3P 135.75	ANCHORAGE CENTER 119.2 263.0	KOTZEBUE RADIO 122.4	UNICOM 122.8 (CTAF) 0
--------------------------	--	--------------------------------	---------------------------------



CATEGORY	A	B	C	D
LPV DA	339-1 250 (300-1)			
LNAV/VNAV DA	339-1 250 (300-1)			
LNAV MDA	520-1 431 (500-1)	520-1¼ 431 (500-1¼)		
CIRCLING	520-1 428 (500-1)	560-1 468 (500-1)	560-1½ 468 (500-1½)	820-2¼ 728 (800-2¼)



AK, 26 DEC 2024 to 20 FEB 2025

AK, 26 DEC 2024 to 20 FEB 2025