

DALLAS THREE DEPARTURE
(DAL3 TTT) 25JAN24

GRAND PRAIRIE MUNI (GPM)
GRAND PRAIRIE, TEXAS

LONE STAR DEP CON
135.975 379.9
GND CON
121.15
GRAND PRAIRIE TOWER ★
128.55 (CTAF)

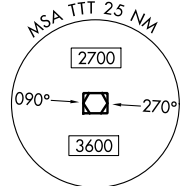
RADAR and DME required.

TAKEOFF MINIMUMS
Rwy 18: Standard.
Rwy 36: NA-ATC.

TOP ALTITUDE:
ASSIGNED BY ATC

LITTLE ROCK
113.9 LIT
Chan 86

TEXARKANA
116.3 TXK
Chan 110



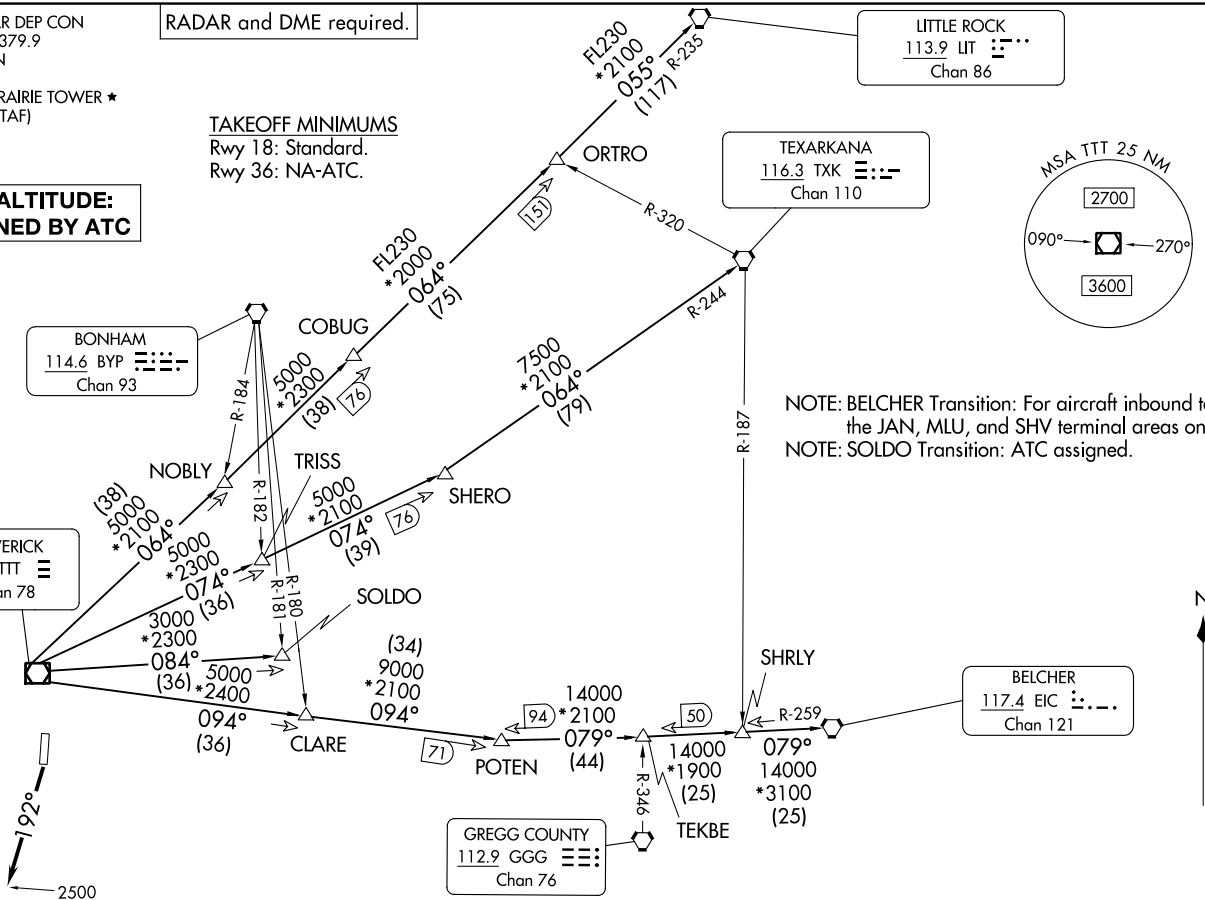
NOTE: BELCHER Transition: For aircraft inbound to the JAN, MLU, and SHV terminal areas only.
NOTE: SOLDO Transition: ATC assigned.

BONHAM
114.6 BYP
Chan 93

MAVERICK
113.1 TTT
Chan 78

BELCHER
117.4 EIC
Chan 121

GREGG COUNTY
112.9 GGG
Chan 76



(CONTINUED ON FOLLOWING PAGE)

NOTE: Chart not to scale.

(DAL3 TTT) 24305
DALLAS THREE DEPARTURE

AT-9209 (FAA)

GRAND PRAIRIE MUNI (GPM)
GRAND PRAIRIE, TEXAS

DALLAS THREE DEPARTURE



DEPARTURE ROUTE DESCRIPTION

TAKEOFF RUNWAY 18: Climb on heading 192° to 2500 before proceeding on course.

When entering controlled airspace, fly assigned heading for RADAR vectors to appropriate route. Maintain ATC assigned altitude.

BELCHER TRANSITION (DALL3.EIC): From over TTT VOR/DME on TTT R-094 to POTEN, then on EIC R-259 to EIC VORTAC.

LITTLE ROCK TRANSITION (DALL3.LIT): From over TTT VOR/DME on TTT R-064 to ORTRO, then on LIT R-235 to LIT VORTAC.

SOLDO TRANSITION (DALL3.SOLDO): From over TTT VOR/DME on TTT R-084 to SOLDO.

TEXARKANA TRANSITION (DALL3.TXK): From over TTT VOR/DME on TTT R-074 to SHERO, then on TXK R-244 to TXK VORTAC.

SC-2, 26 DEC 2024 to 23 JAN 2025

SC-2, 26 DEC 2024 to 23 JAN 2025