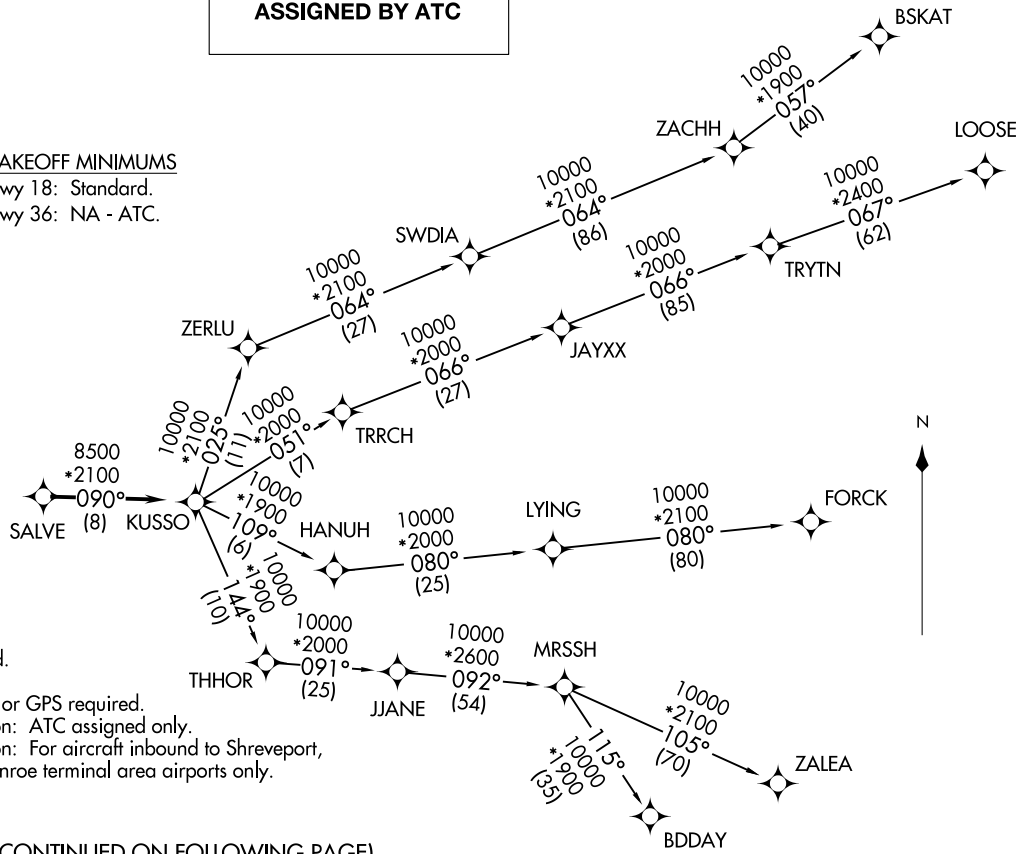
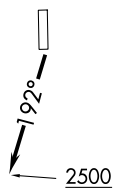


**TOP ALTITUDE:
ASSIGNED BY ATC**

LONE STAR DEP CON
135.975 379.9
GND CON
121.15
GRAND PRAIRIE TOWER ★
128.55 (CTAF)

TAKEOFF MINIMUMS
Rwy 18: Standard.
Rwy 36: NA - ATC.



- NOTE: RADAR required.
- NOTE: RNAV 1.
- NOTE: DME/DME/IRU or GPS required.
- NOTE: BDDAY Transition: ATC assigned only.
- NOTE: MRSSH Transition: For aircraft inbound to Shreveport, Jackson and Monroe terminal area airports only.

(CONTINUED ON FOLLOWING PAGE)

NOTE: Chart not to scale.

KUSSO ONE DEPARTURE (RNAV)
(KUSSO1 .KUSSO) 24MAR22

GRAND PRAIRIE, TEXAS
GRAND PRAIRIE MUNI (GPM)

(KUSSO1 .KUSSO) 24305
KUSSO ONE DEPARTURE (RNAV)

AL-9209 (FAA)
GRAND PRAIRIE MUNI (GPM)
GRAND PRAIRIE, TEXAS

KUSSO ONE DEPARTURE (RNAV)



DEPARTURE ROUTE DESCRIPTION

TAKEOFF RUNWAY 18: Climb on heading 192° to 2500 before proceeding on course.

When entering controlled airspace, fly heading assigned by ATC, expect vector to SALVE, then on track 090° to KUSSO, then on assigned transition. Maintain ATC assigned altitude, expect filed altitude 10 minutes after departure.

- BDDAY TRANSITION (KUSSO1.BDDAY)
- BSKAT TRANSITION (KUSSO1.BSKAT)
- FORCK TRANSITION (KUSSO1.FORCK)
- LOOSE TRANSITION (KUSSO1.LOOSE)
- MRSSH TRANSITION (KUSSO1.MRSSH)
- ZALEA TRANSITION (KUSSO1.ZALEA)

SC-2, 26 DEC 2024 to 23 JAN 2025

SC-2, 26 DEC 2024 to 23 JAN 2025