

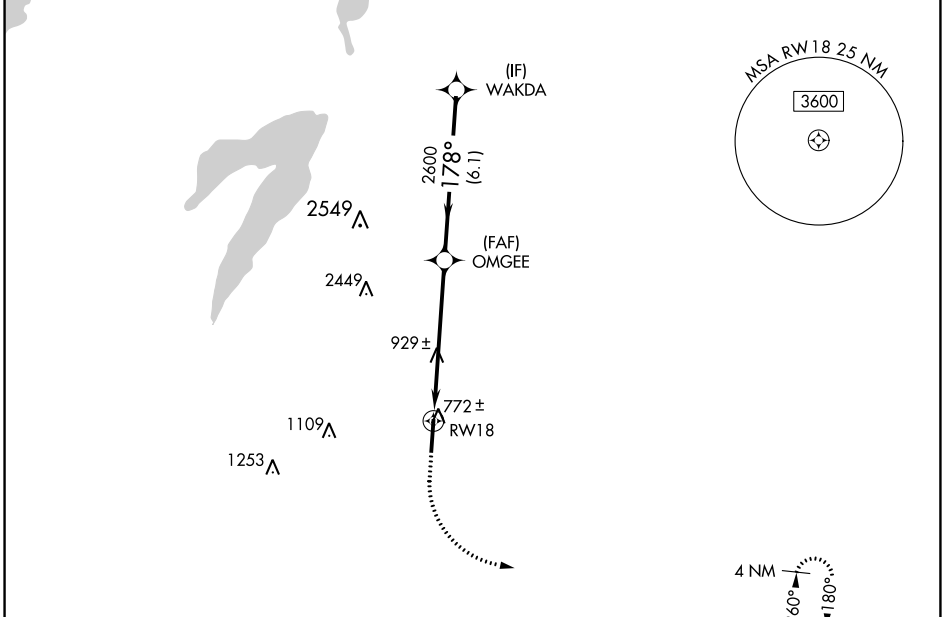
WAAS CH 62920 W18A	APP CRS 178°	Rwy Idg 6500 TDZE 727 Apt Elev 727
--	------------------------	---

RNAV (GPS) RWY 18

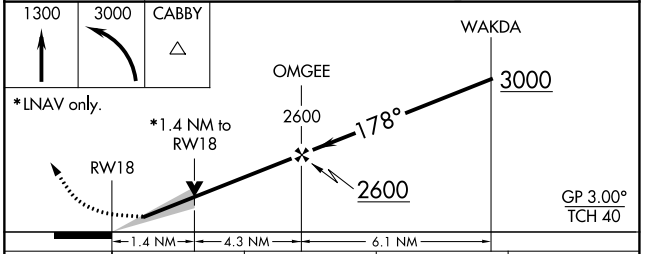
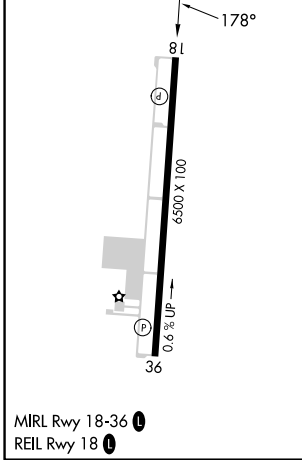
MID-WAY RGNL (JWY)

RNP APCH.	<p>MISSED APPROACH: Climb to 1300 then climbing left turn to 3000 direct CABBY and hold.</p>
<p>▽ ▲</p> <p>For uncompensated Baro-VNAV systems, LNAV/VNAV NA below -16°C or above 54°C.</p>	

AWOS-3P 119.575	LONE STAR APP CON 125.2 343.65	UNICOM 122.975 (CTAF)
---------------------------	--	---------------------------------



ELEV 727	TDZE 727
-----------------	-----------------



CATEGORY	A	B	C	D
LPV DA	927-3/4 200 (200-3/4)			
LNAV/VNAV DA	998-7/8 271 (300-7/8)			
LNAV MDA	1220-1 493 (500-1)		1220-1 3/8 493 (500-1 3/8)	
CIRCLING	1220-1 493 (500-1)		1300-1 1/2 573 (600-1 1/2) 1420-2 1/4 693 (700-2 1/4)	

SC-2, 26 DEC 2024 to 23 JAN 2025

SC-2, 26 DEC 2024 to 23 JAN 2025