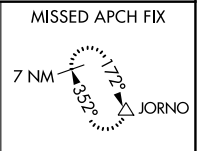
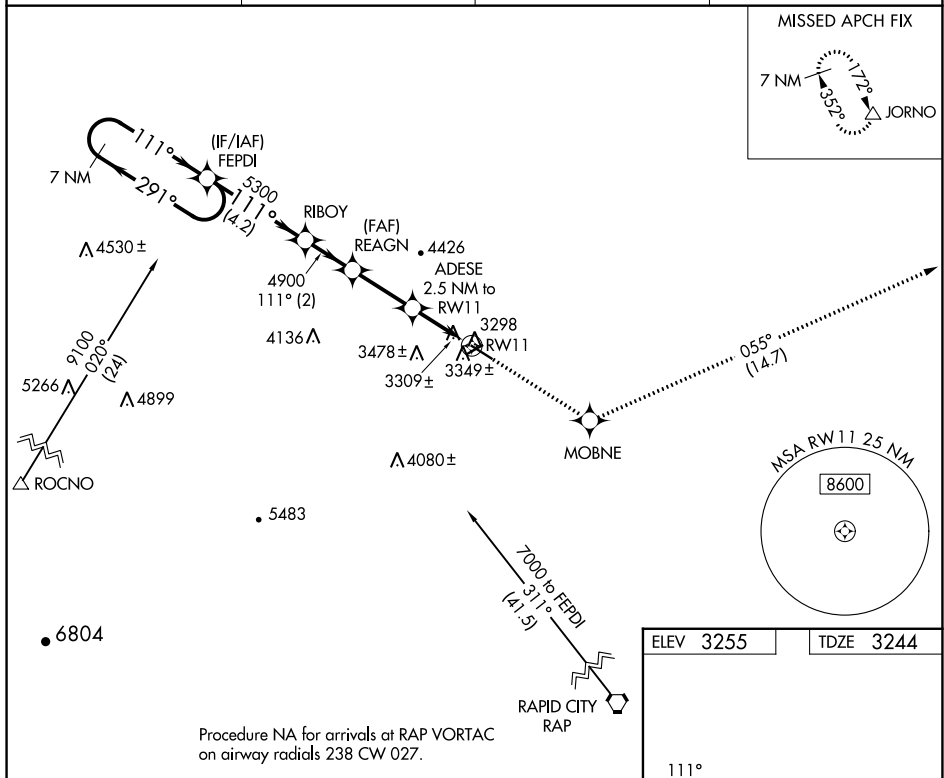


WAAS CH <b>53432</b> <b>W11A</b>	APP CRS <b>111°</b>	Rwy Idg TDZE Apt Elev	<b>5100</b> <b>3244</b> <b>3255</b>
--	------------------------	-----------------------------	---

# RNAV (GPS) RWY 11

STURGIS MUNI (49B)

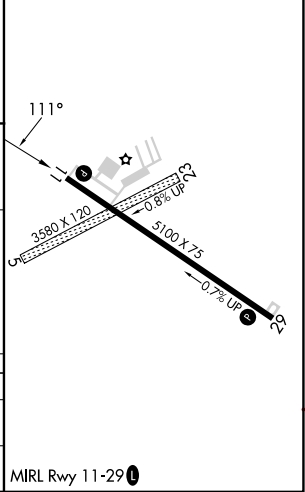
RNP APCH - GPS.		MISSED APPROACH: Climb to 7000 direct MOBNE and on track 055° to JORNNO and hold.	
▼ Rwy 11 helicopter visibility reduction below 3/4 SM NA.			
AWOS-3P <b>119.275</b>	ELLSWORTH APP CON ★ <b>119.5 259.1</b>	GCO <b>121.725</b>	UNICOM <b>122.8 (CTAF) 0</b>



ELEV 3255	TDZE 3244
-----------	-----------

VGSI and descent angles not coincident (VGSI Angle 3.00/TCH 22).

7 NM Holding Pattern	FEPDI	RIBOY	REAGN	ADESE 2.5 NM to RW11	JORNNO
6600	5300	4900	4080	4080	7000
291°	111°	111°	3.00° TCH 50	055°	
4.2 NM	2 NM	2.5 NM	2.5 NM		
CATEGORY	A	B	C	D	
LP MDA	3620-1 376 (400-1)			NA	
LNAV MDA	3660-1 416 (500-1)		3660-1 1/8 416 (500-1 1/8)	NA	



NC-1, 26 DEC 2024 to 23 JAN 2025

NC-1, 26 DEC 2024 to 23 JAN 2025

Procedure NA for arrivals at RAP VORTAC on airway radials 238 CW 027.

MRL Rwy 11-29 0