

WAAS CH <b>90321</b> <b>W29A</b>	APP CRS <b>292°</b>	Rwy Idg TDZE Apt Elev	<b>5100</b> <b>3231</b> <b>3255</b>
--	------------------------	-----------------------------	---

# RNAV (GPS) RWY 29

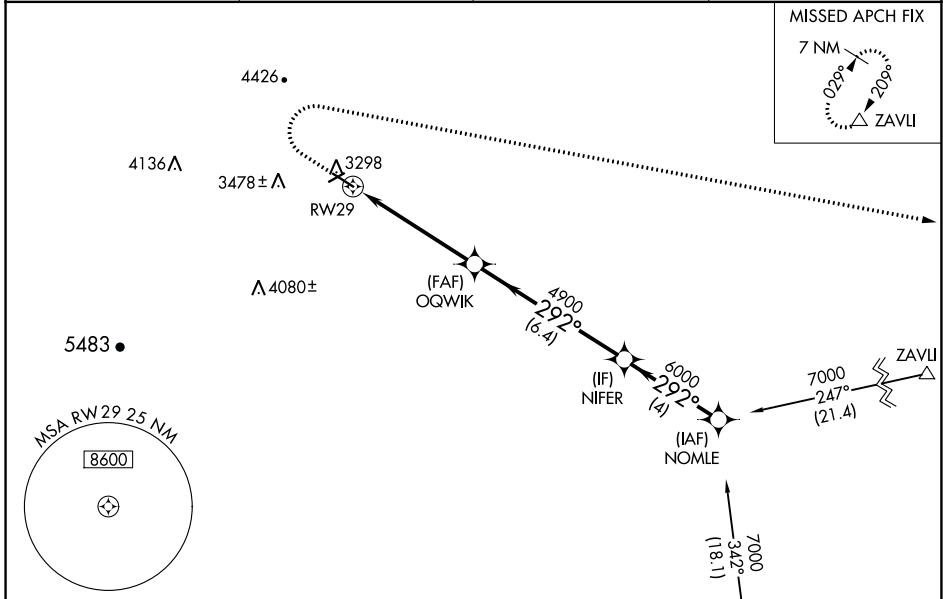
STURGIS MUNI (49B)

RNP APCH - GPS.

For uncompensated Baro-VNAV systems, LNAV/VNAV NA below -21°C or above 54°C  
 \*Missed approach requires minimum climb of 364 feet per NM to 4900.

MISSED APPROACH: Climb to 3700 then climbing right turn to 7000 direct ZAVLI and hold.

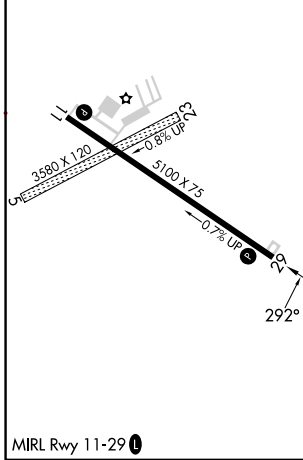
AWOS-3P <b>119.275</b>	ELLSWORTH APP CON * <b>119.5 259.1</b>	GCO <b>121.725</b>	UNICOM <b>122.8 (CTAF)</b>
---------------------------	---	-----------------------	-------------------------------



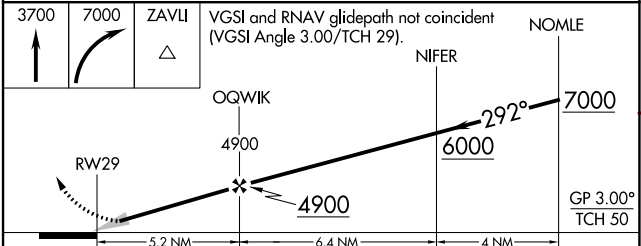
NC-1, 26 DEC 2024 to 23 JAN 2025

NC-1, 26 DEC 2024 to 23 JAN 2025

ELEV 3255	TDZE 3231
-----------	-----------



Procedure NA for arrivals at RAP VORTAC on airway radials 252 CW 072.



CATEGORY	A	B	C	D
LPV DA*	3532-1 301 (300-1)			NA
LPV DA	3532-1 301 (300-1)		4073-3 842 (900-3)	NA
LNAV/VNAV DA	3532-1 301 (300-1)		3986-3 755 (800-3)	NA
LNAV MDA	3640-1 409 (400-1)		4280-3 1049 (1100-3)	NA