

LOC/DME I-JFZ <b>109.75</b> Chan 34 (Y)	APP CRS <b>252°</b>	Rwy Idg TDZE Apt Elev	<b>4299</b> <b>2653</b> <b>2653</b>
---	------------------------	-----------------------------	---

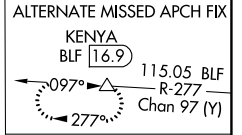
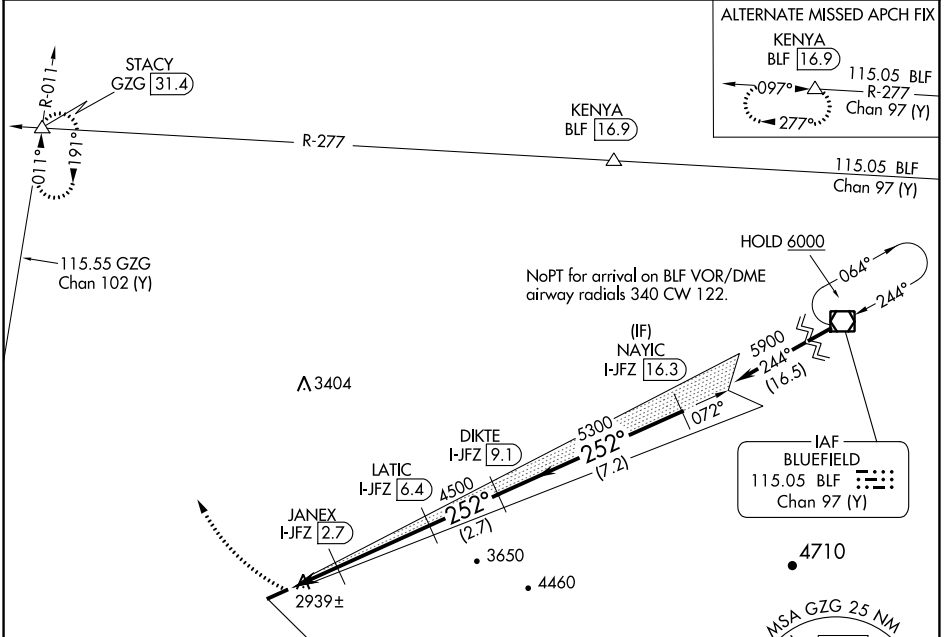
# LOC/DME RWY 25

TAZEWELL COUNTY (JF'Z)

**⚠** Visibility reduction by helicopters NA. When local altimeter setting not received use Wise altimeter setting and increase all MDA 100 feet, increase S-25 Cat C visibility ¼ mile and Circling Cat C visibility ⅓ mile. When VGSI inop, Straight-in/Circling Rwy 25 NA at night. When VGSI inop, Circling Rwy 7 NA at night. Circling NA for Cat C south of Rwy 7-25.

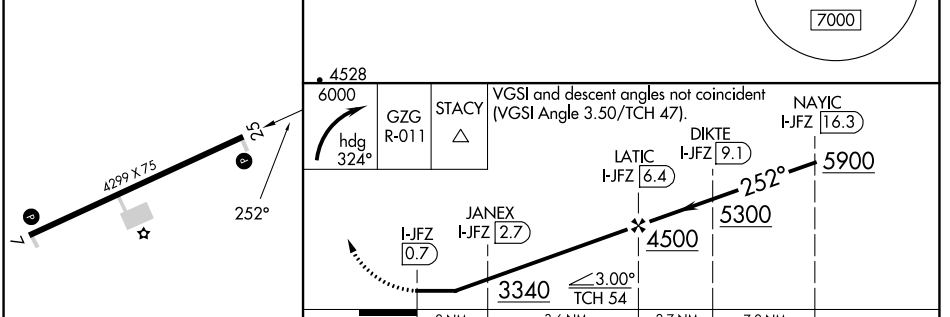
**MISSED APPROACH:** Climbing right turn to 6000 on heading 324° and GZG R-011 to STACY INT/VGZ 31.4 DME and hold.

AWOS-3 <b>118.075</b>	ATLANTA CENTER <b>127.85 269.3</b>	GCO <b>135.075</b>	UNICOM <b>123.05 (CTAF) 0</b>
--------------------------	---------------------------------------	-----------------------	----------------------------------



ELEV 2653	TDZE 2653
-----------	-----------

LOCALIZER 109.75  
I-JFZ [diagram]  
Chan 34 (Y)



CATEGORY	A	B	C	D
S-25	3200-1	547 (600-1)	3200-1½ 547 (600-1½)	NA
<b>C</b> CIRCLING	3240-1	587 (600-1)	3240-1½ 587 (600-1½)	NA

MIRL Rwy 7-25 0  
REL Rws 7 and 25 0

NE-3, 26 DEC 2024 to 23 JAN 2025

NE-3, 26 DEC 2024 to 23 JAN 2025