

WAAS CH 53524 W25A	APP CRS 252°	Rwy Idg TDZE Apt Elev	4299 2653 2653
--	------------------------	-----------------------------	---

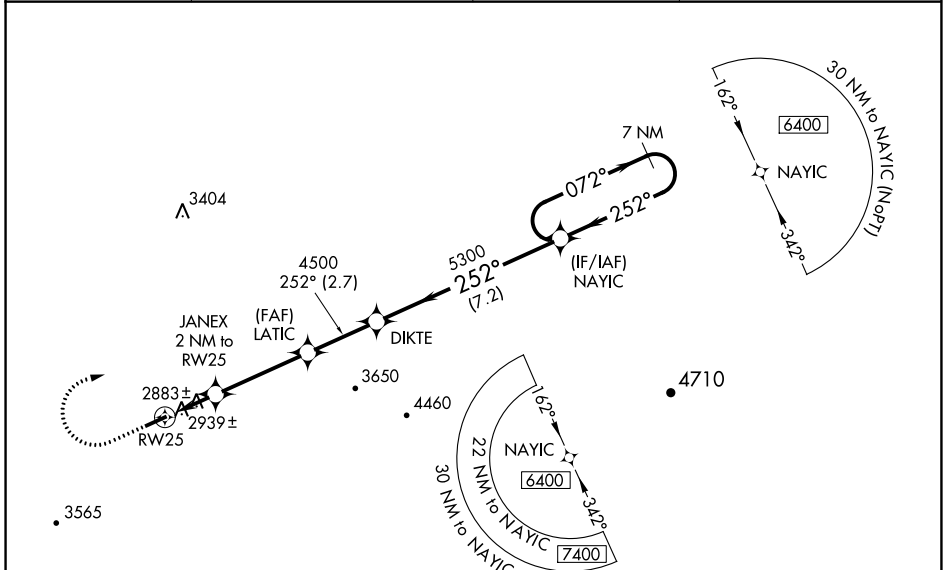
RNAV (GPS) RWY 25

TAZEWELL COUNTY (JF'Z)

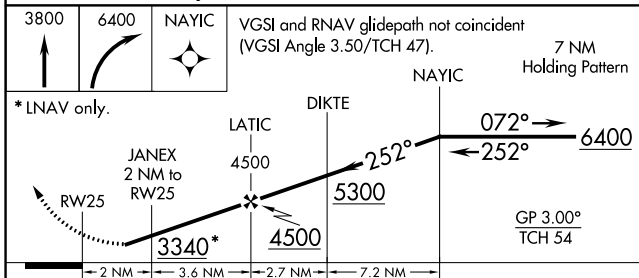
Baro-VNAV NA when using Wise altimeter setting. For uncompensated Baro-VNAV systems, LNAV/VNAV NA below -20°C (-4°F) or above 54°C (130°F). DME/DME RNP-0.3 NA. Visibility reduction by helicopters NA. When local altimeter setting not received, use Wise altimeter setting and increase all DA 86 feet and all MDA 100 feet, increase LPV and LNAV/VNAV all Cats and Circling Cat C visibility 3/8 mile, increase LNAV Cat C visibility 1/4 mile. When VGSI inop, Straight-in/Circling Rwy 25 procedure NA at night. When VGSI inop, Circling Rwy 7 NA at night. Circling NA for Cat C south of Rwy 7-25.

MISSED APPROACH:
Climb to 3800 then climbing right turn to 6400 direct NAYIC and hold, continue climb-in-hold to 6400.

AWOS-3 118.075	ATLANTA CENTER 127.85 269.3	GCO 135.075	UNICOM 123.05 (CTAF) 1
--------------------------	---------------------------------------	-----------------------	----------------------------------

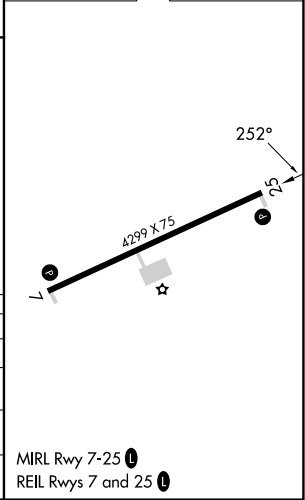


3800 6400 NAYIC VGSI and RNAV glidepath not coincident (VGSI Angle 3.50/TCH 47). 7 NM Holding Pattern



ELEV 2653	TDZE 2653
-----------	-----------

CATEGORY	A	B	C	D
LPV DA	3201-1 7/8	548 (600-1 7/8)		NA
LNAV/VNAV DA	3210-1 7/8	557 (600-1 7/8)		NA
LNAV MDA	3200-1 547 (600-1)		3200-1 5/8 547 (600-1 5/8)	NA
C CIRCLING	3240-1 587 (600-1)		3240-1 5/8 587 (600-1 5/8)	NA



NE-3, 26 DEC 2024 to 23 JAN 2025

NE-3, 26 DEC 2024 to 23 JAN 2025