

WAAS CH <b>63224</b> <b>W07A</b>	APP CRS <b>072°</b>	Rwy Idg TDZE <b>2653</b> Apt Elev <b>2653</b>	<b>4299</b>
--	------------------------	---	-------------

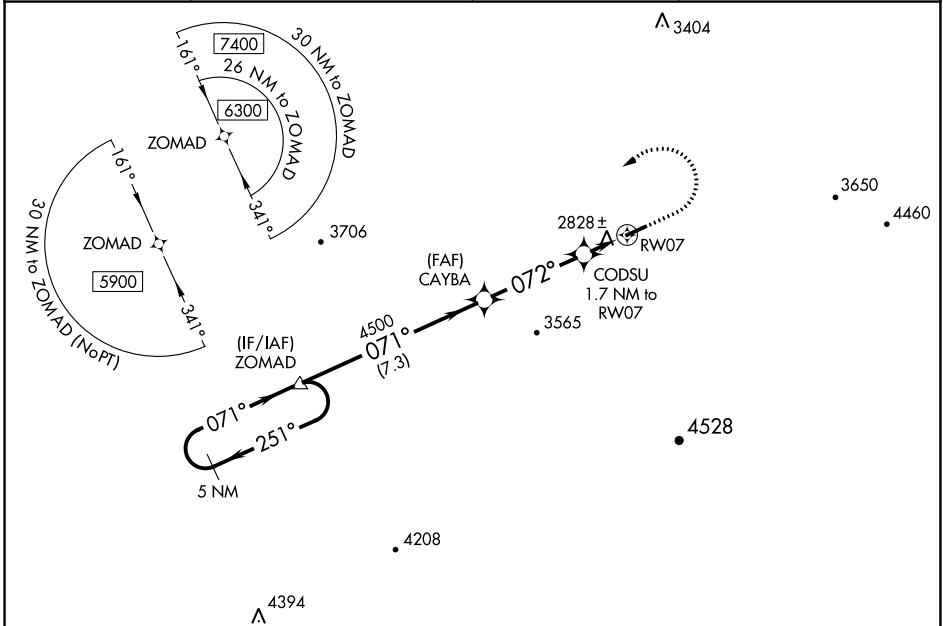
# RNAV (GPS) RWY 7

TAZEWELL COUNTY (JFZ)

**▼** DME/DME RNP-0.3 NA. Visibility reduction by helicopters NA. When local altimeter setting not received, use Wise altimeter setting and increase all MDA 100 feet, increase LP and LNAV Cat C visibility 1/4 mile and Circling Cat C visibility 1/2 mile. Procedure NA at night.  
**▲** Circling NA for Cat C south of Rwy 7-25.

**MISSED APPROACH:** Climb to 3200 then climbing left turn to 5900 direct ZOMAD and hold, continue climb-in-hold to 5900.

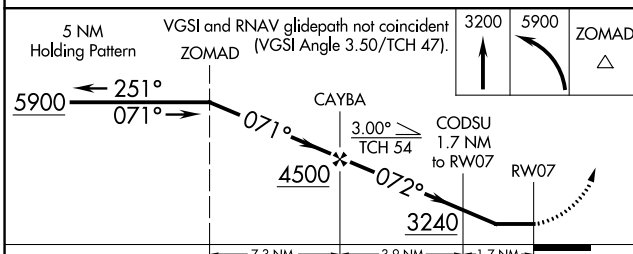
AWOS-3 <b>118.075</b>	ATLANTA CENTER <b>127.85 269.3</b>	GCO <b>135.075</b>	UNICOM <b>123.05 (CTAF)</b>
--------------------------	---------------------------------------	-----------------------	--------------------------------



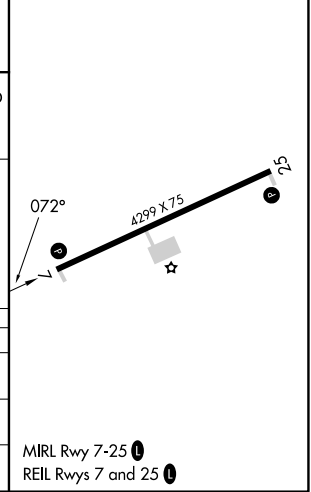
NE-3, 26 DEC 2024 to 23 JAN 2025

NE-3, 26 DEC 2024 to 23 JAN 2025

ELEV	2653	TDZE	2653
------	------	------	------



CATEGORY	A	B	C	D
LP MDA	3080-1	427 (500-1)	3080-1 1/4 427 (500-1 1/4)	NA
LNAV MDA	3080-1	427 (500-1)	3080-1 1/4 427 (500-1 1/4)	NA
<b>C</b> CIRCLING	3240-1	587 (600-1)	3240-1 1/2 587 (600-1 1/2)	NA



MIRL Rwy 7-25 **⓪**  
REIL Rwy 7 and 25 **⓪**