

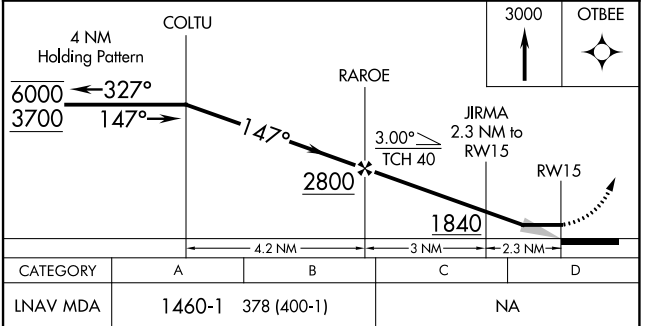
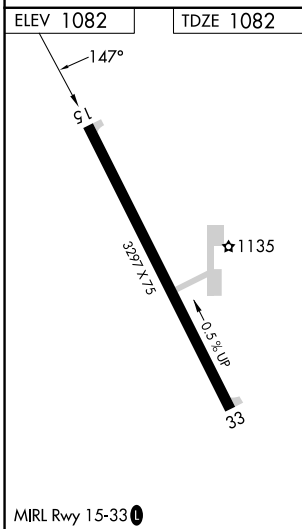
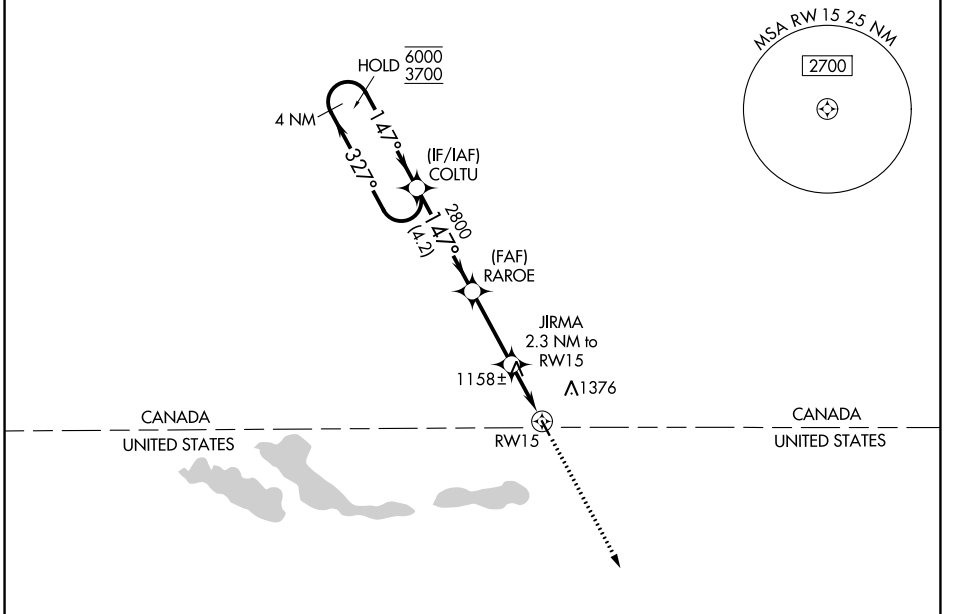
APP CRS	Rwy Idg	<b>3297</b>
<b>147°</b>	TDZE	<b>1082</b>
	Apt Elev	<b>1082</b>

# RNAV (GPS) RWY 15

PINEY PINECREEK BORDER (48Y)

RNP APCH - GPS.	MISSED APPROACH: Climb to 3000 direct OTBEE and hold.
<p>▼ Use Roseau altimeter setting; when not received, use Warroad altimeter setting and increase all MDA 40 feet.</p> <p>▲ NA</p>	

ROX AWOS-3 <b>118.075</b>	MINNEAPOLIS CENTER <b>134.75 251.1</b>	UNICOM <b>122.8 (CTAF) 0</b>
------------------------------	---	---------------------------------



NC-1, 26 DEC 2024 to 23 JAN 2025

NC-1, 26 DEC 2024 to 23 JAN 2025