

WAAS CH <b>58041</b> <b>W11A</b>	APP CRS <b>111°</b>	Rwy Idg <b>3200</b> TDZE <b>29</b> Apt Elev <b>29</b>
--	------------------------	---

# RNAV (GPS) RWY 11

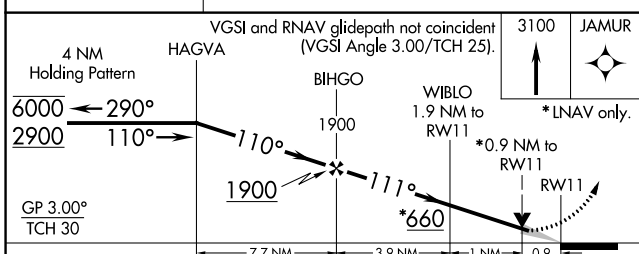
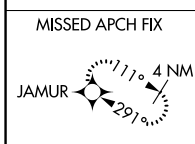
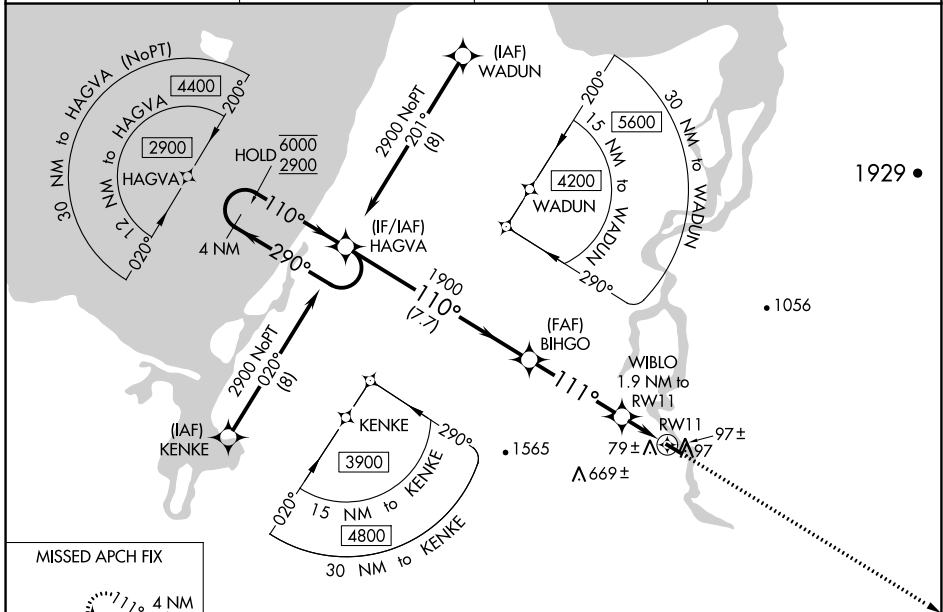
BUCKLAND (BVK)(PABL)

RNP APCH.

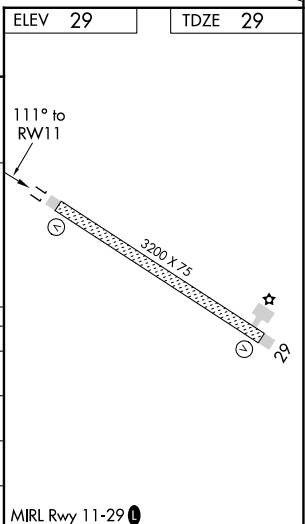
Baro-VNAV and VDP NA when using Selawik altimeter setting. For uncompensated Baro-VNAV systems, LNAV/VNAV NA below -21°C or above 54°C.  
When local altimeter setting is not received use Selawik altimeter setting; increase DA to 387 feet and all visibilities  $\frac{3}{8}$  SM; increase all MDAs 120 feet and visibility Cat C  $\frac{1}{4}$  SM.

MISSED APPROACH:  
Climb to 3100 direct JAMUR and hold, continue climb-in-hold to 3100.

AWOS-3P <b>135.15</b>	ANCHORAGE CENTER <b>119.2 263.0</b>	KOTZEBUE RADIO <b>122.3</b>	CTAF <b>122.9</b>
--------------------------	--	--------------------------------	----------------------



CATEGORY	A	B	C	D
LPV DA	279-1	250 (300-1)		NA
LNAV/VNAV DA	279-1	250 (300-1)		NA
LNAV MDA	340-1	311 (400-1)		NA
<b>C</b> CIRCLING	540-1	511 (600-1)	640-1 $\frac{3}{4}$ 611 (700-1 $\frac{3}{4}$ )	NA



AK, 26 DEC 2024 to 20 FEB 2025

AK, 26 DEC 2024 to 20 FEB 2025