

(KAKE1.LVD) 24305

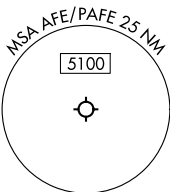
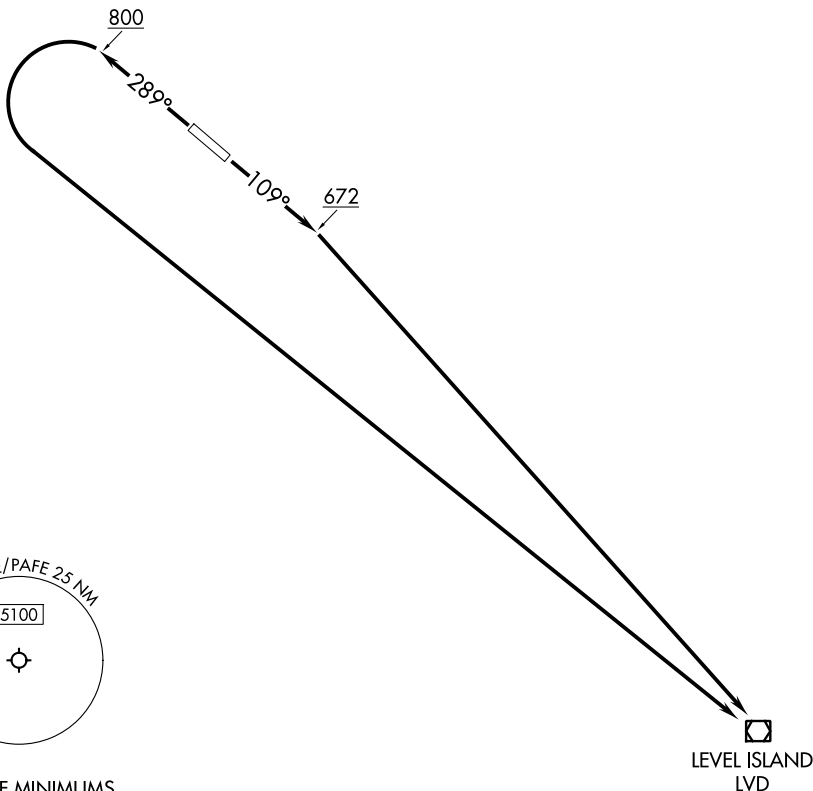
AL-9231 (FAA)

KAKE (AF'E)(PA'F'E)
KAKE, ALASKA

KAKE ONE DEPARTURE (OBSTACLE) (RNAV)

ANCHORAGE CENTER
132.175

RNP 1 - GPS.



TAKEOFF MINIMUMS

Rwy 11: 600-3 with minimum climb of 274' per NM to 900.

Rwy 29: 500-3 with minimum climb of 395' per NM to 900.

(CONTINUED ON FOLLOWING PAGE)

NOTE: Chart not to scale.

DEPARTURE ROUTE DESCRIPTION

TAKEOFF RUNWAY 11: Climb on heading 109° to 672, then direct LVD VOR/DME to cross LVD VOR/DME at or above MEA for route of flight.

TAKEOFF RUNWAY 29: Climb on heading 289° to 800, then climbing left turn direct LVD VOR/DME to cross LVD VOR/DME at or above MEA for route of flight.

KAKE ONE DEPARTURE (OBSTACLE) (RNAV)

(KAKE1.LVD) 31OCT24

KAKE, ALASKA
KAKE (AF'E)(PA'F'E)

AK, 26 DEC 2024 to 20 FEB 2025

AK, 26 DEC 2024 to 20 FEB 2025

KAKE ONE DEPARTURE (OBSTACLE) (RNAV)

TAKEOFF OBSTACLE NOTES

- Rwy 11: Trees 26' from DER, 250' left of centerline, 148' AGL/345' MSL.
 - Trees beginning 93' from DER, 3' right of centerline, up to 148' AGL/319' MSL.
 - Trees beginning 153' from DER, 16' left of centerline, up to 148' AGL/365' MSL.
 - Trees beginning 281' from DER, 123' left of centerline, up to 148' AGL/385' MSL.
 - Trees beginning 409' from DER, 103' left of centerline, up to 148' AGL/424' MSL.
 - Trees beginning 859' from DER, 210' left of centerline, up to 148' AGL/447' MSL.
 - Trees beginning 987' from DER, 316' left of centerline, up to 148' AGL/470' MSL.
 - Trees beginning 1114' from DER, 2' left of centerline, up to 148' AGL/493' MSL.
 - Trees beginning 1572' from DER, 43' right of centerline, up to 148' AGL/339' MSL.
 - Trees beginning 1895' from DER, 170' right of centerline, up to 148' AGL/345' MSL.
 - Trees beginning 2023' from DER, 64' right of centerline, up to 148' AGL/395' MSL.
 - Trees beginning 2346' from DER, 191' right of centerline, up to 148' AGL/401' MSL.
 - Trees beginning 2473' from DER, 84' right of centerline, up to 148' AGL/431' MSL.
 - Trees beginning 2796' from DER, 211' right of centerline, up to 148' AGL/447' MSL.
 - Trees beginning 2924' from DER, 104' right of centerline, up to 148' AGL/463' MSL.
 - Trees beginning 3119' from DER, 338' right of centerline, up to 148' AGL/467' MSL.
 - Trees beginning 3247' from DER, 231' right of centerline, up to 148' AGL/480' MSL.
 - Trees beginning 3299' from DER, 215' left of centerline, up to 148' AGL/519' MSL.
 - Trees beginning 3375' from DER, 124' right of centerline, up to 148' AGL/486' MSL.
 - Trees beginning 3427' from DER, 7' left of centerline, up to 148' AGL/549' MSL.
 - Trees beginning 3502' from DER, 18' right of centerline, up to 148' AGL/496' MSL.
 - Trees beginning 3698' from DER, 251' right of centerline, up to 148' AGL/503' MSL.
 - Trees beginning 3825' from DER, 145' right of centerline, up to 148' AGL/532' MSL.
 - Trees beginning 3953' from DER, 12' right of centerline, up to 148' AGL/545' MSL.
 - Trees beginning 1 NM from DER, 14' left of centerline, up to 148' AGL/559' MSL.
 - Trees beginning 1 NM from DER, 32' right of centerline, up to 148' AGL/555' MSL.
 - Trees beginning 1.9 NM from DER, 2314' right of centerline, up to 148' AGL/568' MSL.
 - Trees beginning 2.3 NM from DER, 3311' left of centerline, up to 148' AGL/637' MSL.
 - Trees beginning 2.4 NM from DER, 3418' left of centerline, up to 148' AGL/696' MSL.
- Rwy 29: Trees 21' from DER, 353' left of centerline, 148' AGL/280' MSL.
 - Trees beginning 28' from DER, 7' right of centerline, up to 148' AGL/290' MSL.
 - Trees beginning 88' from DER, 13' left of centerline, up to 148' AGL/293' MSL.
 - Trees beginning 1124' from DER, 3' right of centerline, up to 148' AGL/309' MSL.
 - Trees beginning 3316' from DER, 23' right of centerline, up to 148' AGL/316' MSL.
 - Trees beginning 3639' from DER, 44' right of centerline, up to 148' AGL/322' MSL.
 - Trees beginning 3962' from DER, on centerline, up to 148' AGL/336' MSL.
 - Trees beginning 5380' from DER, 233' right of centerline, up to 148' AGL/339' MSL.
 - Trees beginning 5508' from DER, 126' right of centerline, up to 148' AGL/342' MSL.
 - Trees beginning 5635' from DER, 20' right of centerline, up to 148' AGL/352' MSL.
 - Trees beginning 5831' from DER, 40' right of centerline, up to 148' AGL/365' MSL.
 - Trees 5876' from DER, 86' left of centerline, 148' AGL/299' MSL.
 - Tower, trees beginning 1 NM from DER, 65' left of centerline, up to 191' AGL/328' MSL.
 - Trees beginning 1 NM from DER, 1529' right of centerline, up to 148' AGL/391' MSL.
 - Trees beginning 1.1 NM from DER, 1549' right of centerline, up to 148' AGL/414' MSL.
 - Trees beginning 1.2 NM from DER, 2144' right of centerline, up to 148' AGL/437' MSL.
 - Trees beginning 1.3 NM from DER, 2038' right of centerline, up to 148' AGL/486' MSL.
 - Trees beginning 1.4 NM from DER, 1887' right of centerline, up to 148' AGL/542' MSL.
 - Trees beginning 2 NM from DER, 3287' right of centerline, up to 148' AGL/545' MSL.
 - Trees beginning 2.3 NM from DER, 2477' right of centerline, up to 148' AGL/598' MSL.
 - Trees beginning 2.5 NM from DER, 2371' right of centerline, up to 148' AGL/605' MSL.

AK, 26 DEC 2024 to 20 FEB 2025

AK, 26 DEC 2024 to 20 FEB 2025

KAKE ONE DEPARTURE (OBSTACLE) (RNAV)