

WAAS CH 45725 W13A	APP CRS 135°	Rwy Idg TDZE Apt Elev	5500 804 814
--	------------------------	-----------------------------	---

RNAV (GPS) RWY 13

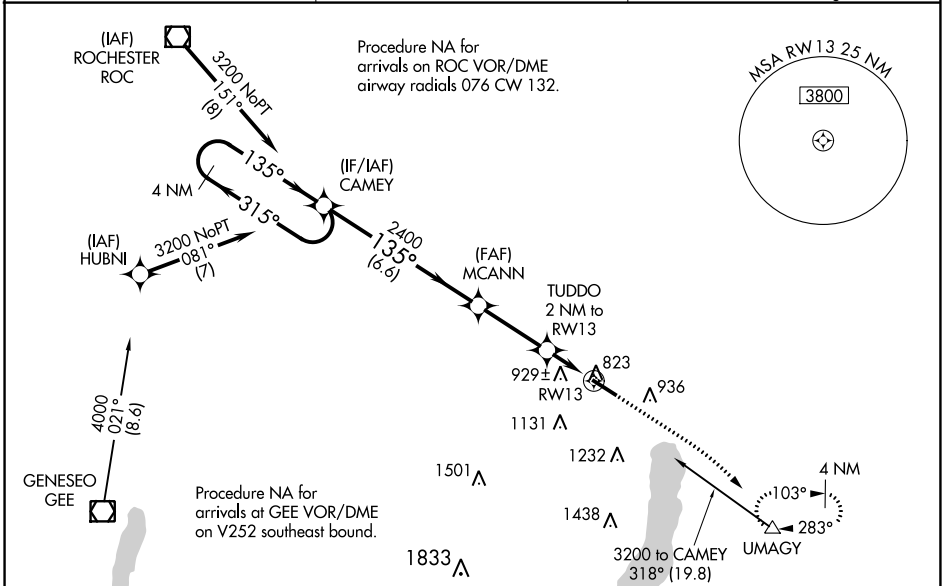
CANANDAIGUA (TUA)

RNP APCH-GPS.

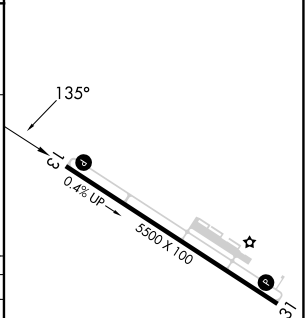
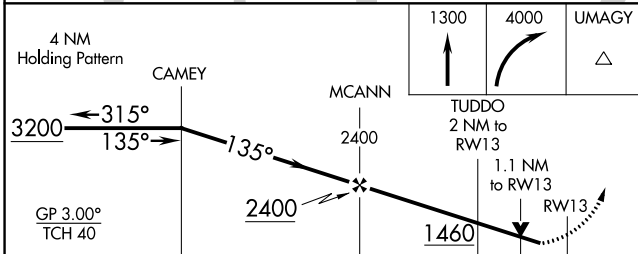
Baro-VNAV and VDP NA when using Rochester altimeter setting. Rwy 13 helicopter visibility reduction below 3/4 SM NA. For uncompensated Baro-VNAV systems, LNAV/VNAV NA below -16°C or above 54°C. When local altimeter setting not received, use Rochester altimeter setting and increase LPV DA to 1138 feet and all visibilities 1/4 SM. Increase LNAV/VNAV DA to 1333 feet and all visibilities 1/8 SM. Increase all MDAs 100 feet and LNAV visibility Cat C 3/8 SM, and Circling visibility Cat C 1/2 SM.

MISSED APPROACH: Climb to 1300 then climbing right turn to 4000 direct UMAGY and hold, continue climb-in-hold to 4000.

AWOS-3P 118.675	ROCHESTER APP CON 119.55 269.6	UNICOM 122.8 (CTAF)
---------------------------	--	-------------------------------



ELEV 814	TDZE 804
----------	----------



CATEGORY	A	B	C	D
LPV DA	1056-3/4	252 (300-3/4)		NA
LNAV/VNAV DA	1251-1 3/8	447 (500-1 3/8)		NA
LNAV MDA	1180-1	376 (400-1)		NA
CIRCLING	1460-1	646 (700-1)	1540-2 726 (800-2)	NA

MIRL Rwy 13-31
REL Rws 13 and 31

NE-2, 26 DEC 2024 to 23 JAN 2025

NE-2, 26 DEC 2024 to 23 JAN 2025