

WAAS CH 40125 W31A	APP CRS 315°	Rwy Idg TDZE Apt Elev	5500 814 814
--	------------------------	-----------------------------	---

RNAV (GPS) RWY 31

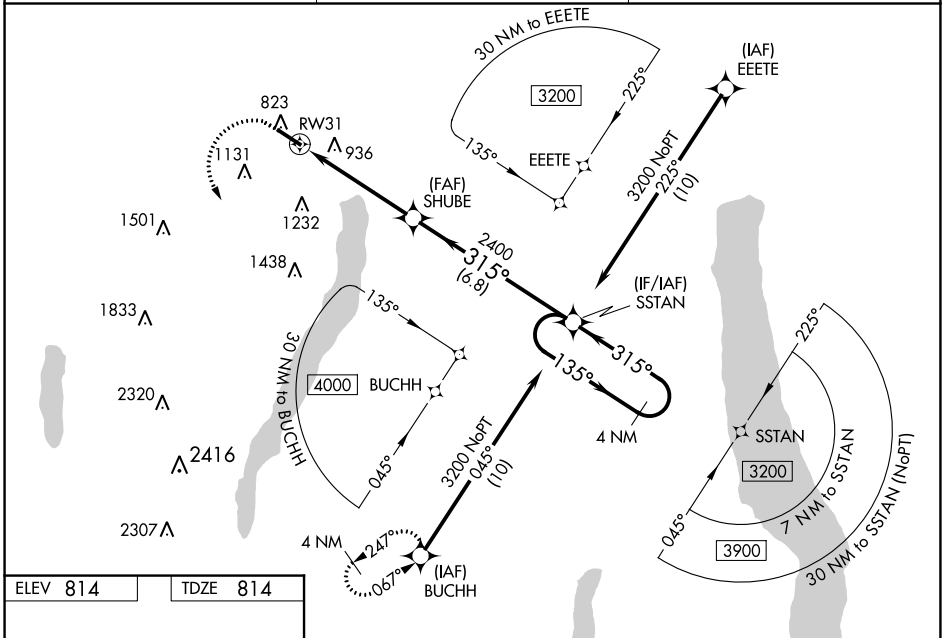
CANANDAIGUA (IUA)

RNP APCH-GPS

NA For uncompensated Baro-VNAV systems, LNAV/VNAV NA below -16°C or above 54°C. When local altimeter setting not received, use Rochester altimeter setting and increase LPV DA to 1146 feet and all visibilities ¼ SM. Increase LNAV/VNAV DA to 1328 feet and all visibilities ½ SM. Increase all MDAs 100 feet and LNAV visibility Cat C ¾ SM, and Circling visibility Cat C ½ SM. Rwy 31 helicopter visibility reduction below ¾ SM NA. Baro-VNAV and VDP NA when using Frederick Douglass/Greater Rochester Intl altimeter setting.

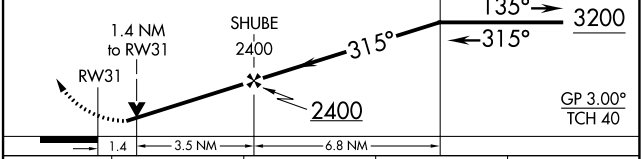
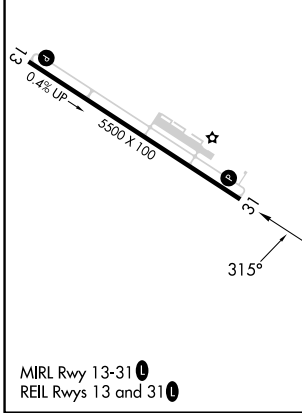
MISSED APPROACH:
Climb to 1400 then climbing left turn to 3700 direct BUCHH and hold.

AWOS-3P 118.675	ROCHESTER APP CON 119.55 269.6	UNICOM 122.8 (CTAF) 1
---------------------------	--	---------------------------------



ELEV 814	TDZE 814
----------	----------

1400	3700	BUCHH	4 NM Holding Pattern
------	------	-------	----------------------



CATEGORY	A	B	C	D
LPV DA	1064-¾	250 (300-¾)		NA
LNAV/VNAV DA	1246-1¼	432 (500-1¼)		NA
LNAV MDA	1300-1	486 (500-1)	1300-1¾ 486 (500-1¾)	NA
C CIRCLING	1460-1	646 (700-1)	1540-2 726 (800-2)	NA

NE-2, 26 DEC 2024 to 23 JAN 2025

NE-2, 26 DEC 2024 to 23 JAN 2025