

LOC I-CPF <b>109.35</b>	APP CRS <b>145°</b>	Rwy Idg <b>5499</b> TDZE <b>1243</b> Apt Elev <b>1256</b>
----------------------------	------------------------	---

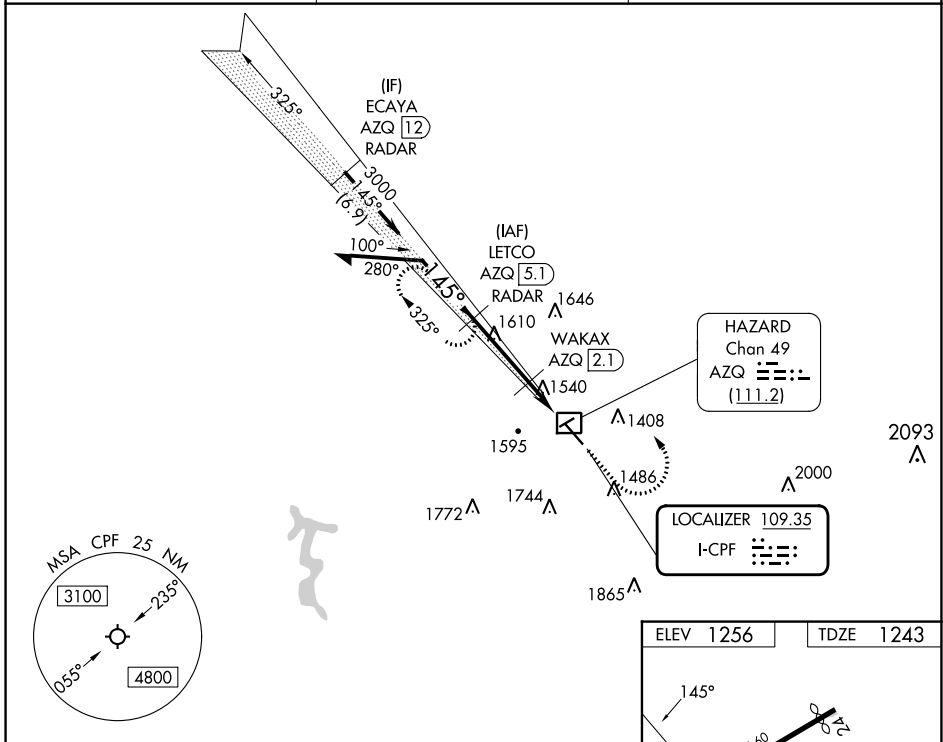
**LOC RWY 14**  
WENDELL H FORD (CPF)

DME required. RADAR required for procedure entry.  
RADAR required for missed approach.

⚠ Circling Rwy 24, 32 NA at night. Simultaneous reception of I-CPF and AZQ DME required. Rwy 14 helicopter visibility reduction below 3/4 SM NA.  
DME from AZQ DME.

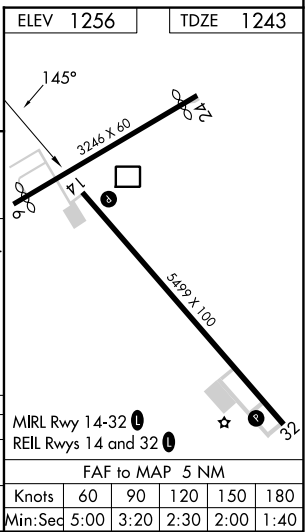
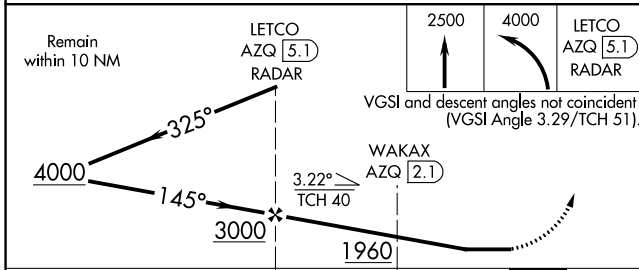
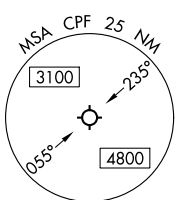
MISSED APPROACH: Climb to 2500 then climbing left turn to 4000 to LETCO/AZQ 5.1 DME/RADAR and hold, continue climb-in-hold to 4000.

AWOS-3 <b>119.025</b>	INDIANAPOLIS CENTER <b>126.575 257.85</b>	UNICOM <b>122.7 (CTAF) 0</b>
--------------------------	--	---------------------------------



SE-1, 26 DEC 2024 to 23 JAN 2025

SE-1, 26 DEC 2024 to 23 JAN 2025



CATEGORY	A	B	C	D
S-LOC 14	1800-1	557 (600-1)	1800-1½	557 (600-1½)
ⓐ CIRCLING	2000-1 744 (800-1)	2040-1 784 (800-1)	2060-2¼ 804 (900-2¼)	2140-3 884 (900-3)