

|  |                        |   |   |
|--|------------------------|---|---|
| WAAS<br>CH <b>56444</b><br><b>W32A</b> | APP CRS<br><b>321°</b> | Rwy Idg<br>TDZE <b>284</b><br>Apt Elev <b>284</b> | <b>3095</b><br><b>284</b><br><b>284</b> |
|--|------------------------|---|---|

# RNAV (GPS) RWY 32

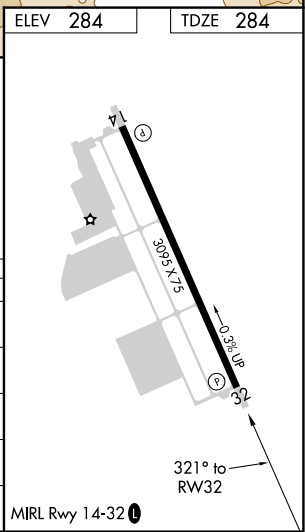
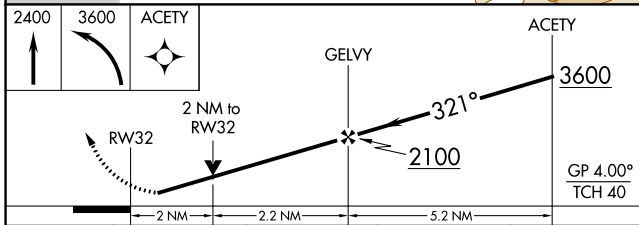
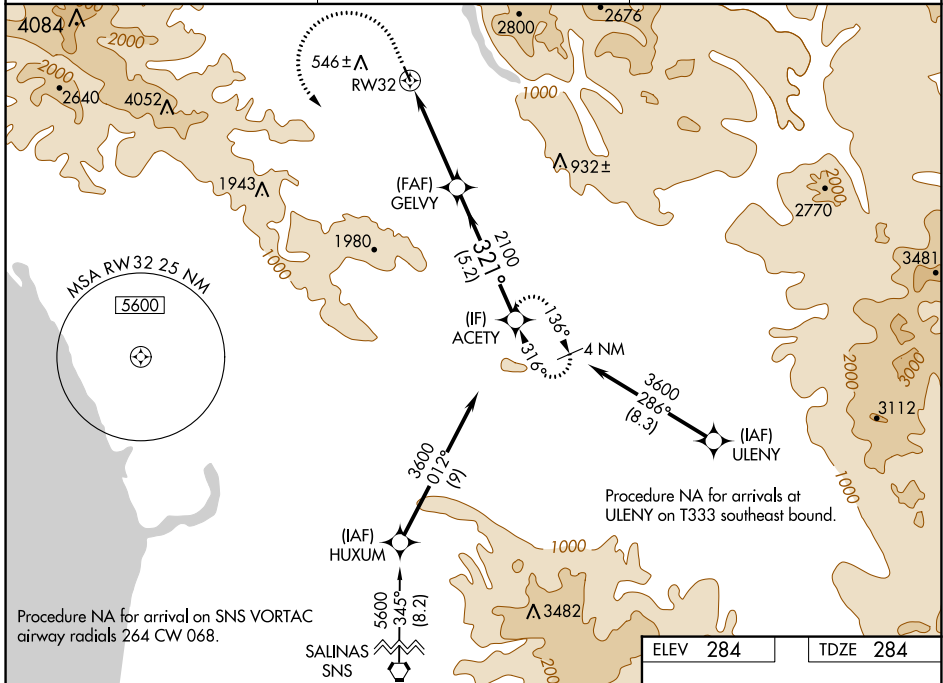
SAN MARTIN (E16)

RNP APCH - GPS.

**⚠** Circling NA southwest of Rwy 14-32. Rwy 32 helicopter visibility reduction below  $\frac{3}{4}$  SM NA.

MISSED APPROACH: Climb to 2400 then climbing left turn to 3600 direct ACETY and hold.  
\*Missed approach requires minimum climb of 260 feet per NM to 2400.

|                          |  |                                 |
|--------------------------|--|---------------------------------|
| AWOS-3P<br><b>118.35</b> | NORCAL APP CON<br><b>124.525 348.675</b> | UNICOM<br><b>122.7 (CTAF) 0</b> |
|--------------------------|--|---------------------------------|



| CATEGORY          | A  | B  | C | D  |
|-------------------|--|--|---|----|
| LPV DA*           | 600- $\frac{7}{8}$                                   | 316 (400- $\frac{7}{8}$ )                            |   | NA |
| LPV DA            | 954-1 $\frac{7}{8}$                                  | 670 (700-1 $\frac{7}{8}$ )                           |   | NA |
| LNAV MDA*         | 1060-1<br>776 (800-1)                                | 1060-1 $\frac{1}{4}$<br>776 (800-1 $\frac{1}{4}$ )   |   | NA |
| LNAV MDA          | 1320-1 $\frac{1}{4}$<br>1036 (1100-1 $\frac{1}{4}$ ) | 1320-1 $\frac{1}{2}$<br>1036 (1100-1 $\frac{1}{2}$ ) |   | NA |
| <b>C</b> CIRCLING | 1320-1 $\frac{1}{4}$<br>1036 (1100-1 $\frac{1}{4}$ ) | 1320-1 $\frac{1}{2}$<br>1036 (1100-1 $\frac{1}{2}$ ) |   | NA |

SW-2, 26 DEC 2024 to 23 JAN 2025

SW-2, 26 DEC 2024 to 23 JAN 2025