

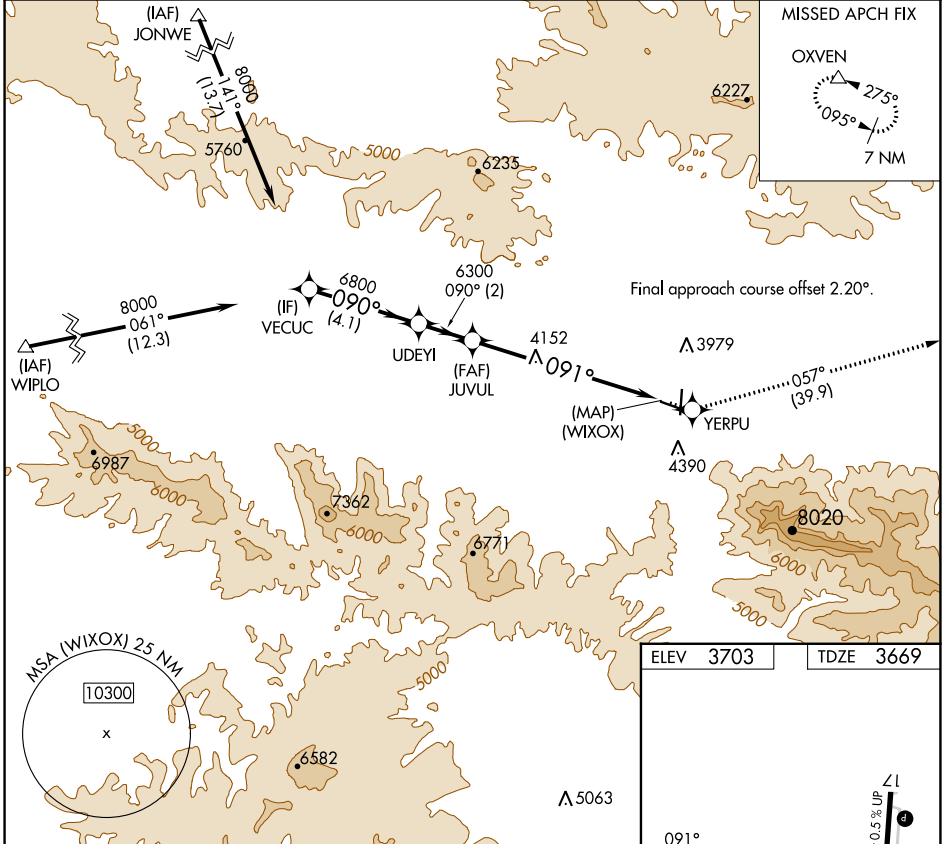
WAAS CH <b>73010</b> <b>W09A</b>	APP CRS <b>091°</b>	Rwy Idg <b>4100</b> TDZE <b>3669</b> Apt Elev <b>3703</b>
--	------------------------	---

# RNAV (GPS) Z RWY 9

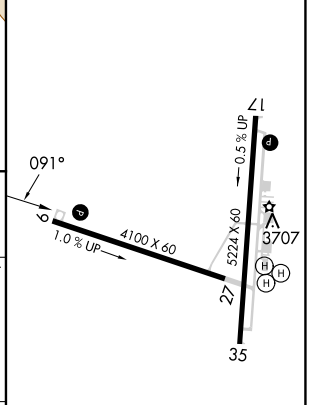
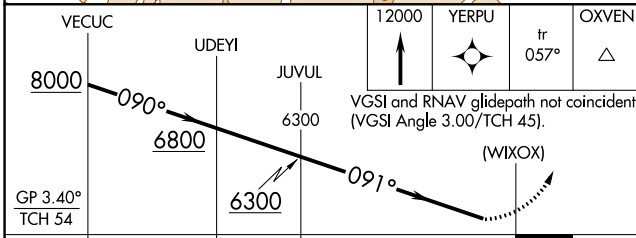
GRANT COUNTY RGNL/OGLIVIE FLD (GCD)

RNP APCH - GPS.	MISSED APPROACH: Climb to 12000 direct YERPU and on track 057° to OXVEN and hold, continue climb-in-hold to 12000.
When local altimeter setting not received, procedure NA. Rwy 9 helicopter visibility reduction below 3/4 SM NA.	

AWOS-3 <b>118.375</b>	SEATTLE CENTER <b>128.15 257.75</b>	UNICOM <b>122.8 (CTAF) 0</b>
--------------------------	--	---------------------------------



ELEV 3703	TDZE 3669
-----------	-----------



CATEGORY	A	B	C	D
LPV DA	4269-2	600 (600-2)		NA

REIL Rws 17 and 9 0  
MRL Rws 9-27 and 17-35 0

NW-1, 26 DEC 2024 to 23 JAN 2025

NW-1, 26 DEC 2024 to 23 JAN 2025