

WAAS CH 90526 W21A	APP CRS 207°	Rwy Idg TDZE 537 Apt Elev 537	5003
--	------------------------	---	-------------

RNAV (GPS) RWY 21

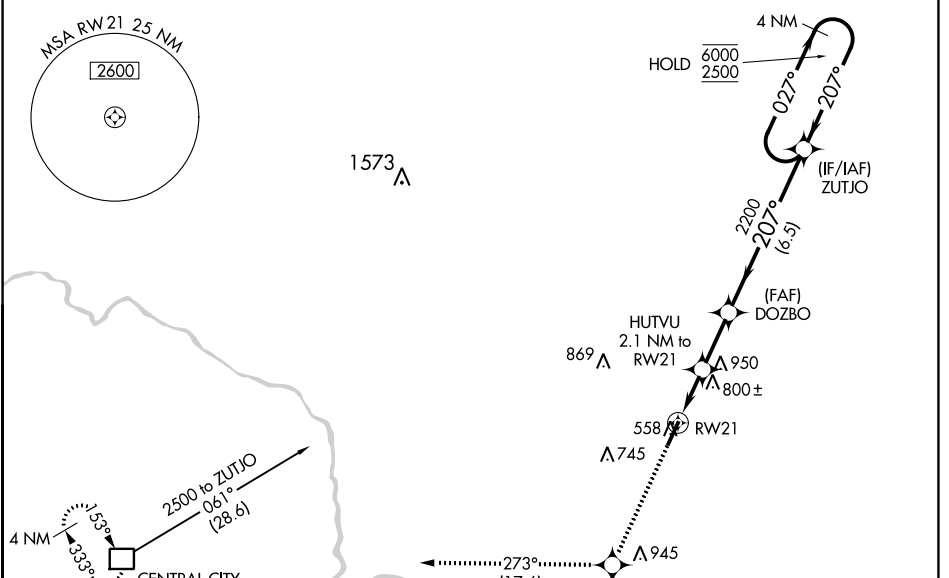
OHIO COUNTY (JQD)

RNP APCH - GPS.

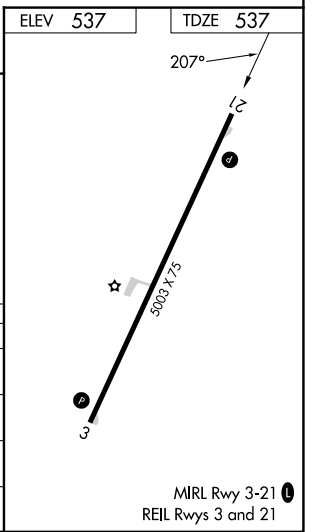
Baro-VNAV NA when using Owensboro altimeter setting. For uncompensated Baro-VNAV systems, LNAV/VNAV NA below -16°C or above 54°C. When local altimeter setting not received, use Owensboro altimeter setting and increase LPV DA to 858 feet, increase LNAV/VNAV DA to 1082 feet. Increase all MDA 80 feet, increase LNAV/VNAV visibilities all Cats ¼ SM, increase LNAV and Circling Cat C visibility ¼ SM. Rwy 21 helicopter visibility reduction below 1 SM NA. Procedure NA at night.

MISSED APPROACH: Climb to 3000 direct VUSWO and on track 273° to CCT DME and hold.

AWOS-3PT 132.1	EVANSVILLE APP CON ★ 124.025 290.9	UNICOM 122.8 (CTAF) ①
--------------------------	--	---------------------------------



3000	VUSWO	CCT	DOZBO		ZUTJO	4 NM Holding Pattern
↑	⬠	tr 273°	HUTVU 2.1 NM to RWY 21	2200	2200	6000 / 2500
*LNAV only.			*1360	207°	027°	GP 3.50° TCH 47
	RWY 21		2.1 NM	2.3 NM	6.5 NM	
CATEGORY	A	B	C	D		
LPV DA	787-1	250 (300-1)	807-1 270 (300-1)	NA		
LNAV/VNAV DA	1011-1 3/8		474 (500-1 3/8)	NA		
LNAV MDA	1060-1	523 (600-1)	1060-1 1/2 523 (600-1 1/2)	NA		
CIRCLING	1060-1 523 (600-1)	1100-1 563 (600-1)	1300-2 1/4 763 (800-2 1/4)	NA		



SE-1, 26 DEC 2024 to 23 JAN 2025

SE-1, 26 DEC 2024 to 23 JAN 2025