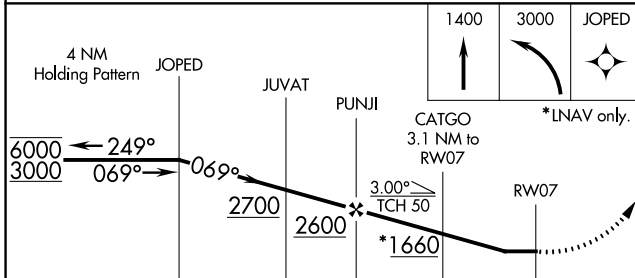
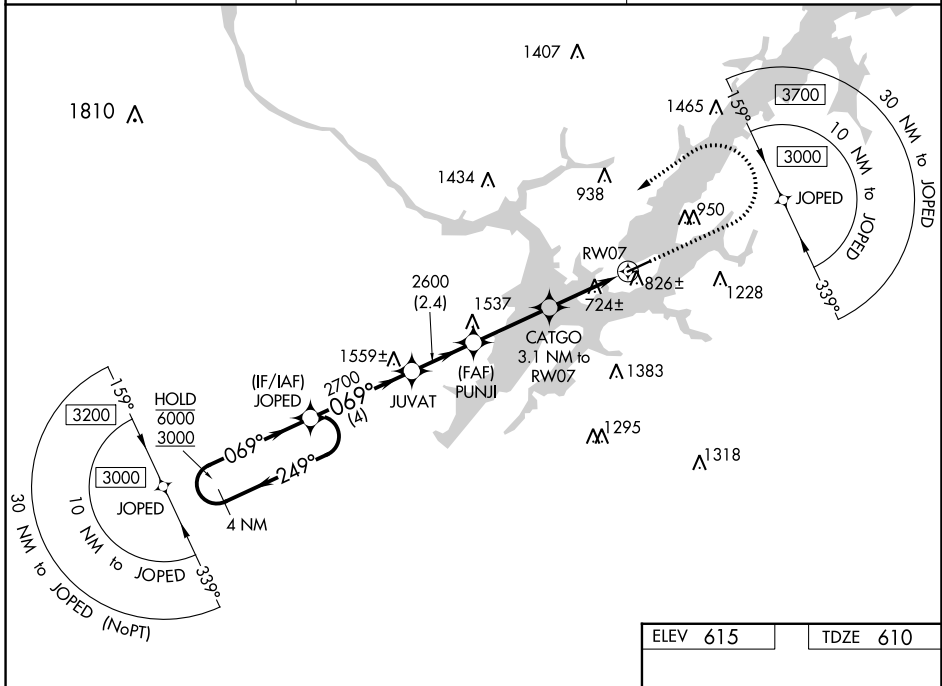


WAAS CH 90340 W07A	APP CRS 069°	Rwy Idg 5005 TDZE 610 Apt Elev 615
--	------------------------	---

RNAV (GPS) RWY 7

GUNTERSVILLE MUNI/JOE STARNES FLD (8A.1)

RNP APCH.		MISSED APPROACH: Climb to 1400 then climbing left turn to 3000 direct JOPED and hold.
<p>▼ NA</p> <p>▲ NA</p> <p>Circling NA to Rws 6 and 24. Rwy 7 helicopter visibility reduction below 1 SM NA. Use Scottsboro altimeter setting. Straight-in Rwy 7 NA at night, Circling Rwy 7 NA at night.</p>	4A6 AWOS-3PT 120.125	HUNTSVILLE APP CON ★ 125.6 354.1
		UNICOM 122.8 (CTAF) 0



ELEV 615	TDZE 610			
<p>4 NM Holding Pattern JOVED</p> <p>6000 ← 249°</p> <p>3000 → 069°</p> <p>069°</p> <p>2700</p> <p>2600</p> <p>3.00° TCH 50</p> <p>*1660</p> <p>CATGO 3.1 NM to RW07</p> <p>RW07</p> <p>5005 X 75</p> <p>5500 X 200</p> <p>25</p> <p>069° to RW07</p> <p>*LNAV only.</p>				
CATEGORY	A	B	C	D
LP MDA	1040-1	430 (500-1)	1040-1¼	430 (500-1¼)
LNAV MDA	1140-1	530 (600-1)	1140-1½	530 (600-1½)
CIRCLING	1360-1 745 (800-1)	1380-1 765 (800-1)	1620-3 1005 (1100-3)	1840-3 1225 (1300-3)
REL Rwy 7 and 25 0				
MRL Rwy 7-25 0				

SE-4, 26 DEC 2024 to 23 JAN 2025

SE-4, 26 DEC 2024 to 23 JAN 2025